



ENDOSCOPY SYSTEMS & THERAPEUTIC DEVICES

ENDOSOLUTIONS FOR GI

FROM
SCREENING TO
TREATMENT

FUJIFILM
Value from Innovation

COMPANY

Unchanging Values	4
Developing Technologies	6
Experiencing Endoscopy	18
Daily Endoscopy Practice	20

PRODUCTS

Endoscopy Systems	22
Light Sources & Processors	48
ESD	52
Polypectomy	64
Biopsy	81
Foreign Body	83
Haemostasis & Ligation	89
Dilation	93
Guide Wires	95
Balloon Enteroscopy	98
Accessories	102
Monitors, Printers & Carts	112

SERVICE

Service & Partnership	117
Training & Education	119
Product Recommendations	121



DEDICATED TO **PATIENTS' QUALITY OF LIFE**



THE UNCHANGING VALUES OF THE FUJIFILM GROUP

We will use leading-edge, proprietary technologies to provide top-quality products and services that contribute to the advancement of culture, science, technology and industry, as well as improved health and environmental protection in society.

Our overarching aim is to improve the quality of life of patients worldwide through early detection and successful treatment of disease.

HEALTHCARE

As a total healthcare company, we are involved in the development of a wide range of businesses in the three areas of prevention, diagnosis, and treatment. We are contributing to the health of people around the world by responding to unmet medical needs, early detection of diseases, and support for the development and manufacture of innovative vaccines and pharmaceuticals.

Our clinically proven products and technologies are continuously being refined to make the work of health professionals more effective and efficient.

At Fujifilm we are constantly innovating and creating new solutions that address the practical needs of our global customers in various business fields including healthcare, graphics systems, optical devices, recording media and photographic technologies.

Every year we invest around seven percent of our consolidated turnover in research and development which includes dedicated research and the nurturing of close working relationships with international specialists. This ensures that we not only meet high-quality requirements but also contribute to the advancement of culture, science, industry, and technology as well as improved health and environmental protection in society.

The focus at Fujifilm is firmly on holistic patient care which means that our service portfolio includes expert technical assistance, a comprehensive range of hygiene products and individual consulting.

We have expanded our business globally, in order to support patients and medical service providers with rapid, precise diagnosis and efficient treatment.

Today, Fujifilm operates in around 50 group companies and branches in Europe, employing over 4,500 people engaged in R&D, manufacturing, sales, and service support.



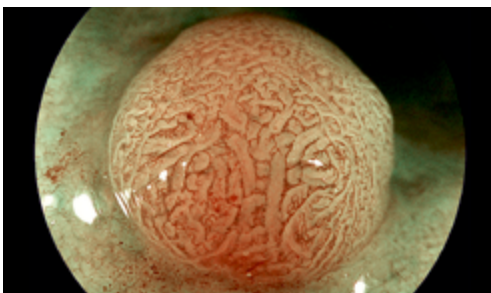


DEVELOPING TECHNOLOGIES BEYOND THE EXPECTED



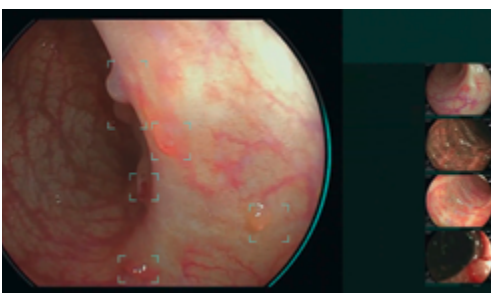
ADVANCED TECHNOLOGIES, EXCELLENT POSSIBILITIES

Fujifilm has been developing image processing technologies for many years. Excellent image capture and advanced data processing further improve technology in our endoscopy portfolio.



BLI & Zoom

The Multi Light technology, for example, uses distinct light wavelengths to support lesion detection and characterisation by high-contrasting LCI and BLI images.



LCI & CAD EYE

Fujifilm continues to develop imaging solutions: One particular focus has been the development of AI-driven smart technologies for the radiology field as well as medical ultrasound and, more recently, endoscopy: CAD EYE.

CAD EYE is intended to make procedures more efficient by improving polyp detection and characterisation rates.

SELECTION OF OUR TECHNOLOGIES



Multi Light TECHNOLOGY

Illumination suitable for observation using variable LED light intensity.



WATER JET TECHNOLOGY

The Water Jet function supports constant visualisation for both diagnostic and therapeutic procedures.



LCI TECHNOLOGY

Increased contrast in red colour leads to improved visibility of abnormalities, inflammation and delineation.



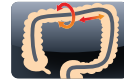
COLOASSIST TECHNOLOGY

Flexible adjustment to be expected for easier insertion in addition to advanced force transmission and adaptive bending.



BLI TECHNOLOGY

The combination of special light wavelengths results in improved contrast imaging for characterisation.



ADVANCED FORCE TRANSMISSION is expected to improve manoeuvrability, especially in more challenging anatomies.



CAD EYE

This function, developed utilising AI technology, supports colonic polyp detection and characterisation during colonoscopy.



DICOM TECHNOLOGY

The goal of the DICOM Standard is to achieve compatibility and improve workflow efficiency between imaging systems and other information systems.



SCALE EYE

Virtual scale function designed to aid endoscopists in estimating the size of lesions in the colon.



Multi Zoom TECHNOLOGY

Easy-to-control optical magnification in stepwise or continuous magnification mode.



COLOASSIST PRO

Endoscope visualisation function which displays the configuration of the endoscope in real-time.



ANTI-BLUR FUNCTION

The clearest image among multiple images is automatically selected.



CMOS TECHNOLOGY

Brilliant image transmission with reduced noise thanks to a CMOS-chip positioned directly in the tip.



Close Focus

Observation up to 2 mm supports diagnosis of the disease.



FICE TECHNOLOGY

Provides the possibility to enhance slight colour differences such as vascular and mucosal patterns without tissue staining. The procedure digitally selects three wavelengths of light and displays reconstructed images.



HD TECHNOLOGY

Combine equipment displaying this logo to ensure that you view HDTV images on your monitor.



SUPER CCD TECHNOLOGY

The Super CCD and high-performance optical system provides high-quality images.



SEE MORE. DETECT MORE. MULTI LIGHT TECHNOLOGY.



Achieving improved diagnostic and therapeutic results in endoscopic procedures is highly dependent on image quality. As one of the world's largest imaging companies, our long-standing experience in medical imaging has allowed Fujifilm's engineers to develop Multi Light technology, fulfilling the need for improved visualisation in endoscopy – today and in the future. This illumination system meets the high brightness and contrast standards enabling the observation modes LCI and BLI. Specifically designed for this illumination system, the ELUXEO 700 series of endoscopes provides detailed high-resolution imaging for both diagnosis and pre-therapeutic assessment.

IMPROVED ILLUMINATION USING VARIABLE LED LIGHT INTENSITY

Integrated Light Source

Mucosa
Submucosa

BLI (Blue Light Imaging)

White Light

..... Haemoglobin absorption
— BLI Spectrum Profile
Short wavelength light around 410 nm is absorbed by haemoglobin more strongly

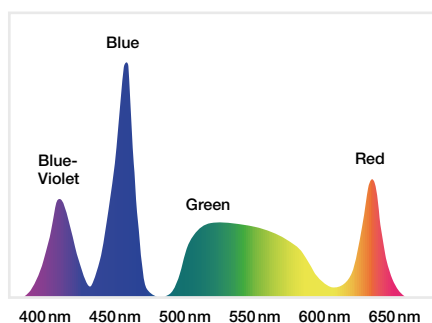
400 500 600 700 (nm)

- A high-performance spectrum of light is generated from a powerful light source with four individual LED light bulbs.
- Enhanced visualisation of haemoglobin, and thus blood vessels, is generated by the high peak intensity of short-wavelength light (blue-violet and blue).
- Specific light spectrum settings targeting the mucosal layers result in improved contrast and higher definition of imaging.

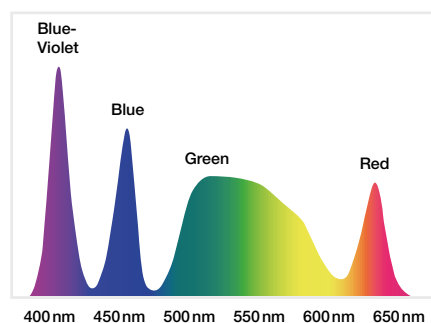
This drawing is for illustration purposes only and not a complete representation.

High-intensity illumination based on Multi Light technology creates high-quality images with White Light Imaging and the observation modes LCI and BLI. With the involvement of numerous clinical experts, the ideal composition of four LEDs for each observation mode has been developed to achieve excellent results in illumination. With a simple push of a button, you can easily switch between the following observation modes:

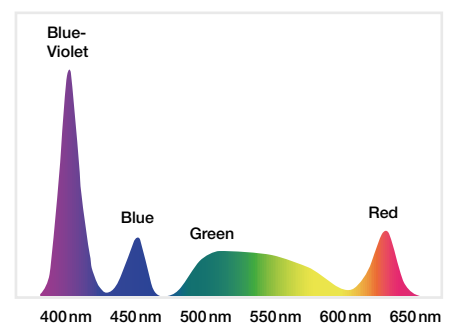
WHITE LIGHT IMAGING



LCI MODE

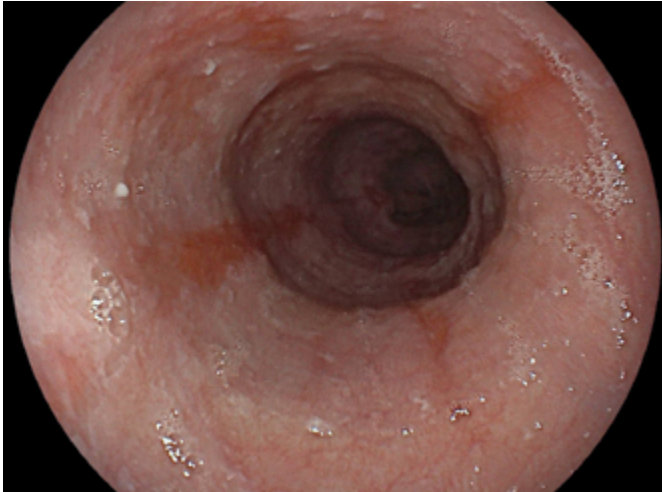


BLI MODE

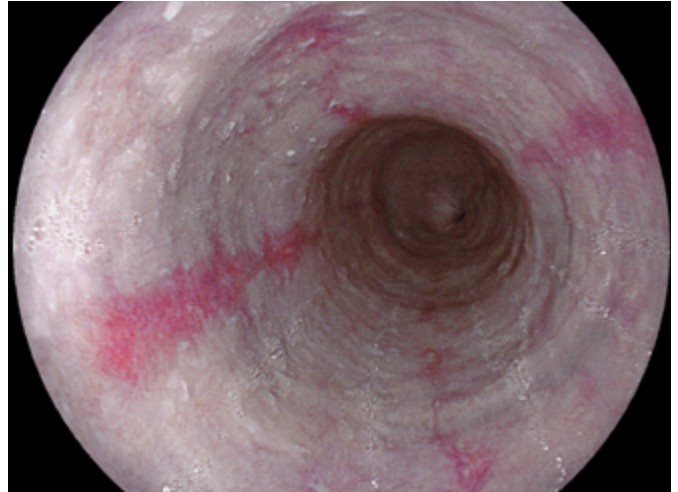


LCI (LINKED COLOR IMAGING) MODE

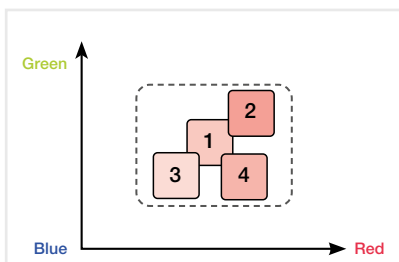
LCI differentiates the red colour spectrum more effectively than White Light Imaging thanks to its preprocess composition of light spectrum and advanced signal processing. The increased colour contrast in red colour leads to improved visibility of abnormalities, inflammation and delineation.



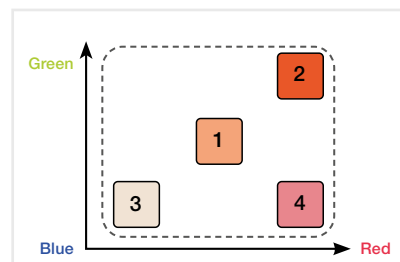
Oesophagus – White Light Imaging



Oesophagus – LCI Mode



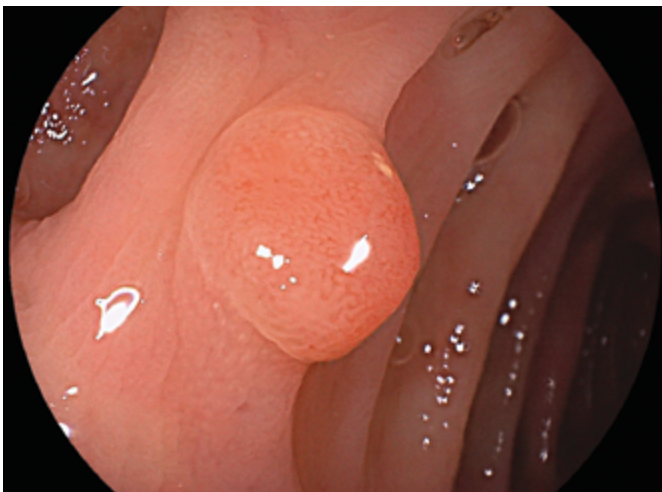
WITHOUT LCI



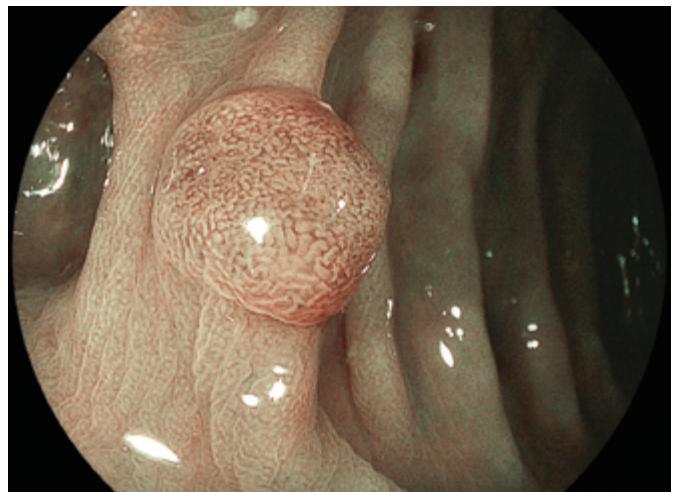
WITH LCI

BLI (BLUE LIGHT IMAGING) MODE

High-intensity contrast imaging with BLI is expected to be helpful for improved visualisation of superficial vascular and mucosal patterns. Focussing on the characteristics of short wavelength absorption of haemoglobin (at 410nm) combined with specific white light spectral colours results in improved contrast imaging.



Colon – White Light Imaging



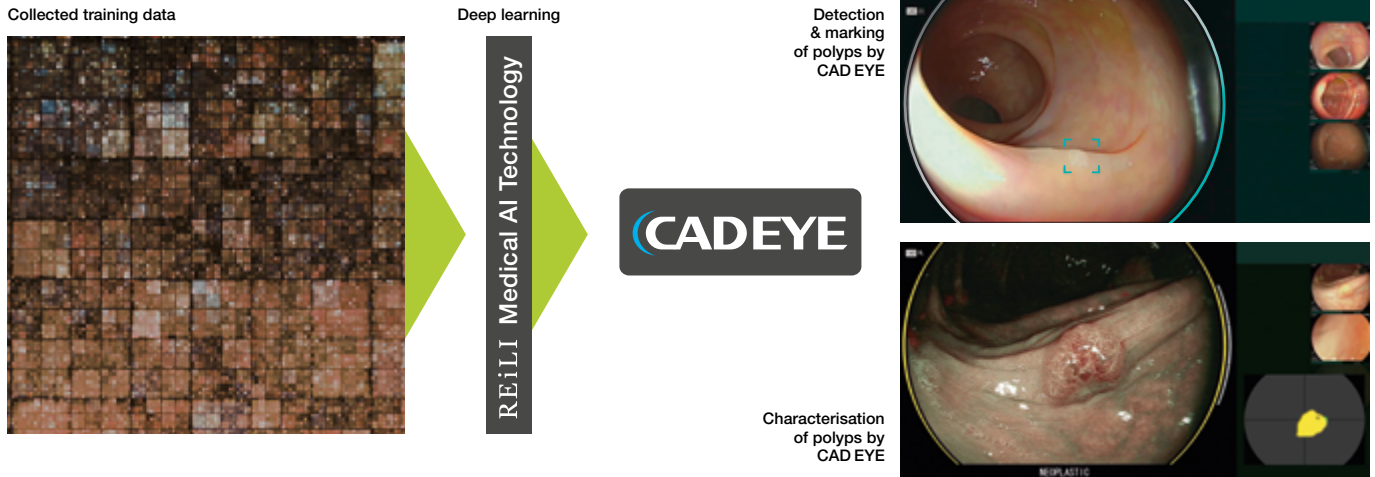
Colon – BLI Mode



CAD EYE – ARTIFICIAL INTELLIGENCE

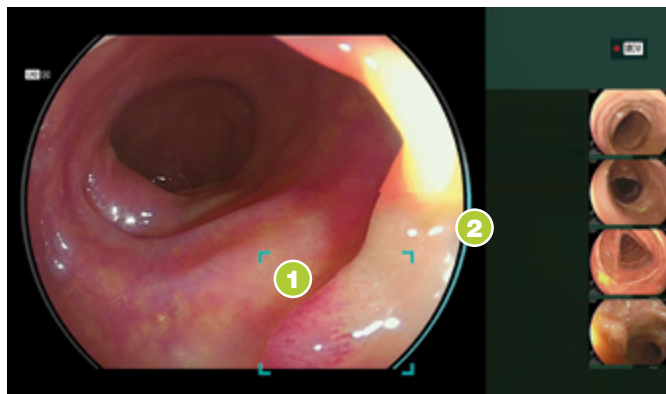
DETECTION AND CHARACTERISATION SUPPORT IN THE COLON

CAD EYE has been developed utilising AI deep learning technology. It has been trained with a powerful supercomputer located in Fujifilm’s global AI technology centre in Tokyo, utilising an immense amount of clinical images using Fujifilm endoscopy systems. As a result, CAD EYE is a customised detection and characterisation support compatible with the ELUXEO system.






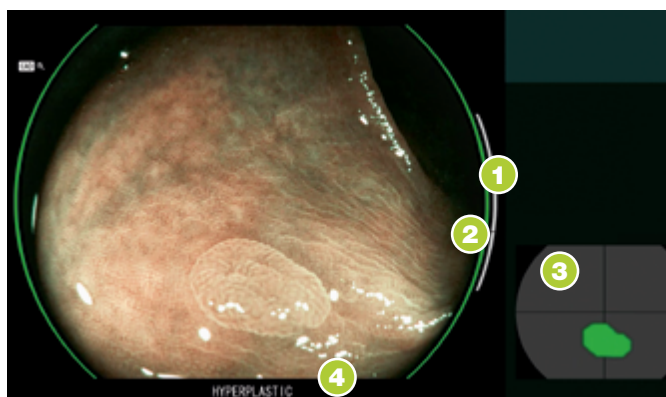
USER-FRIENDLY INTERFACE

The development of the interface has been designed to enable comfortable procedures. It does not interfere with clinical images and minimises required eye movement. Its display is designed to be simple and intuitive for excellent support during long hours in the examination room.






Detection

- 1  **Detection box**
Displays the area where the suspicious polyp is detected. Different sizes of the Detection Box are available.
- 2  **Visual assist circle**
Lights up in the direction where the suspicious polyp is detected.
-  **Detection sound**
Sound signal when a suspicious polyp is detected. Volume can be defined for each user.



Characterisation

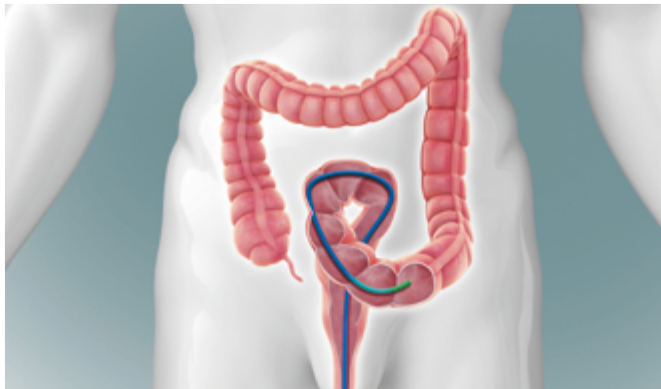
- 1  **Status bar**
Indicates the status of characterisation analysis regarding the suspicious area.
- 2  **Visual Assist Circle**
GREEN: Characterisation HYPERPLASTIC
YELLOW: Characterisation NEOPLASTIC
- 3  **Position map**
Indicates the position of the suspicious area, this software is characterising.
- 4 **Characterisation result**
HYPERPLASTIC: hyperplastic polyps & SSL
NEOPLASTIC: adenoma and cancer

COLOASSIST PRO – REAL-TIME VISUALISATION

Taking into account that the structure, mobility and anatomical complexity of the colon varies with each individual, the insertion of the endoscope into the colon requires a high level of technical expertise. Fujifilm's Endoscope Visualisation System displays the configuration of the endoscope in real-time by reproducing a coloured graphical representation of the endoscope next to endoscopic view*.

HOW THE VISUALISATION SYSTEM WORKS

Coils within the Transceiver Dish generate an electromagnetic field that is received by coils integrated within the length of the dedicated ELUXEO EC-760S-G/L, M colonoscope and within the Hand Marker. This electromagnetic field is used to determine the position of the coils in the endoscope. The current position of the Hand Marker is displayed on the endoscope shape visualisation screen which can be used to refer to the endoscope's location within the patient.



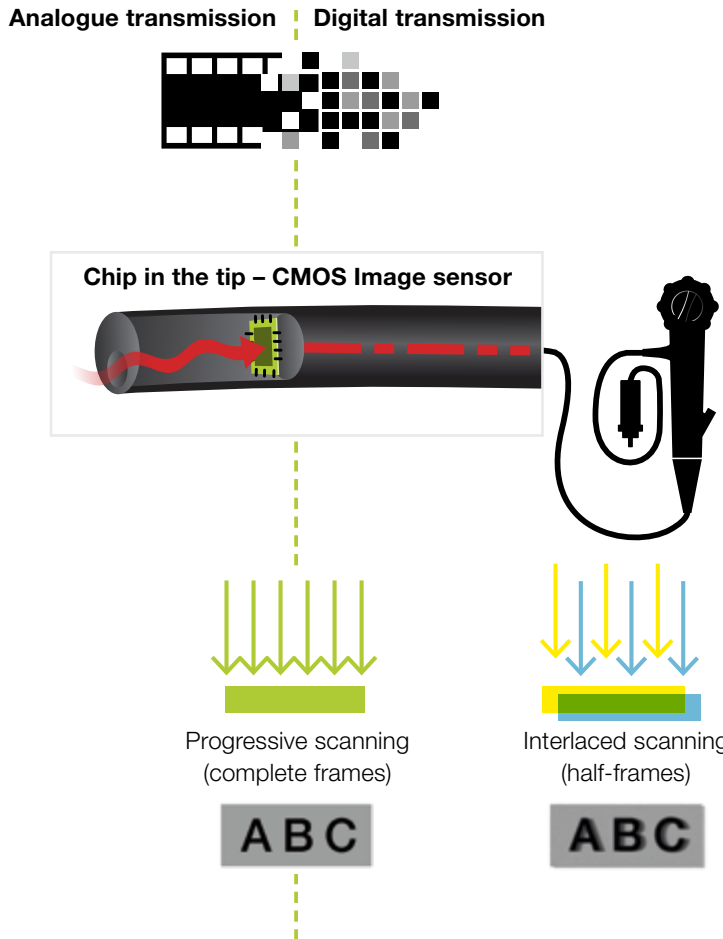
* The endoscope shape is to be displayed on the monitor for VP-7000 by using the PoP function



CMOS TECHNOLOGY WITH MEGAPIXEL

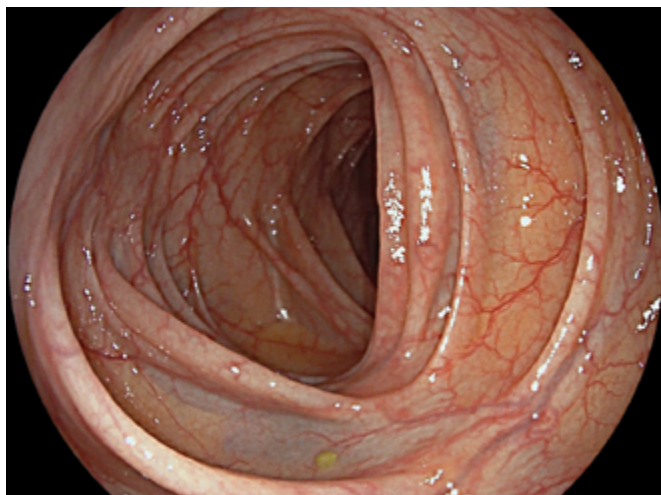


With the CMOS chip built directly into the tip of the endoscope, the signal is digitally transmitted through the device, thus providing high-resolution imaging. All 760, 720 and 600 endoscopes are equipped with CMOS.



The CMOS chip is positioned directly in the tip of the endoscope and transforms the analogue signal into a digital signal at the site of examination. This ensures **brilliant image transmission with reduced noise**.

CMOS technology supports 60 frame progressive scanning technology where complete images are processed, rather than half-frames processed when using the interlaced scanning method. The result is a high-resolution image and smooth moving images with reduced blurring.



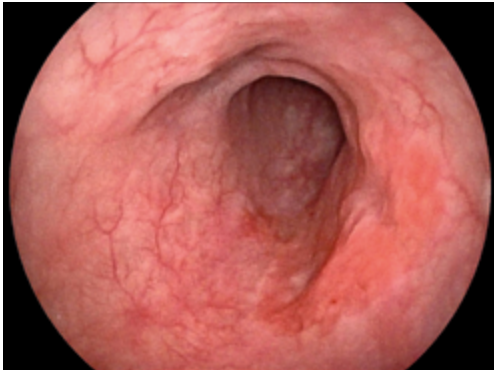
Colon in super high resolution

This drawing is for illustration only and not a complete representation.



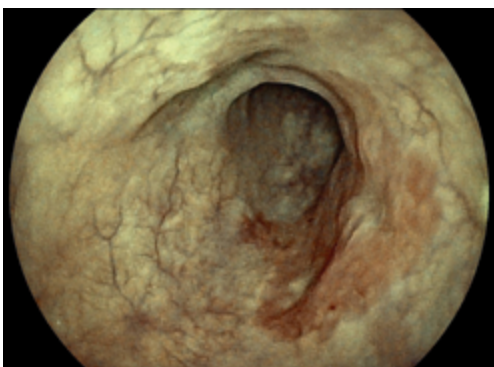
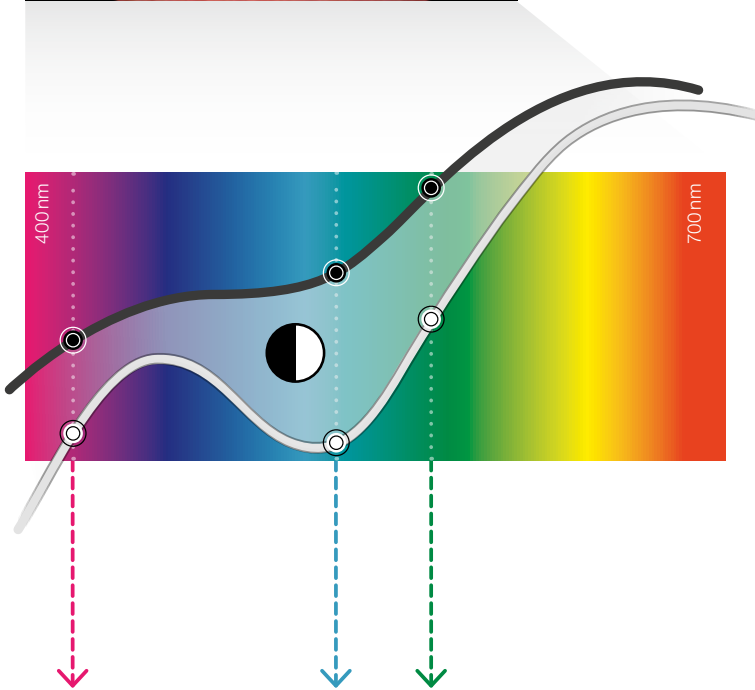
Better visibility for detection and diagnosis

FICE – Flexible Spectral Imaging Colour Enhancement – enhances colour differences such as vascular and mucosal patterns without the need for tissue staining. The procedure digitally selects three wavelengths of the light and displays the reconstructed images. The endoscope switch allows physicians to change between the conventional image and the FICE image in a split second, ensuring an uninterrupted examination with the eyes always concentrated on the monitor.



XENON endoscopy White Light image

Nearly all of the red wavelength is reflected.



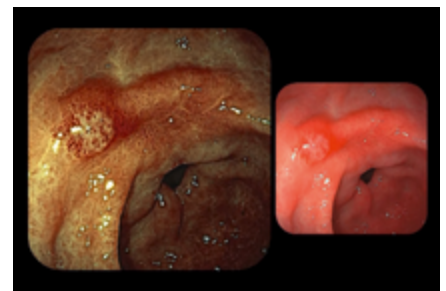
FICE (Flexible Spectral Imaging Colour Enhancement)

The contrast is enhanced and the vascular pattern is highlighted by focusing on the difference in wavelength reflection of mucosa and blood vessels.

DUAL MODE

Simultaneously displays a FICE image and a White Light image on the same monitor

A dual view of a FICE image and a White Light image on the same monitor allows you to collect more information for examination and diagnosis.





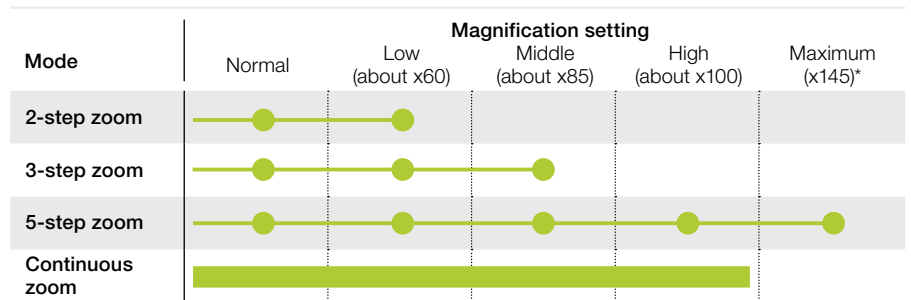
MULTI ZOOM

Optical zoom for precise focusing

Fujifilm's latest Multi Zoom technology enables programming of up to three magnification modes to realise an easy-to-control endoscopic zoom (stepwise or continuous magnification mode).

- 2-step zoom
- 3-step zoom
- 5-step zoom

The optical zoom allows a close examination of the mucosa tissue and capillary structures in combination with excellent focusing and orientation during magnification throughout the wide focal plane.



E-ZOOM

Electronic zoom provides better visibility

E-Zoom images can be provided by pressing the endoscope button once. Normally, E-Zoom increases the noise in an image. The E-Zoom function can be used with the 600 series to produce a FICE image with less noise so that it is possible to observe the surface pattern detail as well as the vascular pattern.

* In combination with 26" screen.

COLOASSIST ADJUST

Specifically developed for the 760 series colonoscopes

ColoAssist Adjust features the Flexibility Adjuster with different levels of stiffness as well as Advanced Force Transmission and Adaptive Bending, expected to be helpful for manoeuvrability.

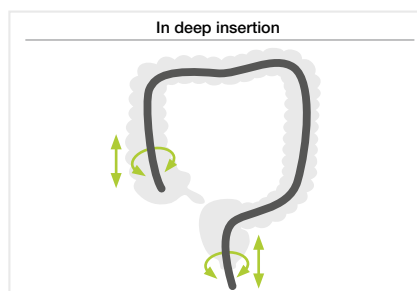
FLEXIBILITY ADJUSTER

The stiffness of the flexible portion of the colonoscope can be easily adjusted according to your preference by turning the flexibility adjustment ring (level 0 to 3). This is expected to be helpful during intubation when passing segments such as the sigmoid colon and the transverse colon, leading the endoscope to follow the intestinal tract more smoothly.



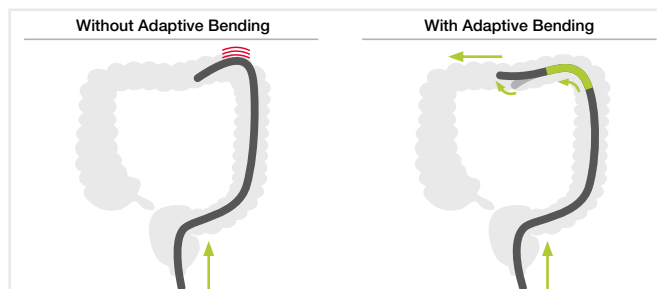
ADVANCED FORCE TRANSMISSION

The flexible portion is designed to transmit the pushing, pulling and rotating movements from the hand to the distal end of the endoscope. It is intended to be helpful for manoeuvrability inside the digestive tract.



ADAPTIVE BENDING

The end of the bending section is soft, allowing the endoscope to bend easily. The flexible bending section has been designed to return more easily to its straight form after passing through the tight curves of the colon.

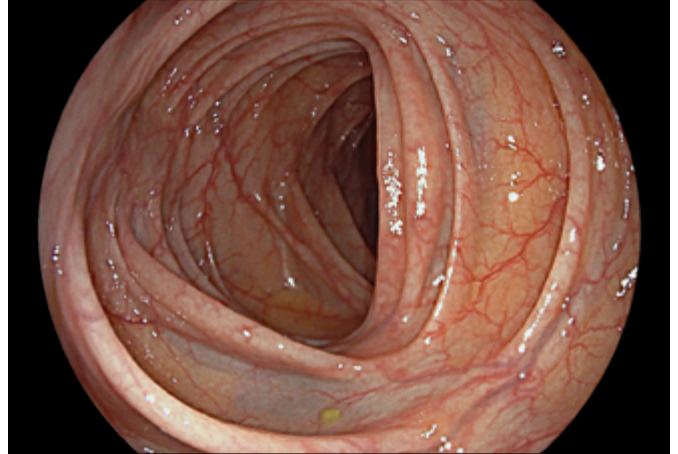
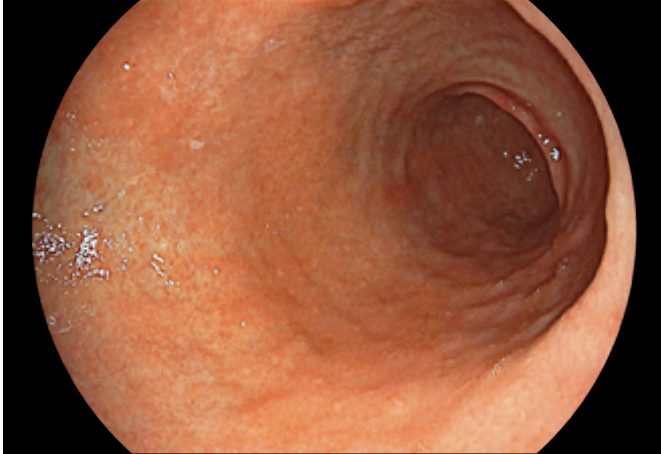




OVER MEGAPIXEL CMOS IMAGE SENSOR



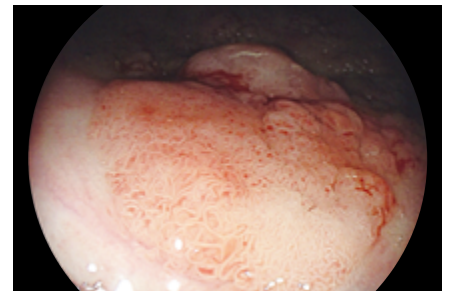
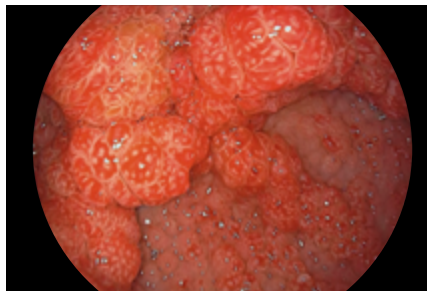
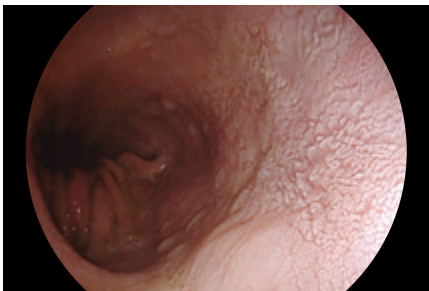
With Over Megapixel CMOS image sensor, 760, 720 and 600 series endoscopes produce high-resolution images, while the CMOS technology realises less noise and brilliant images. The CMOS image sensor can change the analogue signal to digital in the tip of the endoscope. This short transmission path reduces quality losses.



CLOSE FOCUS ENHANCES IMAGING FOR DIAGNOSIS



The high-performance optical system enhances Close Focus observation capability up to 2 mm. The focus at the edges of an image has been improved. The combination of the Megapixel CMOS image sensor and the high-performance optical system assists various observations ranging from close-up to distant views.

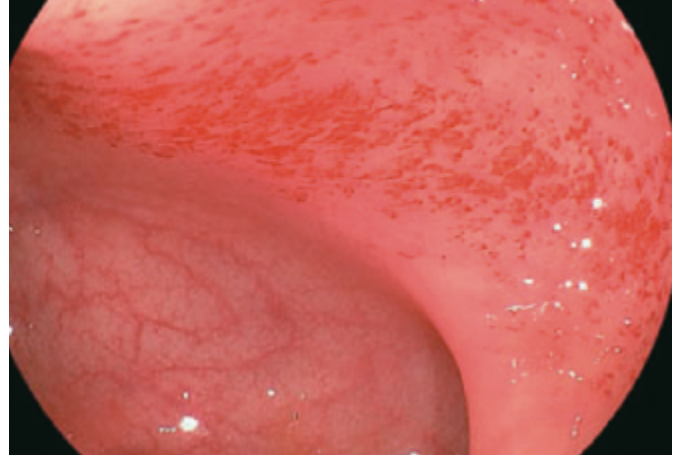


ANTI-BLUR FUNCTION

This function extracts the best still image from multiple images to offer a sharp and clear image every time.



Freezing the image during the examination: High quality image sequences are stored in temporary memory and can be accessed later



Automatic selection and display of a sharp image

AUTO PHOTOMETRIC CONTROL

The automatic light control setting of the IRIS mode adjusts the lighting in accordance with the positioning of the endoscope, providing you with a well-balanced picture. You always get excellent illuminated images* whether focusing close-up or from a distance.



Distant focus



Close Focus

* Available with the 700, 600 and 500 series endoscopes.



EXPERIENCING ENDOSCOPY **FROM SCREENING TO TREATMENT**



RELIABLE GUIDANCE, IMPROVED OUTCOMES

As one of the leading companies in the development of endoscopy technology, Fujifilm is always striving to provide high quality products, excellent services and highly customised business solutions in the world of endoscopy.

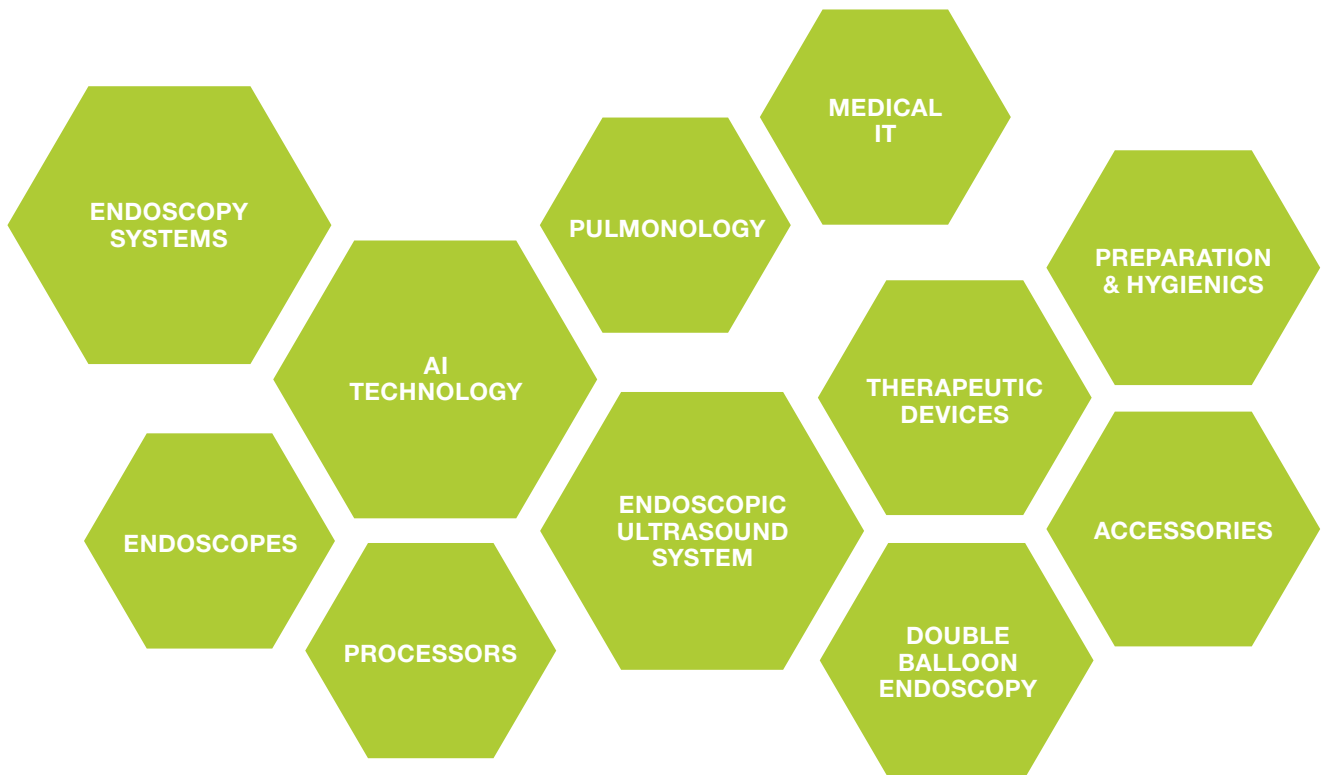
We regularly set new benchmarks, for example, with the introduction of the LED Multi Light technology providing the observation modes LCI and BLI, with devices for double balloon endoscopy as well as the effective Flamingo device to meet the therapeutic challenges of the buried bumper-syndrome.

PRODUCT PORTFOLIO

For diagnostic and interventional endoscopy Fujifilm is pushing the boundaries of endoscopic imaging technologies, AI empowered.

We have built a portfolio of solutions which are able to support the healthcare system to focus on the patient's needs.

Fujifilm offers a wide range of endoscopic and therapeutic technologies from endoscopy systems to devices and services, providing endoscopy solutions from screening to treatment.





DAILY **ENDOSCOPY PRACTICE**



STEP BY STEP THROUGH THE PROCEDURE

Endoscopic examinations and treatments are complex procedures that require fingertip sensitivity as well as extensive, reliable equipment.

All the better if everything comes from a single source and the processes can thus be designed to be as safe and uncomplicated as possible. Fujifilm can guide you expertly through the procedure from start to finish.



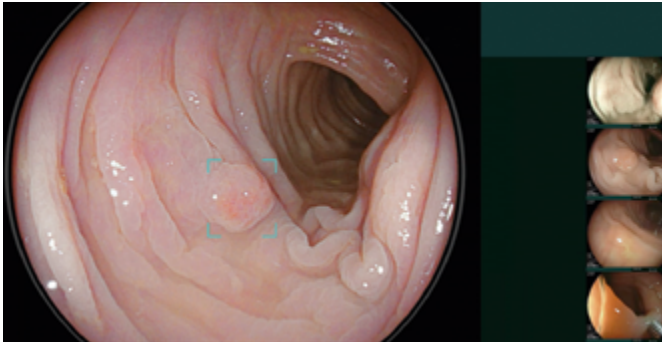
POWERED BY
REiLI



A G-EYE endoscope is used throughout the examination:

- It flattens topography to detect hidden polyps.
- It stabilises the endoscope during characterisation and treatment.
- It reduces bowel slippage.

STEP 1: DETECTION

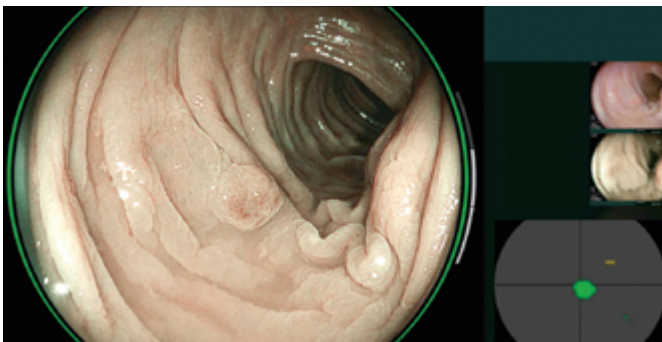


G-EYE®

CADEYE

LCI

STEP 2: CHARACTERISATION

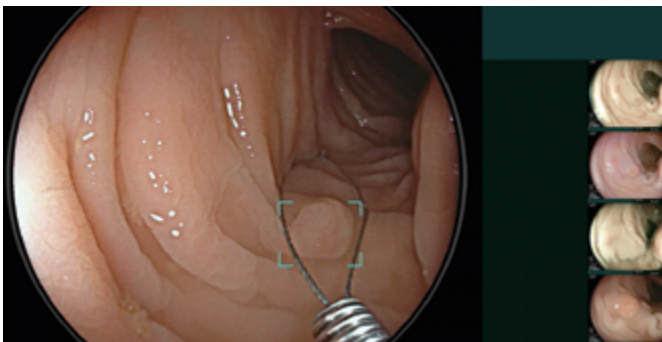


G-EYE®

CADEYE

BLI

STEP 3: TREATMENT



G-EYE®

CROSS SNARE ZERO

ENDOSCOPY SYSTEMS



ELUXEO | COLOASSIST PRO | G-EYE | SCALE EYE | CAD EYE | BL-7000 | VP-7000

Upper GI Endoscopy	23
Double Balloon Endoscopy	28
Lower GI Endoscopy	34
ColoAssist PRO Visualisation System	39
G-EYE®	41
SCALE EYE Virtual Scale	43
CAD EYE Artificial Intelligence	45
Expansion Unit EX-1	47



UPPER GI ENDOSCOPY



SEE MORE, DETECT MORE

The ELUXEO 700 series is compatible with special light observation modes such as Linked Color Imaging (LCI) and Blue Light Imaging (BLI), expanding Fujifilm's offerings in image enhanced endoscopy to support diagnosis, characterisation and treatment.



JAZZ valves:*
protection against
infection and cross
contamination.

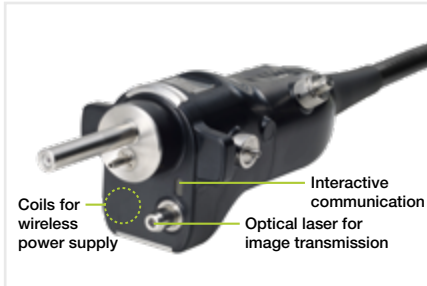


* Manufactured by FUJIFILM medwork GmbH.

ONE-STEP CONNECTOR FOR EASY PLUG-IN



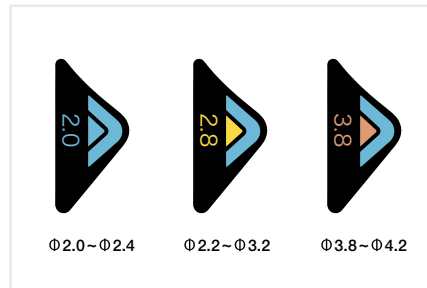
The 700 series endoscopes can easily be plugged in by its One-Step Connector. This is the first connector to incorporate an integrated wireless power supply that provides high-speed transmission of data. The design helps to simplify the cleaning process and reduces the potential for accidental damage.



G7 GRIP FOR COMFORT IN DAILY PRACTICE



In close cooperation with leading endoscopists, Fujifilm has renewed the layout and size of the components of the control portion and repositioned the angulation knobs to increase accessibility from the grip. The G7 grip is designed to have an easy and comfortable feel that improves performance and reduces stress during clinical procedures.



Each 700 series endoscope displays the information required to choose compatible accessories, which helps to facilitate on-the-spot decision making.



- 1 Colour code of G7 control portion
- 2 Identification colour of working channel size
- 3 Working channel diameter
- 4 Corporate brand logo
- 5 Model number



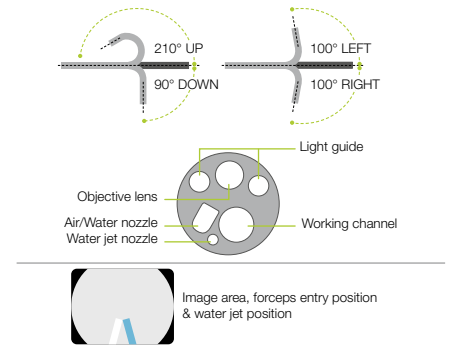
EG-760R ELUXEO VIDEO GASTROSCOPE Routine type



This routine gastroscope from the ELUXEO 760 series is equipped with CMOS technology and provides HD images and videos for daily practice. Close Focus allows observation from as little as 2 mm in depth.



Field of view	140°
Observation range	2–100mm
Bending capability	Up 210°/Down 90° Right 100°/Left 100°
Ø Distal end	9.2 mm
Ø Flexible portion	9.3 mm
Ø Working channel	2.8 mm
Working length	1,100 mm
Total length	1,400 mm



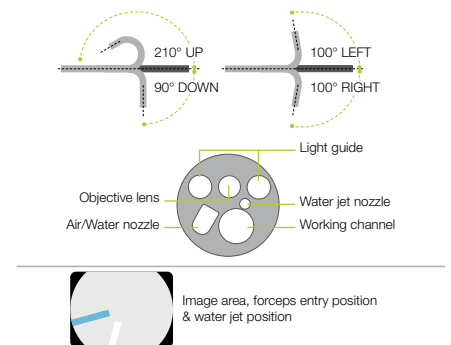
EG-760Z ELUXEO VIDEO GASTROSCOPE Optical magnification



This zoom gastroscope features the well-known 145x Multi Zoom* which leads to clear and more detailed visualisation, supporting deeper analysis of mucosal structures. It has a small bending radius and similar functionality to the routine gastroscope including all features.

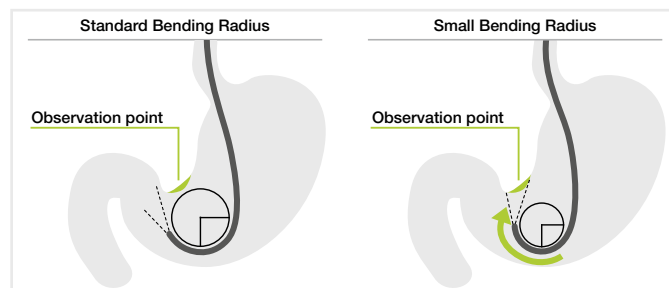


Field of view	Normal 140°/Close 56°
Observation range	Normal 3–100mm Close 1.5–2.5mm
Bending capability	Up 210°/Down 90° Right 100°/Left 100°
Ø Distal end	9.9 mm
Ø Flexible portion	9.8 mm
Ø Working channel	2.8 mm
Working length	1,100 mm
Total length	1,400 mm



Small Bending Radius

Features a tight bending section radius with improved angulation. It is designed to approach the targeted observation point and lesion more easily and with less effort.



* In combination with 26" screen.

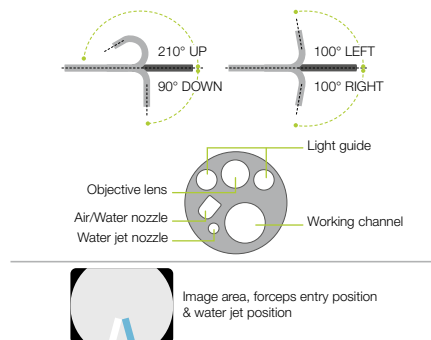
EG-760CT ELUXEO VIDEO GASTROSCOPE Therapeutic type



This gastroscope from the ELUXEO 760 series is equipped with a large 3.8 mm working channel that is especially suitable for therapeutic procedures compared to the standard gastroscope EG-760R with a working channel of 2.8 mm. In addition to therapeutic use, the gastroscope features LCI, intended to improve detection, and BLI, intended to characterise lesions, making it an excellent gastroscope for observation.

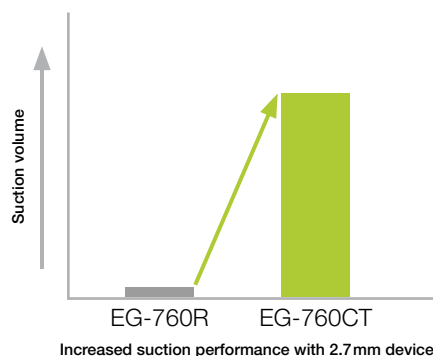
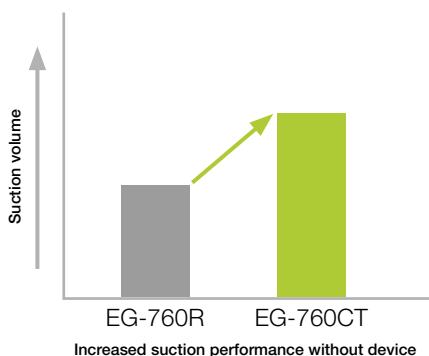


Field of view	140°
Observation range	2–100 mm
Bending capability	Up 210°/Down 90° Right 100°/Left 100°
Ø Distal end	10.5 mm
Ø Flexible portion	10.8 mm
Ø Working channel	3.8 mm
Working length	1,100 mm
Total length	1,400 mm



Enlarged working channel for improved suction performance

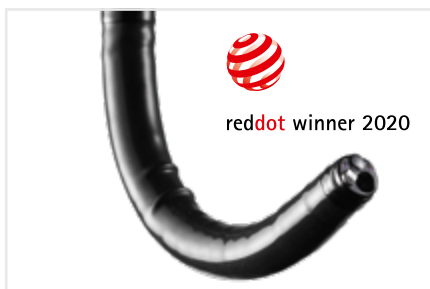
The 3.8 mm working channel has a higher suction capacity compared to other gastroscopes, especially when the therapeutic accessory is inserted into the working channel.



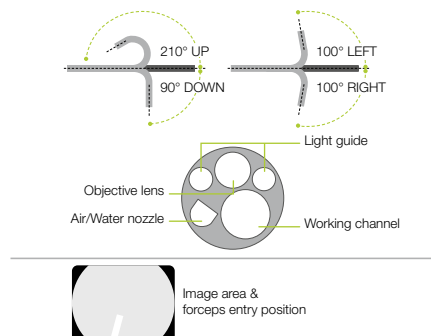
EG-740N ELUXEO VIDEO GASTROSCOPE Ultra slim type



This ultra slim gastroscope with a distal end diameter of 5.8mm is expected to be useful for narrow GI anatomy and for cases featuring stenosis. The slim distal end also supports a soft transnasal insertion and offers the potential to alleviate patients' discomfort.



Field of view	140°
Observation range	3–100 mm
Bending capability	Up 210°/Down 90° Right 100°/Left 100°
Ø Distal end	5.8 mm
Ø Flexible portion	5.9 mm
Ø Working channel	2.4 mm
Working length	1,100 mm
Total length	1,400 mm





EI-740D/S ELUXEO VIDEO GASTROSCOPE & SIGMOIDOSCOPE Dual channel



The ELUXEO EI-740D/S is intended for use in both the upper gastrointestinal tract and sigmoid colon and combines the former EG-530D gastroscope, and ES-530WE sigmoidoscope in one exceptional endoscope. With its two instrument channels (3.7 and 3.2 mm) and improved suction performance, it is especially suitable for various therapeutic procedures.



Field of view	140°
Observation range	3–100 mm
Bending capability	Up 210°/Down 90° Right 100°/Left 100°
Ø Distal end	12.8 mm
Ø Insertion tube	12.8 mm
Ø Working channel	3.7 mm/ 3.2 mm
Working length	1,030 mm
Total length	1,330 mm

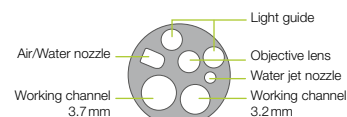
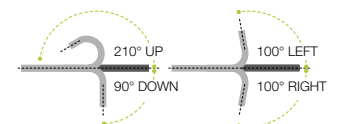


Image area, forceps entry position & water jet position

Large dual instrument channels

Compared to the 530 series dual instrument channel endoscopes, the EI-740D/S endoscope has an improved instrument channel capacity. The smaller instrument channel is increased from 2.8 to 3.2 mm, therefore providing an 3.2 and 3.7 mm dual instrument channel configuration. By accommodating two endotherapeutic devices simultaneously, the endoscope allows for a broader range of therapeutic possibilities.



EG-720R ELUXEO Lite VIDEO GASTROSCOPE Routine type



Field of view	140°
Observation range	2–100 mm
Bending capability	Up 210°/Down 90° Right 100°/Left 100°
Ø Distal end	9.2 mm
Ø Flexible portion	9.3 mm
Ø Working channel	2.8 mm
Working length	1,100 mm
Total length	1,400 mm

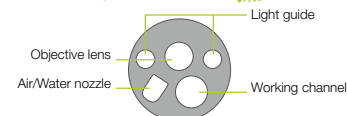
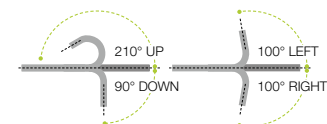


Image area & forceps entry position



DOUBLE BALLOON ENDOSCOPY SYSTEM



EXAMINING THE SMALL INTESTINE IN DOUBLES

By developing the double balloon endoscope, Fujifilm pioneered examining and treating the entire small intestine. The two-balloon system provides an unparalleled level of detail and is, to this day, the gold standard in examination of the small intestine. It is also commonly used in ERCPs with altered conditions post-surgery.



PUSH & PULL SYSTEM

ENLARGED WORKING CHANNEL OF 3.2 mm FOR EFFICIENT TREATMENT

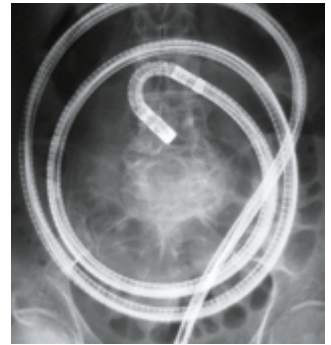
DOUBLE BALLOON ENDOSCOPY

Double balloon endoscopy is a technique that allows the whole length of the small intestine to be visualised, opening doors to many therapeutic interventions.

Fujifilm developed the DBE system to meet the clinical needs for more precise and efficient diagnoses and treatment.



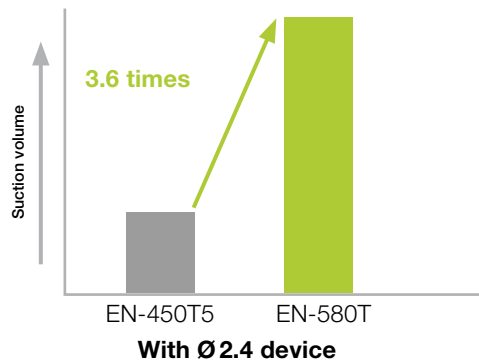
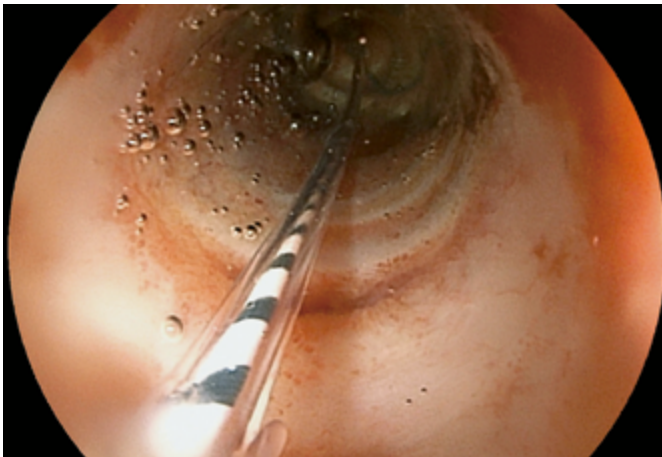
Oral insertion (small intestine)



Anal insertion (small intestine)

Working channel with 3.2mm diameter

The enlarged 3.2 mm working channel suits procedures such as haemostasis and balloon dilation. As it enables blood or mucus to be aspirated while a therapeutic device is inserted, quicker haemostasis is possible. The large working channel is also designed for easier insertion and removal of a balloon catheter before and after dilation of stricture.



The 3.2 mm working channel provides greater suction performance than conventional models.*



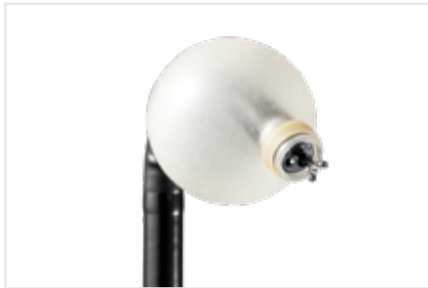
Specially designed one-step connector and relocated balloon air feed inlet for better operability

The balloon air feed inlet has been relocated from the control portion to the connector portion, creating a better examination environment. Also, a one-step connector (TY-06 or TY-500) specially designed for the balloon air feed inlet on the endoscope is provided, simplifying the preparation.

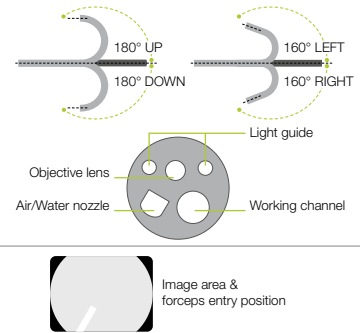
* According to Fujifilm data



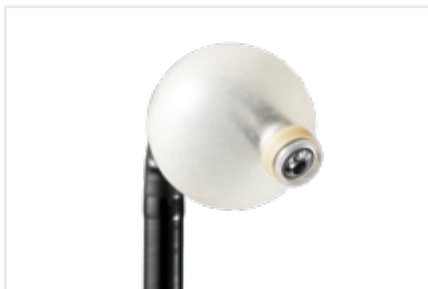
EN-580T ENTEROSCOPE Therapeutic type



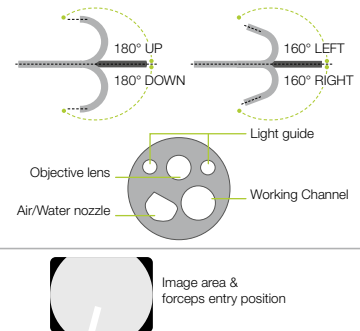
Viewing direction	0° (Forward)
Field of view	140°
Observation range	2–100mm
Bending capability	Up 180°/Down 180° Right 160°/Left 160°
Ø Distal end	9.4mm
Ø Flexible portion	9.3mm
Ø Working channel	3.2mm
Working length	2,000mm
Total length	2,300mm



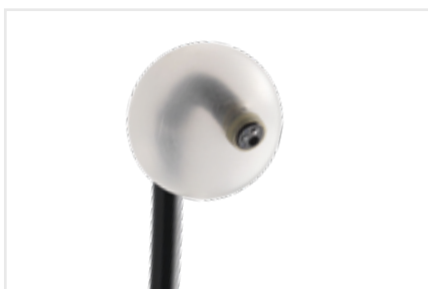
EN-580XP ENTEROSCOPE Slim type



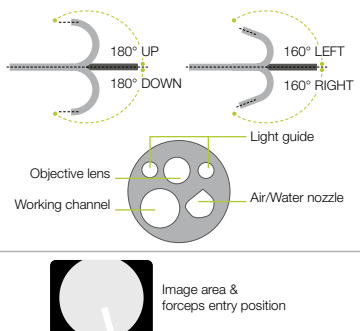
Viewing direction	0° (Forward)
Field of view	140°
Observation range	2–100mm
Bending capability	Up 180°/Down 180° Right 160°/Left 160°
Ø Distal end	7.5mm
Ø Flexible portion	7.7mm
Ø Working channel	2.2mm
Working length	2,000mm
Total length	2,300mm



EI-580BT SHORT DOUBLE BALLOON ENDOSCOPE



Viewing direction	0° (Forward)
Field of view	140°
Observation range	2–100mm
Bending capability	Up 180°/Down 180° Right 160°/Left 160°
Ø Distal end	9.4mm
Ø Flexible portion	9.3mm
Ø Working channel	3.2mm
Working length	1,550mm
Total length	1,850mm



Some tubes and balloons used for EN-580T and EN-580XP are made from non-latex materials.

TS-1114B/1214B/1314B* OVERTUBE contains silicone rubber

Silicone overtube, sterile, single-use, with expiration date.



Model	TS-1114B	TS-1214B	TS-1314B
Compatible endoscopes	EN-580XP	EN-450P5/20	EN-450T5, EN-580T

* Some tubes and balloons used for EN-580T and EN-580XP are made from non-latex materials.

TS-12140/13140/13101 OVERTUBE contains natural rubber latex

Latex overtube, sterile, single use, with expiration date.



Model	TS-12140	TS-13140	TS-13101
Compatible endoscopes	EN-450P5/20	EN-450T5, EN-580T	EC-450BI5, EI-580BT

TY-400/500* CONNECTION TUBES for silicone overtube

Connection tube kit for silicone overtube, PB-30, 450 and 500 series – exchange once every month or once every 10 cases.



Model	TY-400	TY-500
Compatible endoscopes	450 series	500 series

* Some tubes and balloons used for EN-580T and EN-580XP are made from non-latex materials.

TY-04/06 CONNECTION TUBES for latex overtube

Connection tube kit for latex overtube, PB-20/30, 450 and 500 series – exchange once every month or once every 10 cases.



Model	TY-04	TY-06
Compatible endoscopes	450 series	500 series



BS-4* Balloon contains silicone rubber

Endoscope balloon Ø 35 mm, single-use, with expiration date (10 pcs balloon + 20 pcs fixing rubber/pack), ST-10 needed to attach.



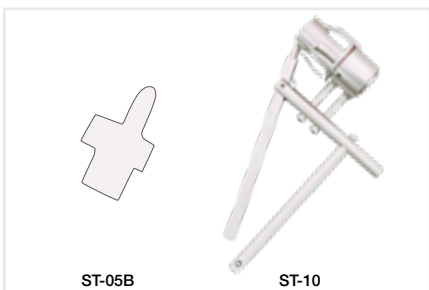
* Some tubes and balloons used for EN-580T and EN-580XP are made from non-latex materials.

BS-2 Balloon contains natural rubber latex

Endoscope balloon Ø 35 mm, single-use, with expiration date (10 pcs balloon + 20 pcs fixing rubber/pack).



ST-05B/ST-10 BALLOON SETTING TOOLS for fixation



PB-30 BALLOON CONTROL UNIT

To be used to control pressure inside the balloons which are inflated and deflated during DBE examinations.



Maximum flow rate of pump	170ml±50ml/ 10 sec.
Set pressure accuracy	±2 kpa
Set pressure of balloon	5.6 kpa
Weight	7.0kg (Main unit) 0.4kg (Remote switch)
Power	AC100–240V 50/60 Hz/0.8A
Dimensions (W x H x D)	145 x 170 x 410 mm





LOWER GI ENDOSCOPY



AI FOR COLONOSCOPY

All ELUXEO 700 series colonoscopes are compatible with Fujifilm's CAD EYE software to support physicians to detect and characterise colonic polyps, developed utilising AI technology.

ELUXEO ULTRA

The ELUXEO Ultra platform features a range of tools and technologies. It will evolve continuously, so our best endoscopy system for your patients today will remain so tomorrow.

EC-760R-V/M, I, L ELUXEO VIDEO COLONOSCOPE Routine type



This routine colonoscope has a wide field of view of 170° as well as a large working channel diameter of 3.8 mm. It features the G7 grip and the Flexibility Adjuster. In addition, it has a slim diameter of 12.0 mm and includes a water jet function and CMOS technology.



Field of view	170°
Observation range	2–100 mm
Bending capability	Up 180°/Down 180° Right 160°/Left 160°
Ø Distal end	12.0 mm
Ø Flexible portion	12.0 mm
Ø Working channel	3.8 mm
Working length	1,330/1,520/1,690 mm
Total length	1,650/1,840/2,010 mm

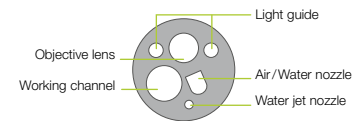
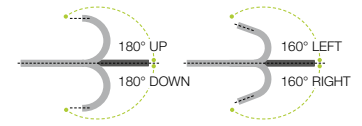
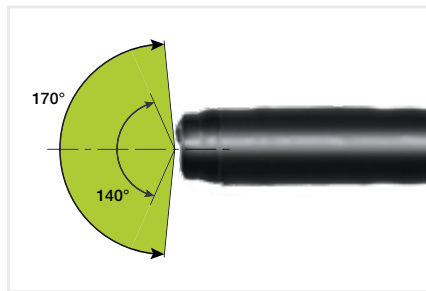


Image area, forceps entry position & water jet position

Wide 170° field of view

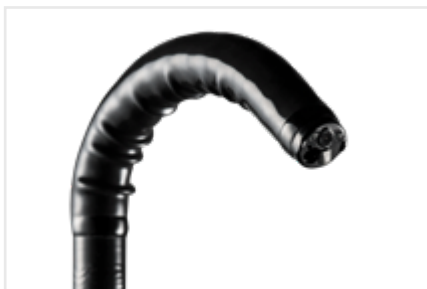
With EC-760R and EC-760P, a wide 170° field of view is available. It is designed to observe and approach smoothly, even areas that are hard to observe, such as the reverse side of folds.



EC-760Z-V/M, L ELUXEO VIDEO COLONOSCOPE Optical magnification



The zoom colonoscope is an all-rounder. It features the brilliant and easy-to-operate 145x Multi Zoom* magnification which leads to more detailed visualisation, supporting a deeper analysis of mucosal and vascular patterns. Compared to the EC-760ZP ultra slim zoom type, it comes with a stiffer insertion tube and a larger working channel (3.8 mm vs. 3.2 mm), meaning it is also well-suited for basic therapeutic procedures.



Field of view	Normal 140°/Close 56°
Observation range	1.5–100 mm Normal 3–100 mm Close 1.5–2.5 mm
Bending capability	Up 180°/Down 180° Right 160°/Left 160°
Ø Distal end	12.8 mm
Ø Insertion tube	12.8 mm
Ø Working channel	3.8 mm
Working length	1,330 mm/1,690 mm
Total length	1,650 mm/2,010 mm

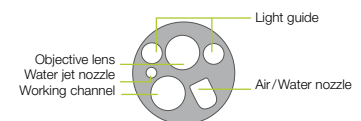
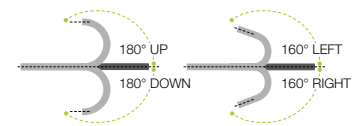


Image area, forceps entry position & water jet position

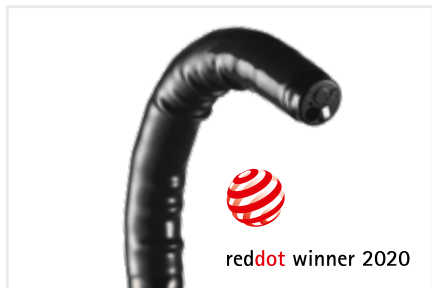
* In combination with 26" screen.



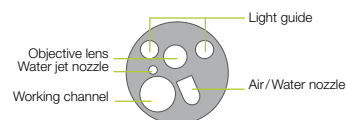
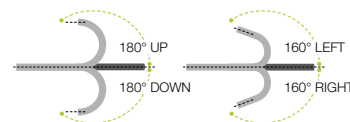
EC-760ZP-V/M, L ELUXEO VIDEO COLONOSCOPE Optical magnification



The slim zoom colonoscope features the brilliant and easy-to-operate Multi Zoom with 145x maximum magnification*. Together with BLI, details of the mucosal and vascular patterns become visible. Like the routine endoscope, it features the full range of functionalities including flexible adjustment even with the slim diameter of 11.8 mm.



Field of view	Normal 140°/Close 56°
Observation range	Normal 3–100mm Close 1.5–2.5mm
Bending capability	Up 180°/Down 180° Right 160°/Left 160°
Ø Distal end	11.7 mm
Ø Flexible portion	11.8 mm
Ø Working channel	3.2 mm
Working length	1,330/1,690 mm
Total length	1,650/2,010 mm



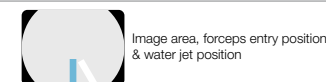
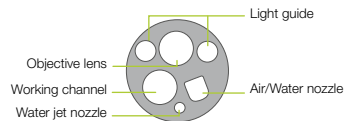
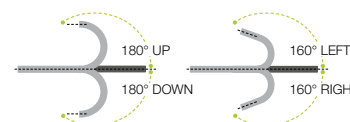
EC-760P-V/M, L ELUXEO VIDEO COLONOSCOPE Ultra slim type



This ultra slim colonoscope from the ELUXEO 760 series has a distal end diameter of only 11.1 mm and is therefore expected to be useful for narrow GI anatomy, cases featuring stenosis and therapeutic use. A wide 170° field of view enables a visualisation even in hard-to-observe areas. It features the G7 grip and the Flexibility Adjuster for easier insertion.



Field of view	170°
Observation range	2–100 mm
Bending capability	Up 180°/Down 180° Right 160°/Left 160°
Ø Distal end	11.1 mm
Ø Flexible portion	11.5 mm
Ø Working channel	3.2 mm
Working length	1,330/1,690 mm
Total length	1,650/2,010 mm



* In combination with 26" screen.

EC-740T/M, L ELUXEO VIDEO COLONOSCOPE Slim & treatment type



This slim colonoscope is equipped with Advanced Force Transmission, 210° up-angulation and a G7 grip that supports excellent manoeuvrability. It is expected to be useful for more challenging anatomies and narrow GI anatomy, such as stenosis, severe inflammation, or anatomical adhesion. With the additional observation modes LCI, intended to improve detection, and BLI, intended to characterise lesions, this is an excellent colonoscope for both observation and therapeutic procedures.



Field of view	140°
Observation range	3–100mm
Bending capability	Up 210°/Down 160° Right 160°/Left 160°
Ø Distal end	9.8mm
Ø Flexible portion	10.7mm
Ø Working channel	3.2mm
Working length	1,330/1,690mm
Total length	1,630/1,990mm

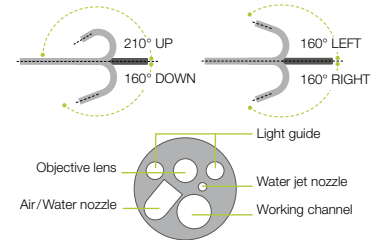


Image area, forceps entry position & water jet position

SMART BEND



Smart Bend provides excellent manoeuvrability, observation and therapeutic treatments from 210° up-angulation and a small bending radius. It is expected to be useful for treatment of difficult-to-reach lesions.



Smart Bend colonoscope: Up to 210°



Colonoscope without Smart Bend



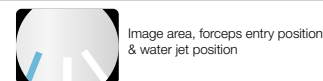
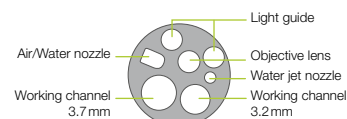
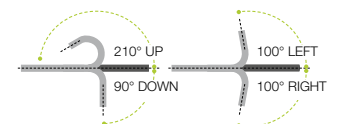
EI-740D/S ELUXEO VIDEO GASTROSCOPE & SIGMOIDOSCOPE Dual channel



The ELUXEO EI-740D/S is intended for use in both the upper gastrointestinal tract and sigmoid colon and combines the former EG-530D gastroscop, and ES-530WE sigmoidoscope in one exceptional endoscope. With its two instrument channels (3.7 and 3.2 mm) and improved suction performance, it is especially suitable for various therapeutic procedures.



Field of view	140°
Observation range	3–100 mm
Bending capability	Up 210°/Down 90° Right 100°/Left 100°
Ø Distal end	12.8 mm
Ø Insertion tube	12.8 mm
Ø Working channel	3.7 mm/3.2 mm
Working length	1,030 mm
Total length	1,330 mm

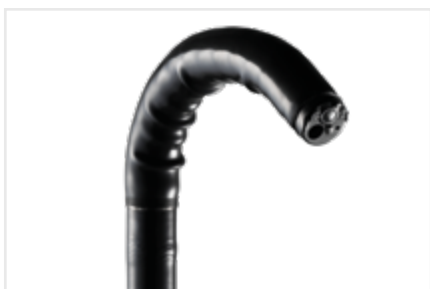


Large dual instrument channels

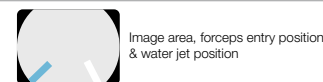
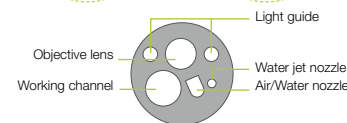
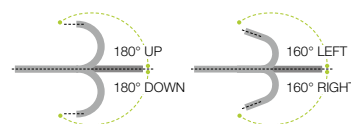
Compared to the 530 series dual instrument channel endoscopes, the EI-740D/S endoscope has an improved instrument channel capacity. The smaller instrument channel is increased from 2.8 to 3.2 mm, therefore providing an 3.2 and 3.7 mm dual instrument channel configuration. By accommodating two endotherapeutic devices simultaneously, the endoscope allows for a broader range of therapeutic possibilities.



EC-720R/M, I, L ELUXEO Lite VIDEO COLONOSCOPE Routine type



Field of view	170°
Observation range	2–100 mm
Bending capability	Up 180°/Down 180° Right 160°/Left 160°
Ø Distal end	12.8 mm
Ø Flexible portion	12.8 mm
Ø Working channel	3.8 mm
Working length	1,330/1,520/1,690 mm
Total length	1,630/1,820/1,990 mm





COLOASSIST PRO

ENDOSCOPE VISUALISATION SYSTEM



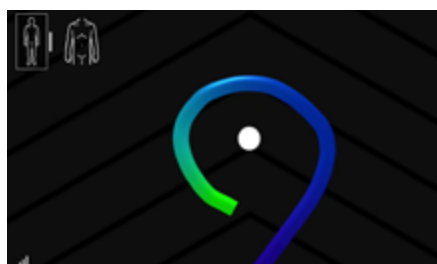
EXCELLENT VISUALISATION

Fujifilm’s Endoscope Visualisation System displays the configuration of the endoscope in real-time by reproducing a coloured graphical representation of the endoscope next to endoscopic view.



The endoscope shape is to be displayed on the monitor for VP-7000 by using the PoP function

The three display modes support physicians in understanding the behaviour of colonoscopes during the intubation, to enable the identification of loop formation and to reduce patient burden during an endoscopy.



Single Screen Mode: Displays the endoscope model from one direction (out of 4)



Dual Screen Mode: Displays the endoscope model from two directions

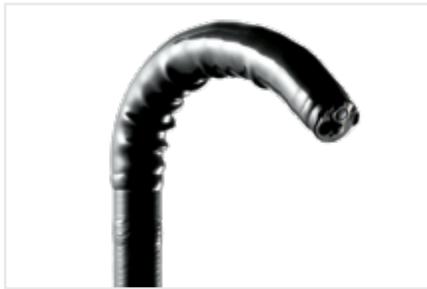



Sky View Mode: Displays the endoscope model obliquely from above the foot section of the patient

EC-760S-G/L, M ELUXEO COLONOSCOPE Routine type

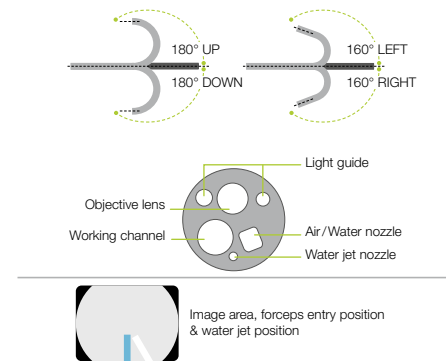


This routine colonoscope with visualisation function from the ELUXEO 760 series is equipped with CMOS technology and provides HD images and videos for daily practice. Close Focus allows observation from a distance as close as 2 mm.



 A unique symbol for the endoscope with "Visualizer"

Field of view	170°
Observation range	2–100 mm
Bending capability	Up 180°/Down 180° Right 160°/Left 160°
Ø Distal end	12.8 mm
Ø Flexible portion	12.8 mm
Ø Working channel	3.8 mm
Working length	1,330/1,690 mm
Total length	1,650/2,010 mm
Endoscope Visualizer	Compatible



EV-3D ENDOSCOPE VISUALIZER



Power	100–240V ~ 50/60 Hz
Current consumption	1.0–0.7 A
Video Output	DVI-I (1280x1024 px/ 1920 x 1080 px) HD-SDI (1920x1080 px)
Supported endoscopes	EC-760S-G/L, M
Dimensions (W x H x D)	380 x 80 x 445 mm (including projection)
Weight	6.5 kg
Frequency band	200–2000 Hz

The system requires the Endoscope Visualizer EV-3D with peripherals (handmarker, transceiver dish) as well as the dedicated colonoscope (EC-760S-G/L,M). It is compatible with CAD EYE AI technology.



Design Award Winner
Endoscope Visualisation System





ELUXEO FEATURING G-EYE®



FLATTENED TOPOGRAPHY

The G-EYE® 760R endoscope is equipped with a permanently integrated balloon at the bending section of the routine colonoscope. On demand, the reusable balloon can be inflated, thereby flattening the colonic walls and improving the detection of hidden polyps*. It is also compatible with CAD EYE AI technology.



FOR INCREASED ADR*

CONTROLLED WITHDRAWAL™ CENTRALISES ENDOSCOPE OPTICS, REDUCES BOWEL SLIPPAGE

ENDOSCOPE STABILISATION DURING INTERVENTIONS

* 'G-EYE colonoscopy is superior to standard colonoscopy for increasing adenoma detection rate: an international randomized controlled trial', Shirin H. et al., *Gastrointestinal Endoscopy* 2019; 89(3): 545-553.
Halpern, Z. et al. Comparison of adenoma detection and miss rates between a novel balloon colonoscope and standard colonoscopy: a randomized tandem study (*Endoscopy* 2015; 47(03): 238-244 DOI: 10.1055/s-0034-1391437).

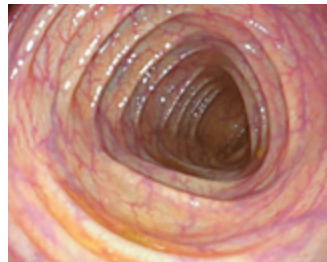
Assisting visualisation, stabilisation and control during colonoscopy: Besides detection enhancement, physicians could benefit from the G-EYE® system throughout the whole procedure, from assistance in delooping during intubation, via Controlled Withdrawal™ that reduces bowel slippage, through to supporting therapeutic interventions e.g. EMRs by stabilising and anchoring the endoscope tip.

INTUBATION



G-EYE® could be used for delooping with anchoring function

DETECTION

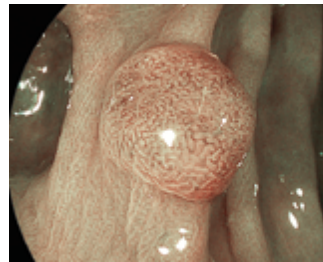


G-EYE® flattens topography to detect hidden polyps

Controlled Withdrawal™ with partially inflated balloon



CHARACTERISATION



G-EYE® stabilises the endoscope during characterisation

Controlled Withdrawal™ with partially inflated balloon



TREATMENT

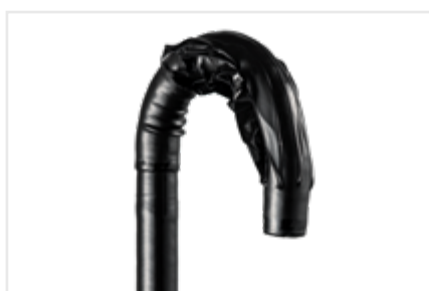


G-EYE® stabilises the endoscope during treatment

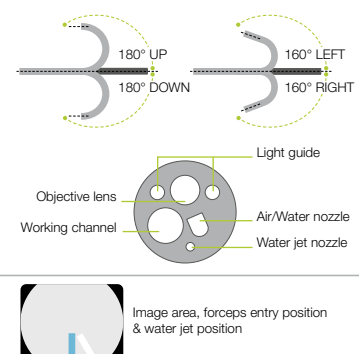
G-EYE® 760R*



The G-EYE® endoscope is based on the ELUXEO EC-760R routine colonoscope, comes in three different lengths and features the same technical specifications including LCI and BLI imaging modes. To operate, the Spark²C Inflation System is required.



Field of view	170°
Observation range	2 – 100 mm
Bending capability (when deflated)	Up 180°/Down 180° Right 160°/Left 160°
Ø Distal end	12.0 mm
Ø Insertion tube	12.0 mm
Ø Working channel	3.8 mm
Working length	1,330/1,520/1,690 mm
Total length	1,650/1,840/2,010 mm
Balloon diameter	Up to 55 mm



SPARK²C Inflation System

* Manufactured by Smart Medical Systems Ltd.



SCALE EYE

VIRTUAL MEASUREMENT



SCALE EYE



IMPORTANCE OF MEASUREMENT

The size of colonic lesions is considered important information, influencing optical diagnosis-based strategies (e.g. resect and discard), the surveillance interval and therapeutic interventions. However, it is not always straight-forward to estimate lesion size in the endoscopic field of view. Fujifilm has developed SCALE EYE*, a function designed to aid endoscopists in estimating the size of lesions in the colon.

By simply pressing the endoscope switch, SCALE EYE is activated to support the endoscopist to determine the size of the lesion within the endoscopic field of view.

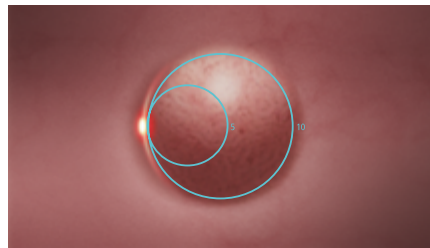


Simple User Interface

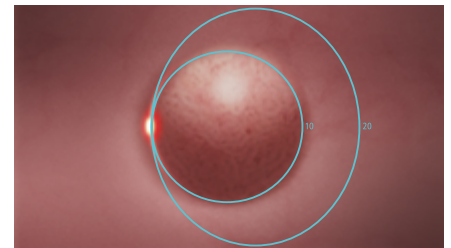
* More detailed information of SCALE EYE is provided in the operation manual.

Multiple Measurement Scales

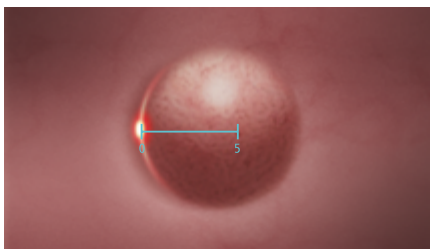
Five different scales are available according to the user preference



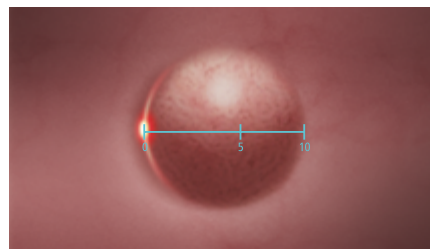
Circle 5-10 mm



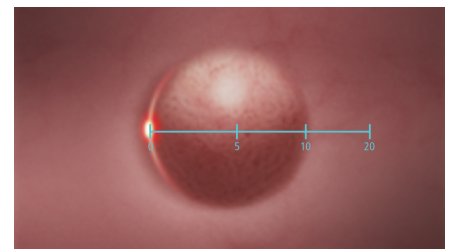
Circle 10-20 mm



Line 5 mm



Line 5-10 mm

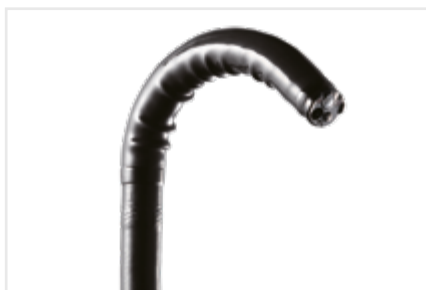


Line 5-10-20 mm

EC-760S-A/M, L ELUXEO VIDEO COLONOSCOPE



To enable the virtual scale (SCALE EYE) functionality, the dedicated EC-760S-A/M and EC-760S-A/L colonoscopes (equipped with a red laser) must be used in combination with SCALE EYE software EW10-VM01 and EX-1 hardware. SCALE EYE can be used in combination with White Light or LCI mode and is compatible with CAD EYE.



A unique symbol for the endoscope with "Virtual Scale"

Field of view	170°
Observation range	2–100mm
Bending capability	Up 180°/Down 180° Right 160°/Left 160°
ø Distal end	12.8mm
ø Flexible portion	12.8mm
ø Working channel	3.8mm
Working length	1,330/1,690mm
Total length	1,650/2,010mm
Virtual Scale	Compatible

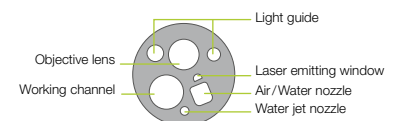
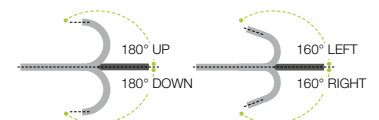


Image area, forceps entry position & water jet position



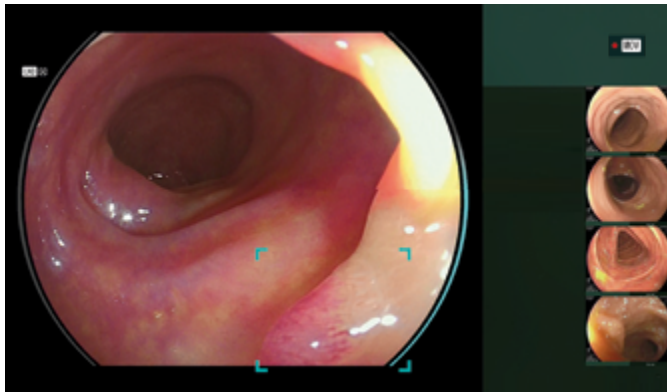
CAD EYE: *ELUXEO* MEETS ARTIFICIAL INTELLIGENCE



INTELLIGENT SUPPORT

CAD EYE has been developed utilising AI deep learning technology and aims to support endoscopic lesion detection and characterisation in the colon.

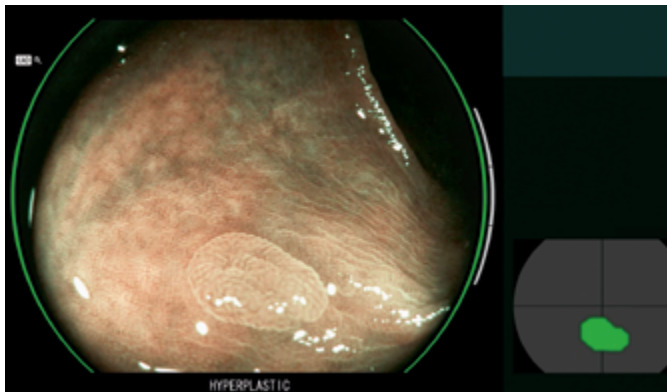
CAD EYE works with all ELUXEO 700 series colonoscopes in combination with EW10-EC02 software and EX-1 hardware. It can easily be controlled with the endoscope switch or directly at the processor.



Detection with LCI

FOR COLONIC POLYP DETECTION & CHARACTERISATION

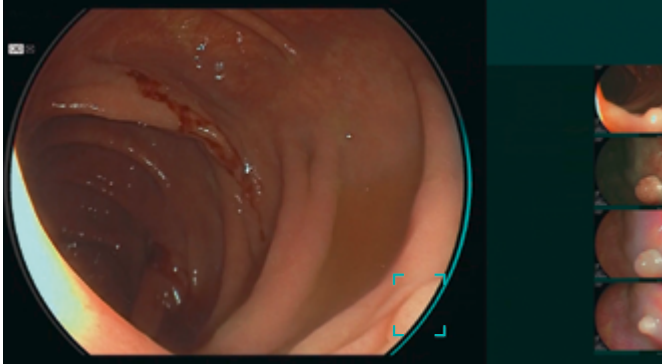
COMPATIBLE WITH ALL ELUXEO 700 SERIES COLONOSCOPES, COLOASSIST PRO, G-EYE® 760R & SCALE EYE



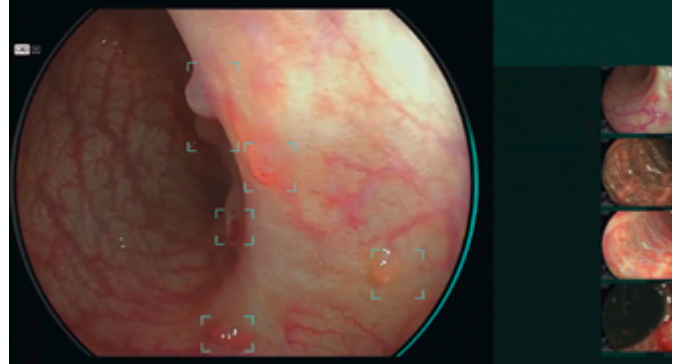
Characterisation with BLI

REAL-TIME DETECTION

CAD EYE is aimed at improving the real-time polyp detection rate to expert level, helping recognise flat lesions, multiple polyps simultaneously as well as any lesions at the corner of the image. CAD EYE Detection is possible with White Light and LCI (Linked Color Imaging) mode.



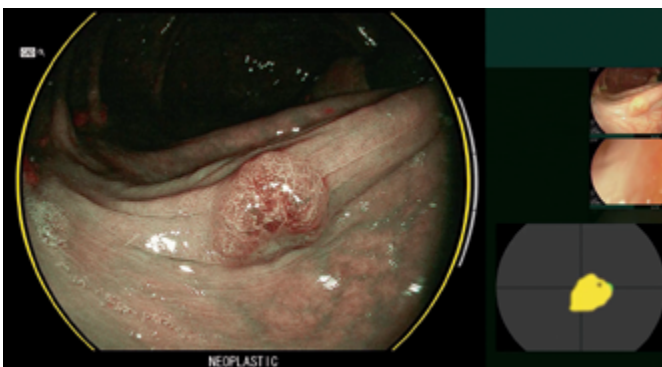
White Light Mode



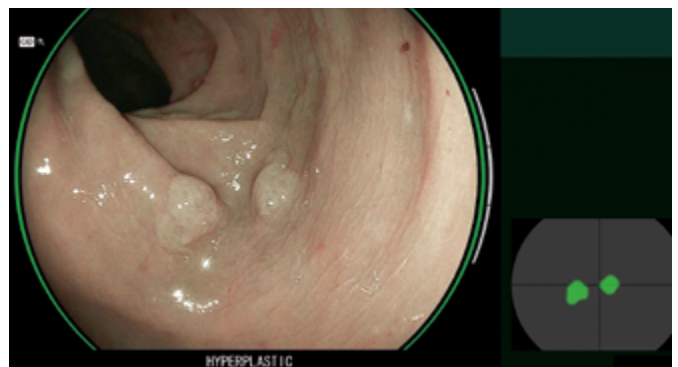
LCI Mode

CHARACTERISATION SUPPORT

Once a suspected polyp is detected by CAD EYE Detection (WLI or LCI), CAD EYE Characterisation – in combination with BLI – can support endoscopists in the predictive histopathological diagnosis of the polyp. This function analyses in real-time and without freezing or zooming if a polyp is hyperplastic or neoplastic, which is visually indicated by the use of different colour codes in the Position Map. CAD EYE Characterisation is intended to make procedures more efficient by increasing the accuracy of diagnosis to an experts' level.*



BLI Mode – Neoplastic



BLI Mode – Hyperplastic

POWERED BY
REiLI 

* According to the validation study, the accuracy of non-experts with the assistance of CAD EYE Characterisation was equivalent to that of an expert.



EX-1 EXPANSION UNIT*



The Expansion Unit EX-1 is required to install the software for storage purposes as well as for SCALE EYE and CAD EYE. All softwares are compatible with each other. The EX-1 is future-ready thus upcoming applications can be installed as well.



Compatible processor	VP-7000, EP-6000
Video signals IN	DVI-I x1 (1920 x 1080)
Video signals OUT	DVI-I x1, DVI-D x1 (1920 x 1080)
Other connections	2x RS-232C Connectors Front 1x USB 2.0, back 4 x USB 3.1 2x Network/LAN ports
Power rating	100-240 VAC +/- 10%, 50/60 HZ 1.25 to 0.60 A
Dimensions (W x H x D)	370 x 99 x 465.6mm (including projection)
Weight	7.1 kg

EW10-SC01 SOFTWARE



Compatible endoscopes	700, 600 and 500 series endoscopes
Package content	USB flash drive installation for documentation function
Functions	- Movie and still image recording with preview function - Network function: Still image transfer via FTP/FTPS/DICOM storage, for video recording transfer via Samba network protocol - Automatic copy to external USB memory
Image storage specifications	Resolution: Full HD/ SXGA File format: TIFF/ JPEG
Video storage specifications	Resolution: Full HD, File format: MP4 Frame rate: 30 fps Max. recording time: 3 hours continuously** Internal memory: max. 90 hours**

EW10-EC02 SOFTWARE



Compatible endoscopes	700 series colonoscopes
Package content	USB flash drive for CAD EYE installation
Functions	Detection and Characterisation support for colonic polyps

EW10-VM01 SOFTWARE



Compatible endoscopes	EC-760S-A/M, L
Package content	USB flash drive for SCALE installation
Functions	Virtual scale for measurement support

* Manufactured by EIZO Corporation, Japan.

** From version 1.4.000 on.

LIGHT SOURCES & PROCESSORS



BL-7000 | VP-7000 | EP-6000

Light Source & Processor 7000	49
Light Source & Processor 6000	51



BL-7000 & VP-7000



FOR DEMANDING PROCEDURES

Our long-standing experience in developing imaging technologies also provides you with an excellent processor for your application at all times.

All models offer digital image processing and video interfaces. With ergonomic user controls, these video processors save valuable time and facilitate more comfortable examinations.

Video Processor VP-7000



Light Source BL-7000

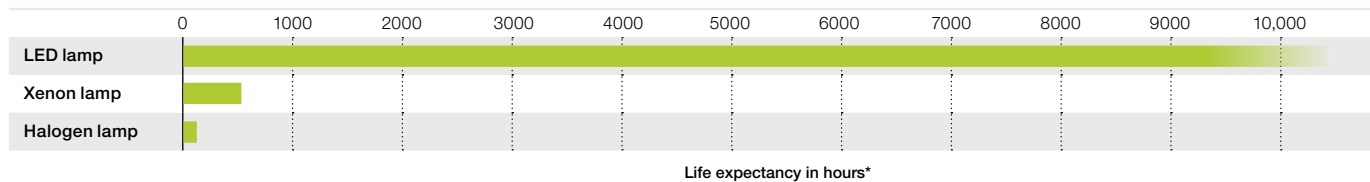


FUJIFILM group
Green Policy

BL-7000 ELUXEO 4-LED LIGHT SOURCE with high durability

A reliable light source is a prerequisite for use in large clinics as well as smaller outpatient centres to ensure procedures can take place as scheduled. To achieve high standards, the eco-friendly ELUXEO 7000 system features the 4-LED Multi Light Source, which outperforms conventional Xenon or Halogen light sources: With 10,000 hours* average life expectancy for the LED lights, the ELUXEO system has far longer durability while having much lower energy consumption, resulting in better cost-efficiency.

Light source	4-LED
Air supply pump	High, Mid, Low, Off
Power rating	100–240 V, 50/60 Hz, 1.2–0.7A
Dimensions (W x H x D)	390 x 155 x 485 mm (including projection)
Weight	12.0 kg
Optical radiation safety	Class 1 LED product



Our confidence in the ELUXEO system BL-7000 is reflected by Fujifilm's **Durability Warranty**, which covers any defect of the LED light source unit that is attributable to a manufacturing or assembly fault under normal use for a period of five years or 10,000 operating hours, whichever comes first.*

VP-7000 ELUXEO HIGH-PERFORMANCE VIDEO PROCESSOR



The ELUXEO video processor VP-7000 enables you to make use of the many features provided by Fujifilm's wide range of endoscopes along with the 4-LED illumination system and its LCI and BLI visualisation modes. In addition to the ELUXEO 700 series endoscopes, it is also compatible with the 600 and 500 series of endoscopes. The processor creates high-quality images displayed in full HD on the monitor. Automatic back-up mode for data storage is integrated and the processor is DICOM compatible.

Compatible endoscopes	700/600/500 series
Output	DVI-D x2, DVI-I x1, HD-SDI x2, RGB-TV x1, S VIDEO x1, VIDEO x1
Input	1 channel PoP
External memory	USB Flash Drive
Power rating	100–240 V, 50/60Hz, 0.8–0.5A
Dimensions (W x H x D)	390 x 110 x 485 mm (including projection)
Weight	9.0 kg

* This Warranty is only valid according to the terms and conditions of the Durability Warranty Policy.



EP-6000 ELUXEO Lite VIDEO PROCESSOR with built-in LED light source



The ELUXEO Lite EP-6000 combines a reliable 3-LED light source with a processor that enables you to make use of the many features provided by Fujifilm’s wide range of endoscopes. Available combined with the 700 series LCI (Linked Color Imaging) and BLI (Blue Light Imaging) visualisation modes.

Due to the use of economical LED lamps with a long durability this system is very eco-friendly. It is also compatible with the 600 and 500 series of endoscopes. The ELUXEO Lite EP-6000 creates quality images and videos displayed in full HD on the monitor.

Automatic back-up mode for data storage is integrated and the processor is also DICOM compatible.

Light source	3-LED
Air supply pump	High, Mid, Low, Off
Compatible endoscopes	700, 600 and 500 series endoscopes*
Output	DVI-D x2, RGB-TV x1, S VIDEO x1, VIDEO x1
External memory	USB Flash Drive
Power rating	100–240 V, 50/60 Hz, 2.0–1.1A
Dimensions (W x H x D)	395 x 210 x 485 mm (including projection)
Weight	15.0 kg
Optical radiation safety	Class 1 LED product

Available observation modes	White Light	BLI	LCI	FICE
700 series	●	●	●	●
600/500 series	●			●



* Excluding 590 series endoscopes, EG-530UT2, EG-530UT, EG-530UR2 and EG-530UR.

ESD



CLUTCHCUTTER | FLUSHKNIFE | TRACMOTION | JW-3 | PURASTAT

Hoods	53
Knives	55
Traction Device	59
Water Pump	61
Injection Needles	62
Haemostat	63
Insufflator	63



ST HOODS



ST Hoods have a transparent, small caliber tip, maintaining a clear field of view.

Model	Material code	Characteristics	Ø Outer (mm)	Ø Inner tip (mm)	Tip length (mm)	Accessory guide	Applicable endoscopes	Unit
DH-28GR	16426426	Transparent; silicone rubber, polycarbonate resin	11.5	8.0	7.0	Without	EG-760Z EG-600ZW EC-740T/M, L	5
DH-29CR	16426438	Transparent; silicone rubber, polycarbonate resin	12.4	8.0	7.0	Without	EG-760CT EC-760P-V/M, L	5
DH-30CR	16426440	Transparent; silicone rubber, polycarbonate resin	13.8	8.0	7.0	Without	EC-760R-V/M, I, L EC-760ZP-V/M, L EC-760Z-V/M, L EC-720R/M, I, L EC-600WM/WI/WL EC-600ZW/M, L	5
DH-33GR	16635493	Transparent; guide type; silicone rubber, polycarbonate resin	11.8	7.0	7.0	Yes	EG-760Z EG-760CT EC-740T/M, L	5
DH-34CR	16635508	Transparent; guide type; silicone rubber, polycarbonate resin	13.6	7.0	7.0	Yes	EC-760R-V/M, I, L EC-760ZP-V/M, L EC-600WM/WI/WL	5



DH-28GR



DH-29CR



DH-30CR



DH-33GR



DH-34CR

ST Hood features

- Providing a clear and stable view by maintaining the distance between the distal end and mucosal layer
- Side holes for better drainage of fluid to maintain a clear endoscopic view
- Sterile and single-use for better infection control
- Guide groove (available with DH-33GR and DH-34CR) to stabilise endotherapeutic devices

OBSERVATION HOOD



Model	Characteristics	Ø Outer (mm)	Tip length (mm)	Applicable endoscopes
DH-17EN	Transparent	11.5	1.5	EI-580BT, EN-580T



DH-17EN

TOP ENDOSCOPIC HOODS*

THIRD PARTY PRODUCT



The slit and drainage hole allows fluid to drain away quickly.

Model	Material code	Characteristics	Ø Outer (mm)	Tip length (mm)	Applicable endoscopes	Unit
SHS	70100142568	Soft and transparent	8.6–9.8		EG-760R	5
SHM	70100139249	Soft and transparent	9.8–10.6		EG-760Z EG-760CT EC-740T/M, L	5
SHL	70100139248	Soft and transparent	10.6 –12.6		EC-760R-V/M, I, L EC-760ZP-V/M, L EC-760P-V/M, L	5
SHLL	70100143067	Soft and transparent	12.6 –14.0		EC-760Z-V/M, L	5
SHM-B	70100139250	Soft and black	9.8–10.6		EG-760Z EG-760CT EC-740T/M, L	5
SHL-B	70100139251	Soft and black	10.6 –12.6		EC-760R-V/M, I, L EC-760ZP-V/M, L EC-760P-V/M, L	5
SHF-020	70100143067	Hard and transparent	9.8	7.0	EG-760Z EC-740T/M, L	5
SHF-035	70100139658	Hard and transparent	10.8	7.0	EG-760CT EC-760P-V/M, L	5
SHF-045	70100141234	Hard and transparent	11.5	7.0	EC-760R-V/M, I, L	5
SHF-050	70100139656	Hard and transparent	12.2	7.0	EC-760ZP-V/M, L	5
SHF-055	70100139657	Hard and transparent	13.2	7.0	EC-760Z-V/M, L	5



SHS / M / L / LL



SHM-B / L-B



SHF

* Manufactured by Top Corporation, Japan. Not for sale in Canada.



CLUTCHCUTTER



THE 3-IN-1 ESD TOOL FOR VARIOUS TECHNIQUES

The ClutchCutter is a well proven endoscopic mucosal dissection tool that can enable the user to grasp, and electrically dissect and coagulate the mucosa of the upper and lower GI tract. In procedures that need to be performed perpendicular to the muscular layer, the ClutchCutter makes it possible to grasp, lift up and incrementally dissect the tissue.

ClutchCutter



**TOOTHED JAWS TO GRIP
THE MUCOSA EFFICIENTLY**

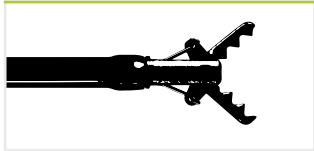
**ROTATABLE DISTAL JAWS FOR
A PRECISE LESION APPROACH**

**INSULATED OUTER EDGE TO REDUCE
RISK OF DAMAGING LOCAL TISSUE**

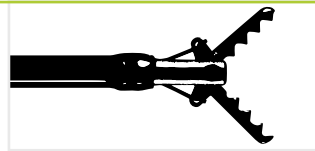
CLUTCH CUTTER ESD KNIFE



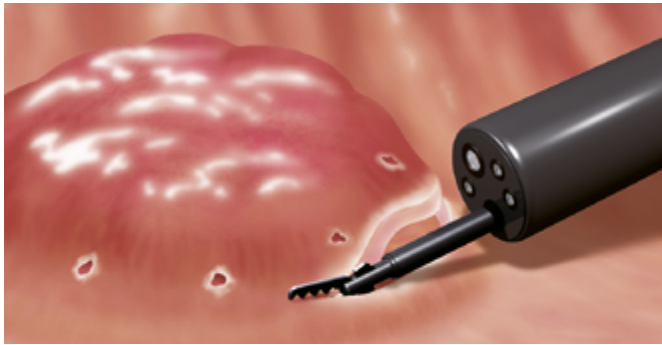
Model	Material code	Characteristics	Identifier	Knife length (mm)	Working length (mm)	Ø Working channel (mm)
DP2618DT - 35 -	16444210	ESD Scissor	- 35 -	3.5	1,800	2.8 or more
DP2618DT - 50 -	16444222	ESD Scissor	- 50 -	5.0	1,800	2.8 or more



DP2618DT -35-: 3.5 mm jaw length



DP2618DT -50-: 5.0 mm jaw length



1. Incision

3-in-1 ability

All stages of ESD can be performed with this 3-in-1 tool, from marking to making incisions and coagulating.



2. Dissection



3. Coagulation



FLUSHKNIFE



FlushKnife **NS**

FlushKnife **BTs**

ENHANCED USABILITY IDEAL FOR ALL PHYSICIANS

One knife covers everything from marking (coagulation), dissection to arrest of bleeding. The high versatility of this knife improves the efficiency of the procedure by reducing the exchange of instruments during the procedure.

THINNER SHEATH FOR ENHANCED SUCTION PERFORMANCE¹

EXCELLENT MANOEUVRABILITY AND STABILITY²

FLUID SUPPLY CAPABILITY WITH WATER PUMP JW-3

1. Due to tapered catheter design between distal section and handle to increase working channel lumen.
2. Due to increased catheter diameter on the distal section to secure stable position in the working channel.

FLUSHKNIFE BTS



FlushKnife BTS has a ball tip which touches a wider range of tissue and supports effective coagulation.

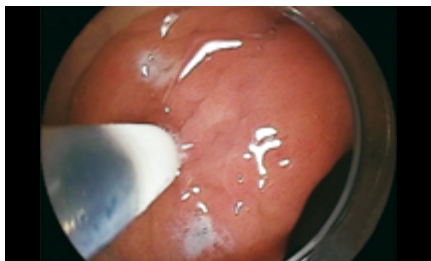
Model	Material code	Characteristics	Identifier	Colour code	Knife length (mm)	Working length (mm)	Ø Working channel (mm)
DK2620JI-B15-	16659607	Ball tip, Slim Type	- B15 -	Green	1.5	2,000	2.8 or more
DK2620JI-B20-	16659619		- B20 -	Blue	2.0		
DK2620JI-B25-	16659621		- B25 -	Yellow	2.5		
DK2620JI-B30-	16659633		- B30 -	Black	3.0		
DK2623JI-B15-	16659669	Ball tip, Long slim type	- B15 -	Green	1.5	2,300	2.8 or more
DK2623JI-B20-	16659671		- B20 -	Blue	2.0		

FLUSHKNIFE NS

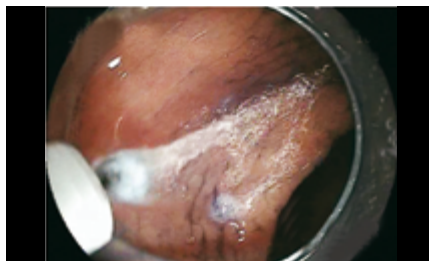


FlushKnife NS has a slim needle shaped tip.

Model	Material code	Characteristics	Identifier	Colour code	Knife length (mm)	Working length (mm)	Ø Working channel (mm)
DK2620JI-N10-	16659554	Needle tip, Slim Type	- N10 -	White	1.0	2,000	2.8 or more
DK2620JI-N15-	16659566		- N15 -	Green	1.5		
DK2620JI-N20-	16659578		- N20 -	Blue	2.0		
DK2620JI-N25-	16659580		- N25 -	Yellow	2.5		
DK2620JI-N30-	16659592		- N30 -	Black	3.0		
DK2623JI-N15-	16659645	Needle tip, Long slim type	- N15 -	Green	1.5	2,300	2.8 or more
DK2623JI-N20-	16659657		- N20 -	Blue	2.0		



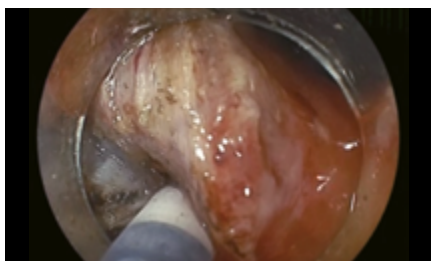
1. Marking (coagulation)



2. Water jet



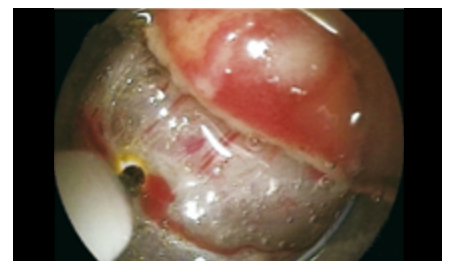
3. Mucosal incision



4. Submucosal dissection



5. Submucosal supply



6. Coagulation

Recommended applications

Diameter	1 mm	1.5mm	2mm	2.5mm	3mm
Oesophagus	○	◎	◎	△	△
Stomach	○	◎	◎	◎	○
Colon	○	◎	◎	△	△

◎ Best indication ○ Possible Use △ Indicated in certain cases

Please note: Examples of the suitable protruding lengths are suggested by Takashi Toyonaga M.D. of Kobe University Hospital. A physician must take into consideration each particular condition of the area or lesion to be dissected when selecting a protruding knife length.



TRACMOTION



PRECISE MOVEMENT, FASTER PROCEDURES

To simplify the lesion extraction process, Fujifilm has developed the TRACMOTION traction device for ESD. It is designed to potentially facilitate enhanced visualisation. It is expected to simplify the lesion excision process to allow for greater control and manoeuvrability during ESD procedures.

TRACMOTION is equipped with 360° rotatable jaws, enabling easy grasping and re-grasping of large lesions.



TRACMOTION

360° ROTABLE JAWS

NO LOCKING MECHANISM NEEDED

POTENTIAL FOR BETTER VISUALISATION

SINGLE OPERATOR CAPABILITY

TRACMOTION SINGLE OPERATOR ESD TRACTION DEVICE



Model	Material code	Ø Outer, insertion portion (mm)	Working length (mm)	Compatible endoscope
GF3612RT	16747076	3.6	1,260	EI-740D/S and dual channel endoscopes with 3.7 mm minimum instrument channel diameter and 1,030 mm working length



GF3612RT

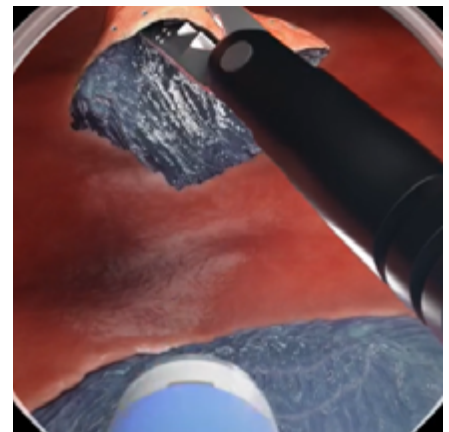
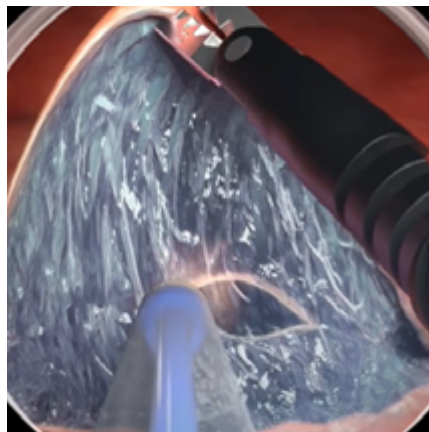
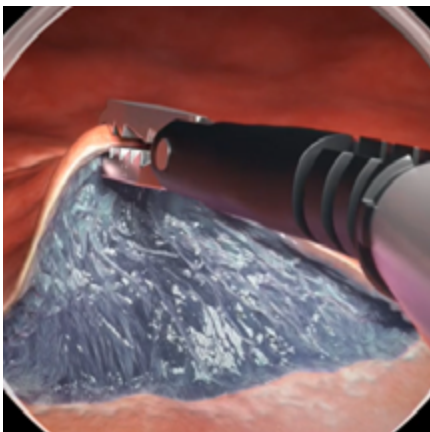


Compatibility with dual channel endoscopes

TRACMOTION is designed to work simultaneously and unobtrusively with an ESD knife using a dual channel endoscope. It is compatible with the Fujifilm EI-740D/S dual channel endoscope as well as other dual channel endoscopes that have one 3.7mm (or larger) instrument channel and a working length of 1,260 mm. With TRACMOTION, ESD also is expected to be performed in retroflexion to further enhance visualisation in challenging anatomy.

Simplifying ESD

With TRACMOTION, an endoscopist uses simple single-hand movements to control the distal end of the product, independent of the endoscope's movement. TRACMOTION can hold tissue during ESD without complicated locking mechanisms, potentially adding efficiency during this advanced procedure. In addition, performing ESD with TRACMOTION is expected to allow for en bloc extraction while reducing the amount of lifting agent, the number of device exchanges, and the procedure time. As an intuitive retraction tool, TRACMOTION simplifies the lesion extraction process, and offers the potential to endoscopists to reduce their time in both learning and performing ESD procedures.





JW-3 WATER PUMP



Advanced piping technology enables water flow to be quickly stopped. The one litre water bottle enables prolonged water use and minimises the need for constant refilling.

Water jet system and rotatable water supply port

The water jet system keeps the tip of the knife clean by washing off debris and lesion tissue adhering to the tip, thereby maintaining the sharpness of the knife throughout the treatment. The rotatable water supply port allows comfortable usage of both tube and syringe connection.



Design Award Winner
JW-3 Water Pump



reddot winner 2022



DESIGN
AWARD
2022

FOR INFECTION PREVENTION AND SAFETY



Tip of JT-3DT to connection to saline bag

Autoclavable tubes and water tank, disposable tubes

Both tubes (JT-3RC, JT-3RC2, and JT-3RW) and water tank are autoclavable for effective sterilisation and are re-usable. In addition, sterilised disposable tube (JT-3DC, JT-3DW, and JT-3DT) can be selected in view of infection management.

A line-up for therapeutic device (FlushKnife Slim: DK2620JI and DK2623JI) connection tube capable of submucosal supply

JT-3DT, designed for therapeutic device (FlushKnife Slim: DK2620JI and DK2623JI) is a disposable tube that connects to a saline bag via a port connector.

By combining this tube with FlushKnife Slim: DK2620JI and DK2623JI, it's possible to supply saline solution into the submucosal layer during ESD treatment.

For safety use, to avoid human error

If the cover of the pump head is opened during operation, operation is automatically stopped to protect users from injuries and accidents. The tube detector automatically recognises which tube is in use. In consideration of safety use, the maximum flow rate is set for each tube. During continuous flow, the water supply is automatically stopped after a set duration for each type of detected tube, thus avoiding an incidence of human error.

Max. water flow rate and automatic cut-off timer

Tube-Typ	Max. water flow rate	Automatic cut-off timer
A: Instrument channel tube	840 ml/min.	approx. 20 seconds
B: Water jet tube	220 ml/min.	approx. 20 seconds
C: Disposable therapeutic tube	209 ml/min.	approx. 8 seconds

WATER PUMP ACCESSORIES

Product name	Material code	Where to use	Characteristics	Total tube length (mm)	Unit
JT-3RC Instrument channel tube	16642836	Instrument channel (mode A)	Suction/irrigation tubing, reusable	2,230	1
JT-3RC2 Instrument channel-joint tube	16642850	Instrument channel (mode A)	Suction/irrigation tubing, reusable	195	5
JT-3DC Disposable instrument channel tube	16642862	Instrument channel (mode A)	Endoscopic insufflation tubing set, single-use	2,065	10
JT-3RW Water jet tube	16642848	Water jet (mode B)	Suction/irrigation tubing, reusable	1,340 Luer connector	2
JT-3DW Disposable water jet tube	16642874	Water jet (mode B)	Endoscopic insufflation tubing set, single-use	1,330 Luer connector	10
JT-3DT Disposable therapeutic tube	16642886	Therapeutic device (mode C)	Endoscopic insufflation tubing set, single-use	3,350 Luer connector	10
WT-3JW Water tank	16642824	Water tank	Surgical irrigation pump		2



JT-3RC



JT-3RC2



JT-3DC



WT-3JW



JT-3RW



JT-3DW



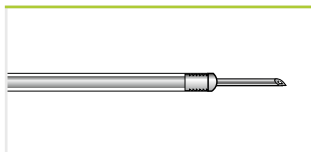
JT-3DT

MANTA INJECTION NEEDLES*



Manta ensures reliable retraction and extension of the needle, even in acutely angulated device positions, and prevents damage to the working channel. Enhanced kink-resistance and single handed operation provide for ease of use.

Product code	Material code	Characteristics	Ø Needle Needle length (mm)	Length (mm)	Ø Working channel (mm)	Unit
INJ1-A3-05-5-18-240	70100146666	Latching mechanism, distal needle guide, suitable with Histoacryl	0.5 (25 Gauge) 5	2,400	2.0	5
INJ1-A3-07-5-18-240	70100146657	Latching mechanism, distal needle guide, suitable with Histoacryl	0.7 (23 Gauge) 5	2,400	2.0	5



INJ1-A3

* Manufactured by FUJIFILM medwork GmbH, Germany.



PURASTAT HAEMOSTAT

THIRD PARTY PRODUCT

PuraStat is a slightly viscous peptide solution which is approved to manage intraprocedural bleeding and reduce delayed bleeding (following ESD in the colon). When in contact with physiological fluids, the synthetic peptides self-assemble into a 3-dimensional matrix, resulting in effective haemostasis. PuraStat comes in a ready-to-use syringe. It is transparent, can be left in place and is suitable for use alongside other modalities, including coagulation and clips.

Product code	Material code	Characteristics	Unit
PURASTAT 1ml 621-034	70100152373	Haemostatic gel 1ml syringe	1
PURASTAT 3ml 621-035	70100152372	Haemostatic gel 3ml syringe	1
PURASTAT 5ml 621-036	70100152371	Haemostatic gel 5ml syringe	1
PURASTAT NOZZLE SYSTEM TYPE-E	70100153471	Haemostatic gel catheter	5

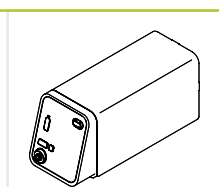


Regional availability may vary, please contact your local distribution partner for further information. PuraStat is a trademark for 3-D Matrix.

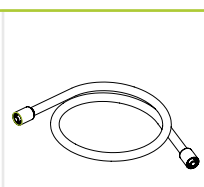
GW-100 CO₂ INSUFFLATOR

Fast resorption of insufflated CO₂ for patient friendly examinations

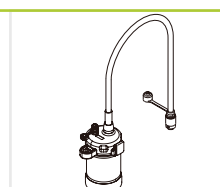
- Direct connection to the hospitals' medical CO₂ pipeline as well as to medical CO₂ cylinder
- Easy-to-use CO₂ flow rate switching function and compact design
- 2 controlled flow rate settings



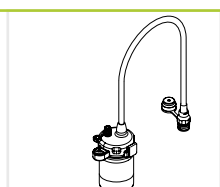
GW-100 Main Unit



CT-11G Gas Tube Standard Accessory



WT-04G Gas / Water Tank for 500 / 600 series endoscopes



WT-604G Water Tank for the ELUXEO 700 series

Tube sets for the connection of GW-100 to the medical gas pipeline and medical gas cylinders are available.

POLYPECTOMY



CROSS SNARE ZERO | RESECTION MASTER | MANTA | OCTOPUS | FLAMINGO

Polypectomy Snares	65
Injection Needles	71
Foreign Body Retrieval Nets	73
Foreign Body Forceps	75
Foreign Body Protection Cap	75
Polyp Traps	76
Spray Catheters	77
Haemostat	77
Cytology Brushes	78
Examination Pants	78
Buried Bumper Therapy	79



CROSS SNARE ZERO



COLD POLYP RESECTION IN A NEW DIMENSION

Less effort, perfect cutting performance – that's what CrossSnare ZERO offers you thanks to its unique reinforced spiral tube design.

Equipped with extra thin cutting wire and available in two different sizes, CrossSnare ZERO is the perfect choice for polyps up to 9 mm and supports you optimally in implementing the ESGE guideline*.

PERFECT RESECTION THANKS TO UNIQUE TUBE DESIGN

MULTIPLE SNARE DIAMETERS FOR DIMINUTIVE POLYPS

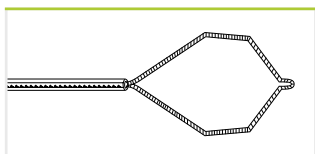
OPTIMAL FOR THE IMPLEMENTATION OF THE ESGE GUIDELINE*

* Ferlitsch Monika et al.: Colorectal polypectomy and endoscopic mucosal resection (EMR): European Society of Gastrointestinal Endoscopy (ESGE) Clinical Guideline, Endoscopy 2017.

CROSS SNARE ZERO POLYPECTOMY SNARES* for cold snaring



Product code	Material code	Characteristics	Ø Snare (mm)	Ø Snare wire (mm)	Length (mm)	Ø Working channel (mm)	Unit
POL1-Z2-07-23-220	70100147742	Kite, CWT	7	0.29	2,200	2.8	10
POL1-Z2-12-23-220	70100147743	Kite, CWT	12	0.29	2,200	2.8	10

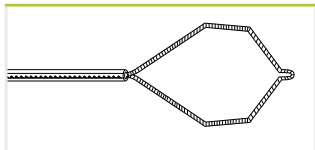


POL1-Z2

CROSS SNARE HYBRID POLYPECTOMY SNARES* for cold & hot snaring



Product code	Material code	Characteristics	Ø Snare (mm)	Ø Snare wire (mm)	Length (mm)	Ø Working channel (mm)	Unit
POL1-X1-10-23-220-OL	70100146804	Kite, CWT	10	0.39	2,200	2.8	10
POL1-X1-15-23-220-OL	70100146758	Kite, CWT	15	0.39	2,200	2.8	10



POL1-X1

More than just a cold snare – a hybrid comprising HOT and COLD

Over 90 % of all polyps are smaller than 10 mm. Especially a number of small, flat lesions in the caecum or right colon constitute special challenges for the instrumentation. CrossSnare is the first hybrid snare to have been specially developed for the majority of polyps of clinical relevance in terms of ablation.

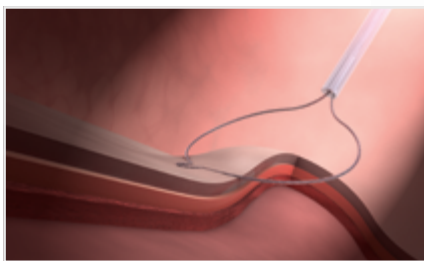
The large opening angle, even if the snare is partially retracted, ensures optimal snare adjustment to match the size of the polyps between 3 mm and 15 mm. Compacted Wire Technology provides tissue-sparing cutting properties – both with and without HF current.



Supports efficient polypectomies



Large opening angle, even if the snare is partially retracted.



Compacted Wire Technology combines the benefits of a monofilament cutting wire with those of a braided cutting wire for a precise and controlled exploration.

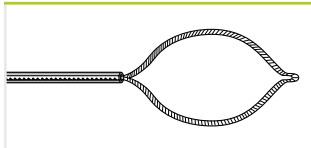
* Manufactured by FUJIFILM medwork GmbH, Germany.



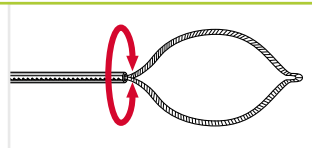
POLYPECTOMY SNARES* for hot snaring



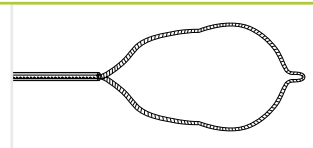
Product code	Material code	Characteristics	Ø Snare (mm)	Ø Snare wire (mm)	Length (mm)	Ø Working channel (mm)	Unit
POL1-B1-30-18-260-OL	70100146543	Oval, CWT	30	0.39	2,600	2.0	10
POL1-B1-10-23-220-OL	70100146684	Convex, CWT	10	0.39	2,200	2.8	10
POL1-B1-10-23-260-OL	70100147822	Convex, balloon enteroscopy	10	0.39	2,600	2.8	10
POL1-B1-15-23-220-OL	70100146542	Convex, CWT	15	0.39	2,200	2.8	10
POL1-B1-15-23-260-OL	70100146685	Convex, balloon enteroscopy	15	0.39	2,600	2.8	10
POL1-B1-20-23-220-OL	70100146695	Convex, CWT	20	0.39	2,200	2.8	10
POL1-B1-20-23-260-OL	70100147810	Convex, balloon enteroscopy	20	0.39	2,600	2.8	10
POL1-B1-30-23-220-OL	70100146586	Convex, CWT	30	0.39	2,200	2.8	10
POL1-B1-30-23-260-OL	70100146712	Convex, balloon enteroscopy	30	0.39	2,600	2.8	10
POL1-D1-30-23-220-OL	70100146813	Convex, combi, CWT	15/30	0.39	2,200	2.8	10
POL1-K1-25-23-220-OL	70100146726	Asymmetrical, CWT	25	0.39	2,200	2.8	10
POL1-B7-10-23-220-OL	70100146697	Oval, braided wire	10	0.45	2,200	2.8	10
POL1-B7-15-23-220-OL	70100146626	Oval, braided wire	15	0.45	2,200	2.8	10
POL1-B7-20-23-220-OL	70100146698	Oval, braided wire	20	0.45	2,200	2.8	10
POL1-B7-30-23-220-OL	70100146659	Oval, braided wire	30	0.45	2,200	2.8	10
POL1-B8-10-23-220-OL	70100146627	Oval, rotatable, braided wire	10	0.45	2,200	2.8	10
POL1-B8-15-23-220-OL	70100146628	Oval, rotatable, braided wire	15	0.45	2,200	2.8	10
POL1-B8-22-23-220-OL	70100146675	Oval, rotatable, braided wire	22	0.45	2,200	2.8	10
POL1-B8-30-23-220-OL	70100146570	Oval, rotatable, braided wire	30	0.45	2,200	2.8	10
POL1-F1-30-23-220-OL	70100146740	Hexagonal, braided wire	30	0.45	2,200	2.8	10



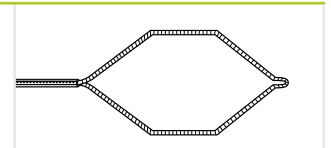
POL1-B1 / B7



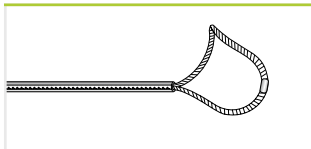
POL1-B8



POL1-D1



POL1-F1



POL1-K1

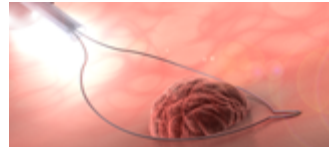
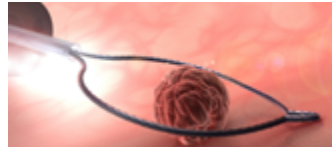
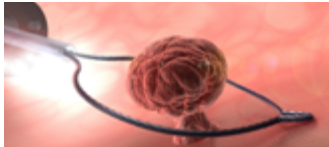
* Manufactured by FUJIFILM medwork GmbH, Germany.

PEDUNCULATED LESION

SESSILE LESION

FLAT LESION, SLIGHTLY RAISED

FLAT LESION

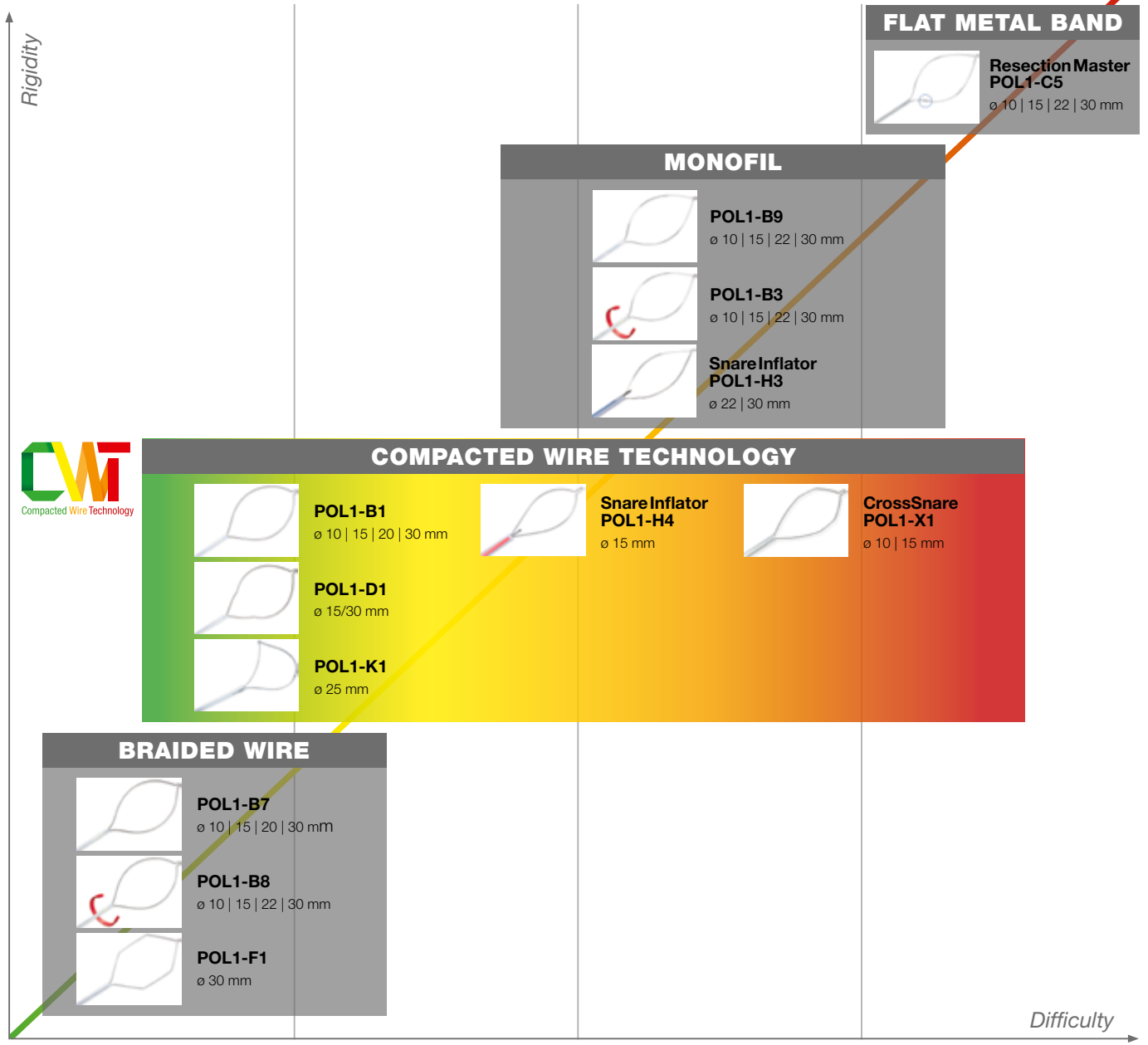


Coagulation effect: high

Coagulation effect: medium

Coagulation effect: low

Coagulation effect: low



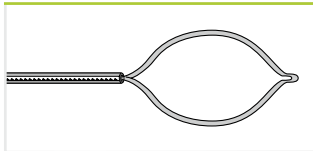
1 Thermal tissue damage 2 Mucosa 3 Submucosa 4 Muscularis propria



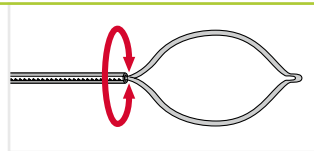
POLYPECTOMY SNARES*



Product code	Material code	Characteristics	Ø Snare (mm)	Ø Snare wire (mm)	Length (mm)	Ø Working channel (mm)	Unit
POL1-B9-10-23-220-OL	70100146687	Oval, monofil	10	0.25	2,200	2.8	10
POL1-B9-15-23-220-OL	70100146603	Oval, monofil	15	0.25	2,200	2.8	10
POL1-B9-22-23-220-OL	70100146571	Oval, monofil	22	0.25	2,200	2.8	10
POL1-B9-30-23-220-OL	70100146694	Oval, monofil	30	0.25	2,200	2.8	10
POL1-B3-10-23-220-OL	70100146624	Oval, rotatable, monofil	10	0.25	2,200	2.8	10
POL1-B3-15-23-220-OL	70100146604	Oval, rotatable, monofil	15	0.25	2,200	2.8	10
POL1-B3-22-23-220-OL	70100146625	Oval, rotatable, monofil	22	0.25	2,200	2.8	10
POL1-B3-30-23-220-OL	70100146686	Oval, rotatable, monofil	30	0.25	2,200	2.8	10



POL1-B9

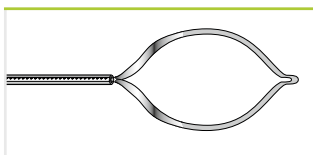


POL1-B3

RESECTION MASTER POLYPECTOMY SNARES* for EMR



Product code	Material code	Characteristics	Ø Snare (mm)	Length (mm)	Ø Working channel (mm)	Unit
POL1-C5-10-23-220-OL	70100146793	Oval, flat metal band	10	2,200	2.8	10
POL1-C5-15-23-220-OL	70100146802	Oval, flat metal band	15	2,200	2.8	10
POL1-C5-22-23-220-OL	70100146803	Oval, flat metal band	22	2,200	2.8	10
POL1-C5-30-23-220-OL	70100146801	Oval, flat metal band	30	2,200	2.8	10



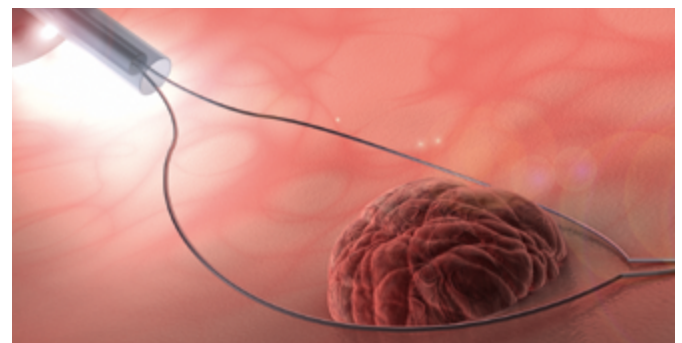
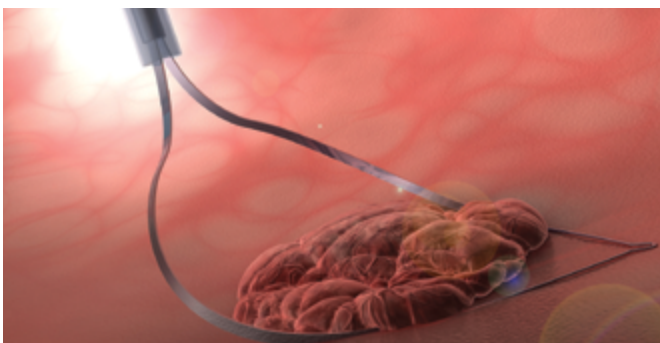
POL1-C5

Figure: POL1-C5-22-23-220-OL

Ideal resection thanks to an optimised hold on the tissue

Figure: POL1-B9-15-23-220-OL

Gentle tissue coagulation and controlled cut

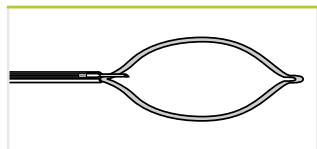


* Manufactured by FUJIFILM medwork GmbH, Germany.

SNARE INFLATOR POLYPECTOMY SNARES* with integrated injection needle



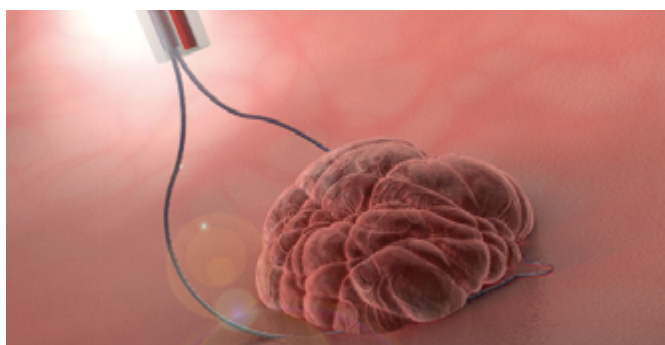
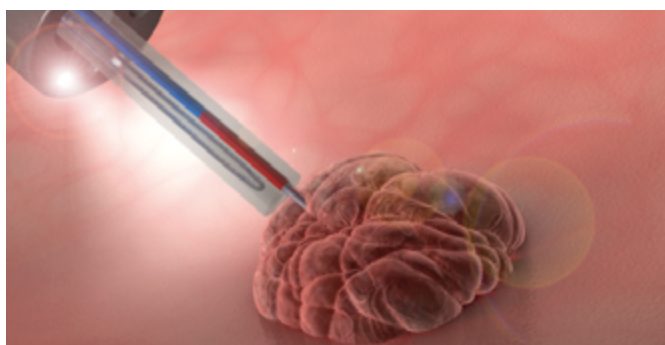
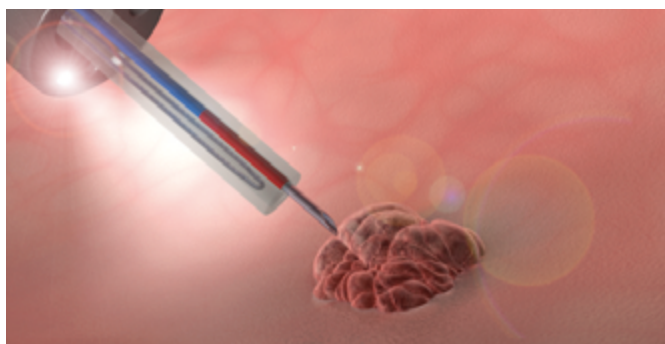
Product code	Material code	Characteristics	Ø Snare (mm)	Needle length (mm)	Ø Snare wire (mm)	Length (mm)	Ø Working channel (mm)	Unit
POL1-H4-15-27-230-OL	70100146793	Oval, CWT	15	5	0.335	2,300	3.2	5
POL1-H3-22-27-230-OL	70100146802	Oval, monofil	22	5	0.25	2,300	3.2	5
POL1-H3-30-27-230-OL	70100146803	Oval, monofil	30	5	0.25	2,300	3.2	5



POL1-H3 / H4

Figure: POL1-H4-15-27-230-OL

Integrated injection needle, optimal for "Lift & Cut"



* Manufactured by FUJIFILM medwork GmbH, Germany.

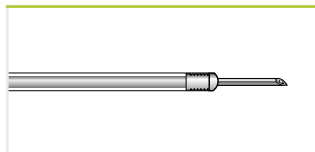


MANTA INJECTION NEEDLES*



Manta ensures reliable retraction and extension of the needle, even in sharply angulated device positions, and prevents feared damage to the working channel. Maximum kink-resistance and single handed operation ease the application.

Product code	Material code	Characteristics	Ø Needle Needle length (mm)	Length (mm)	Ø Working channel (mm)	Unit
INJ1-A3-05-5-18-240	70100146666	Latching mechanism, distal needle guide, suitable with Histoacryl	0.5 (25 Gauge) 5	2,400	2.0	5
INJ1-A3-07-5-18-240	70100146657	Latching mechanism, distal needle guide, suitable with Histoacryl	0.7 (23 Gauge) 5	2,400	2.0	5

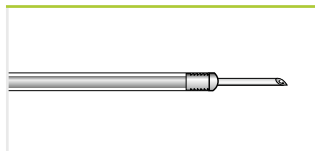


INJ1-A3

ICUS INJECTION NEEDLES*



Product code	Material code	Characteristics	Ø Needle Needle length (mm)	Length (mm)	Ø Working channel (mm)	Unit
INJ1-A1-05-5-18-180	70100146672	Latching mechanism, distal needle guide, suitable with Histoacryl	0.5 5	1,800	2.0	10
INJ1-A1-07-5-18-180	70100146611	Latching mechanism, distal needle guide, suitable with Histoacryl	0.7 5	1,800	2.0	10



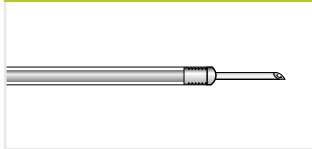
INJ1-A1

* Manufactured by FUJIFILM medwork GmbH, Germany.

ICUS² INJECTION NEEDLES*



Product code	Material code	Characteristics	Ø Needle Needle length (mm)	Length (mm)	Ø Working channel (mm)	Unit
INJ1-A2-05-3-23-230	70100147786	Latching mechanism, distal needle guide, suitable with Histoacryl	0.5 3	2,300	2.8	10
INJ1-A2-05-4-23-180	70100146693	Latching mechanism, distal needle guide, suitable with Histoacryl	0.5 4	1,800	2.8	10
INJ1-A2-05-4-23-230	70100146549	Latching mechanism, distal needle guide, suitable with Histoacryl	0.5 4	2,300	2.8	10
INJ1-A2-07-3-23-230	70100147814	Latching mechanism, distal needle guide, suitable with Histoacryl	0.7 3	2,300	2.8	10
INJ1-A2-07-4-23-180	70100146614	Latching mechanism, distal needle guide, suitable with Histoacryl	0.7 4	1,800	2.8	10
INJ1-A2-07-4-23-230	70100146671	Latching mechanism, distal needle guide, suitable with Histoacryl	0.7 4	2,300	2.8	10
INJ1-A2-07-5-23-180	70100146665	Latching mechanism, distal needle guide, suitable with Histoacryl	0.7 5	1,800	2.8	10
INJ1-A2-07-5-23-230	70100146615	Latching mechanism, distal needle guide, suitable with Histoacryl	0.7 5	2,300	2.8	10
INJ1-A2-09-5-23-180	70100146554	Latching mechanism, distal needle guide, suitable with Histoacryl	0.9 5	1,800	2.8	10
INJ1-A2-09-5-23-230	70100146598	Latching mechanism, distal needle guide, suitable with Histoacryl	0.9 5	2,300	2.8	10



INJ1-A2

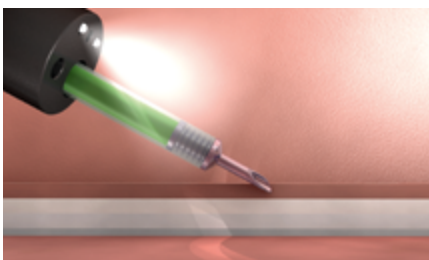


Figure: INJ1-A2-05-3-23-230

20% reduction** in friction for precision puncture



80% less effort** when administering injections



20% easier** piercing

** Compared to previous injection needles.

* Manufactured by FUJIFILM medwork GmbH, Germany.



OCTOPUS



HIGH VOLUME

There is no escape: The OCTOPUS retrieval net takes on polyps and foreign bodies. The sturdy structure of the frame ensures reliable removal.

Versatility in use, it can be used for several foreign bodies – due to its reservoir function. Direct rotatability and a high degree of flexibility facilitate the process.



FOR POLYPS & FOREIGN BODIES

STABLE FRAMED NET

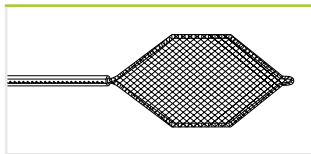
DIRECT ROTATABILITY*

*FOR1-N3-30-220

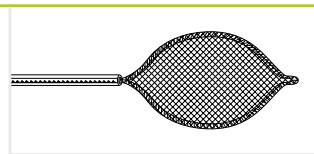
OCTOPUS FOREIGN BODY RETRIEVAL NET*



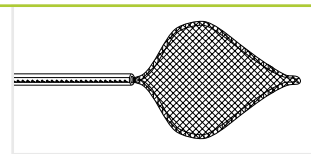
Product code	Material code	Characteristics	Volume (cm ³)	Length (mm)	Ø Working channel (mm)	Unit
FOR1-N1-20-180	70100146681	Hexagonal, framed, paediatric	3	1,800	2.0	5
FOR1-N1-30-220	70100146563	Oval, framed	6	2,200	2.8	5
FOR1-N1-40-220	70100146682	Reservoir function, framed	8	2,200	2.8	5
FOR1-N2-30-220	70100146654	Kite, framed	6	2,200	2.8	5
FOR1-N3-30-220	70100146607	Kite, framed, rotatable	6	2,200	2.8	5



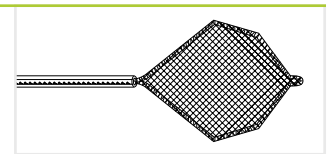
FOR1-N1-20



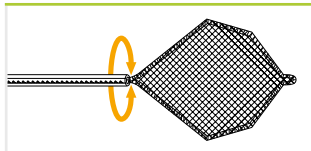
FOR1-N1-30



FOR1-N1-40

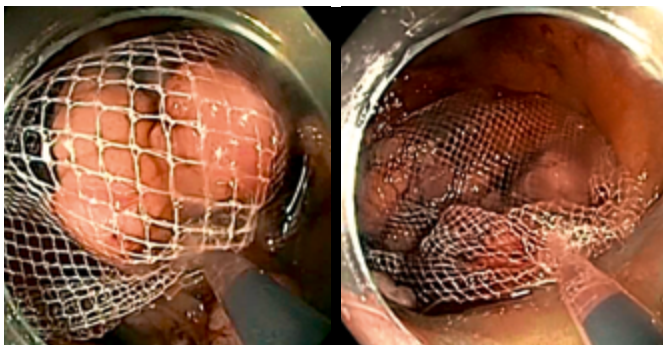


FOR1-N2-30



FOR1-N3-30

SUPPORTING SAFE FOREIGN BODY RETRIEVALS



Owing to a new reservoir design OCTOPUS enables easy and reliable recovery of multiple objects simultaneously. Whereby 1:1 rotatability facilitates manoeuvring during foreign body recovery. The extremely sturdy net reliably maintains its position and does not slip.

* Manufactured by FUJIFILM medwork GmbH, Germany.



FOREIGN BODY FORCEPS*



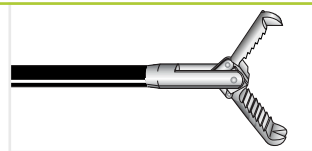
Product code	Material code	Characteristics	Opening width (mm)	Ø Tube (mm)	Length (mm)	Ø Working channel (mm)	Unit
FOR1-A1-23-230	70100146637	Alligator, metal spring, coated	9	2.3	2,300	2.8	5
FOR1-A2-23-230	70100146653	Hybrid jaw configuration alligator/ rat tooth, metal spring, coated	9	2.3	2,300	2.8	10
FOR1-A2-23-260	70100146565	Hybrid jaw configuration alligator/ rat tooth, metal spring, coated balloon enteroscopy	8	2.3	2,300	2.8	5
FOR1-P1-18-230	70100146585	Pelican, coated, paediatric	9	1.8	2,300	2.0	5
FOR1-P1-23-230	70100146638	Pelican, coated	15.5	2.3	2,300	2.8	5
FOR1-H3-23-230	70100146566	Three-arm grasping forceps, PTFE catheter		2.3	2,300	2.8	5



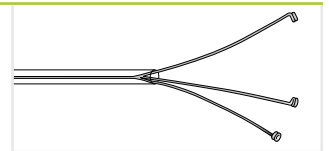
FOR1-A1



FOR1-A2



FOR1-P1



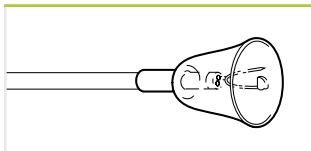
FOR1-H3

FOREIGN BODY PROTECTION CAP**

THIRD PARTY PRODUCT



Product code	Material code	Characteristics	Unit
WS0420000	70100146961	Foreign body protection cap	10



WS0420000

Regional availability may vary, please contact your local distribution partner for further information.

* Manufactured by FUJIFILM medwork GmbH, Germany.

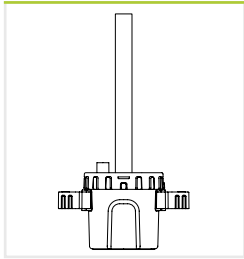
** Manufactured by Prince Medical SAS, France.

KOALA POLYP TRAPS*



The two removable strainers of the koala polyp trap facilitate easy removal of tissue specimens and therefore protect against contamination with biomaterial. The suction function is limitless throughout the procedure.

Product code	Material code	Characteristics	Unit
TRP1-S2	70100147772	2 integrated strainers, white	25
TRP1-S4	70100149546	2 integrated strainers, white 2 additional strainers, grey	25



TRP1-S2 / S4



Strainer

Minimised contamination risk

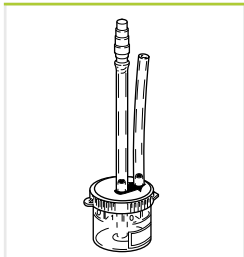
On account of the two chambers of the Koala it is no longer necessary to deposit a contaminated strainer outside the system. That reduces contamination with biomaterial, and hence the infection risk.

POLYP TRAPS**

THIRD PARTY PRODUCT



Product code	Material code	Characteristics	Unit
MIS1-POLYPTRAP	70100146707	4 chambers, connecting tubes to suction pump/endoscope	10
MIS1-POLYPTRAP 50	70100146556	4 chambers, connecting tubes to suction pump/endoscope	50



MIS1-Polytrap

* Manufactured by FUJIFILM medwork GmbH, Germany.

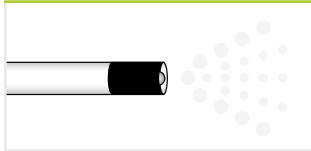
** Manufactured by PPI Médical, France.



SPRAY CATHETERS*



Product code	Material code	Characteristics	Length (mm)	Ø Working channel (mm)	Unit
SPE1-B6-18-120	70100146734	Spray catheter	1,200	2.0	10
SPE1-C6-18-220	70100146735	Spray catheter	2,200	2.0	10



SPE1-B6 / C6

PURASTAT HAEMOSTAT

THIRD PARTY PRODUCT



PuraStat is a slightly viscous peptide solution which is approved to manage intraprocedural bleeding and reduce delayed bleeding (following ESD in the colon). When in contact with physiological fluids, the synthetic peptides self-assemble into a 3-dimensional matrix, resulting in effective haemostasis. PuraStat comes in a ready-to-use syringe. It is transparent, can be left in place and is suitable for use alongside other modalities, including coagulation and clips.

Product code	Material code	Characteristics	Unit
PURASTAT 1ml 621-034	70100152373	Haemostatic gel 1ml syringe	1
PURASTAT 3ml 621-035	70100152372	Haemostatic gel 3ml syringe	1
PURASTAT 5ml 621-036	70100152371	Haemostatic gel 5ml syringe	1
PURASTAT NOZZLE SYSTEM TYPE-E	70100153471	Haemostatic gel catheter	5



Regional availability may vary, please contact your local distribution partner for further information. PuraStat is a trademark for 3-D Matrix.

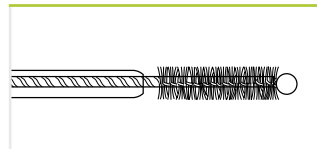
* Manufactured by FUJIFILM medwork GmbH, Germany.

CYTOLOGY BRUSHES*

THIRD PARTY PRODUCT



Product code	Material code	Characteristics	Ø Brush (mm)	Length (mm)	Ø Working channel (mm)	Unit
WS0373016	70100146972	Gastroscopy, handle, 1 lumen, distal protection ball	3.0	1,600	2.8	5
WS0373022	70100146980	Colonoscopy, handle, 1 lumen, distal protection ball	3.0	2,200	2.8	5

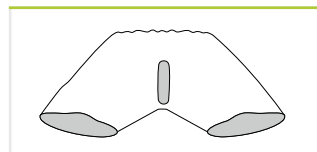


WS03

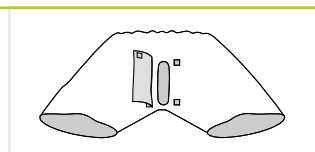
COLONOSCOPY EXAMINATION PANTS**



Product code	Material code	Characteristics	Unit
MIS1-Colo-Pants1	70100146618	Colonoscopy examination pants, dark blue, fleece, including elastic, slit, Bermuda (width 61cm/length 65cm)	100
MIS1-Colo-Pants	70100146617	Colonoscopy examination pants, dark blue, fleece, including elastic, slit with hook-and-loop cover, prolonged waistline, Bermuda (width 70cm/length 60cm)	100
MIS1-Colo-Pants-XXL	70100146555	Colonoscopy examination pants, dark blue, fleece, including elastic, slit with hook-and-loop cover, prolonged waistline, Bermuda (width 85cm/length 70cm)	10



MIS1-Pants1



MIS1-Pants / Pants-XXL

* Manufactured by Prince Medical SAS, France.

** Manufactured by FUJIFILM medwork GmbH, Germany.



FLAMINGO

CO-INVENTED BY PROF. DORMANN



**MULTIDIMENSIONAL CUTTING
FOR PRECISE EXCISION OF
THE RETAINING PLATE**

**ACCURATE POSITIONING
FACILITATES THE STAR-SHAPED
INCISION OF THE MUCOSA**

COMPLETE FLEXIBILITY

Inspired by nature, extremely versatile and effective: The FLAMINGO kit – a system to meet the therapeutic challenges of the buried bumper syndrome. A simple yet precise excision of the PEG's retaining plate, thanks to the unique cutting wire design, which allows multidimensional cutting.



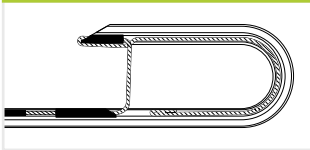
"The FLAMINGO kit has been uniquely designed to meet the particularly difficult circumstances of buried bumper therapy. I use the Flamingo Kit because I gain confidence over other techniques used and at the same time can significantly reduce the examination time."

Co-Inventor Prof. Dr. med. Arno Dormann, 08.02.2022

FLAMINGO KIT*

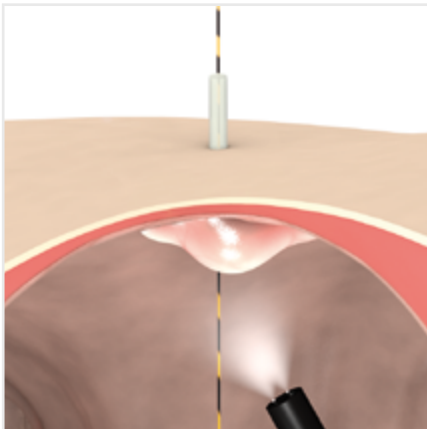


Product code	Material code	Characteristics	Cutting Length (mm)	Length (mm)	Accepted guide wire	Unit
POL3-P1-40-30-30	70100146767	1 Flamingo for 15Fr PEG probe, 2 lumen, CWT, rotatable 1 Foreign body forceps, alligator/rat tooth 1 guide wire, hydrophilic tip	6 / 10	300 2,300 1,200	.035"	1

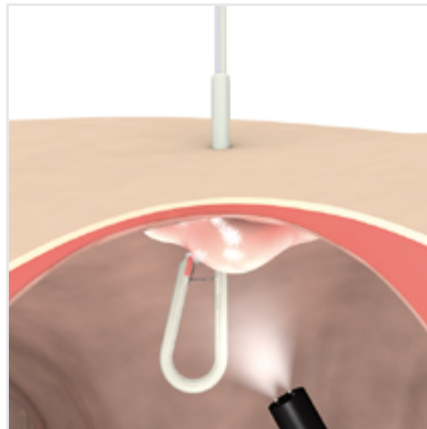


POL3-P1

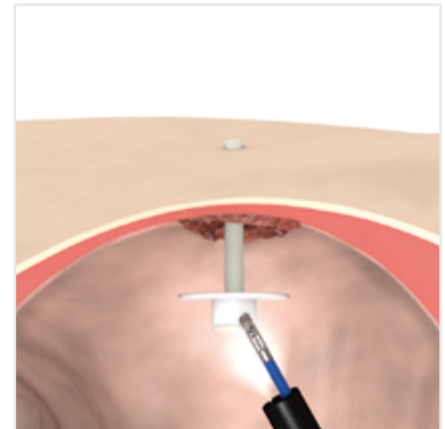
PUSH TECHNIQUE



Exploration with the PEG probe using a guide wire



Cutting the PEG probe free with the FLAMINGO by making a star-shaped incision



Removal of the PEG probe from the stomach with the foreign body forceps



* Manufactured by FUJIFILM medwork GmbH, Germany.

BIOPSY



ENDOBITE[®]

Biopsy Forceps

82

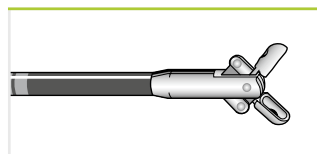


ENDO BITE² BIOPSY FORCEPS*

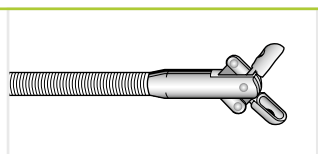


EndoBite² with mono pull wire ensures large sizes of sample material ideal for histological assessment because the cut surfaces are completely closed, even if the position of the endoscope is challenging. The mono pull wire prevents the branches from tilting and thus protects the working channel against wear and damage.

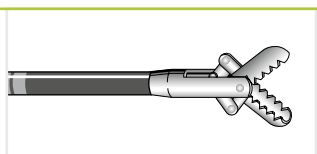
Product code	Material code	Characteristics	Ø Jaws (mm)	Length (mm)	Ø Working channel (mm)	Unit
BIO1-C4-18-180	70100146647	Oval jaws, coated, paediatrics	1.8	1,800	2.0	10
BIO1-C4-18-260	70100146662	Oval jaws, coated, balloon enteroscopy	1.8	2,600	2.0	10
BIO1-C4-23-180	70100146574	Oval jaws, mono pull wire, coated	2.3	1,800	2.8	10
BIO1-C4-23-230	70100146678	Oval jaws, mono pull wire, coated	2.3	2,300	2.8	10
BIO1-D4-23-180	70100146552	Oval jaws, mono pull wire, coated, spike	2.3	1,800	2.8	10
BIO1-D4-23-230	70100146593	Oval jaws, mono pull wire, coated, spike	2.3	2,300	2.8	10
BIO1-C3-23-180	70100146705	Oval jaws, mono pull wire	2.3	1,800	2.8	10
BIO1-C3-23-230	70100146591	Oval jaws, mono pull wire	2.3	2,300	2.8	10
BIO1-D3-23-180	70100146645	Oval jaws, mono pull wire, spike	2.3	1,800	2.8	10
BIO1-D3-23-230	70100146592	Oval jaws, mono pull wire, spike	2.3	2,300	2.8	10
BIO1-G4-23-180	70100146575	Alligator, mono pull wire, coated	2.3	1,800	2.8	10
BIO1-G4-23-230	70100146557	Alligator, mono pull wire, coated	2.3	2,300	2.8	10
BIO1-H4-23-180	70100146679	Alligator, mono pull wire, coated, spike	2.3	1,800	2.8	10
BIO1-H4-23-230	70100149148	Alligator, mono pull wire, coated, spike	2.3	2,300	2.8	10



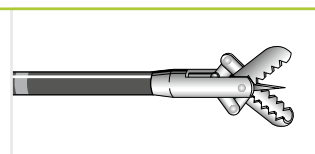
BIO1-C4



BIO1-C3



BIO1-G4

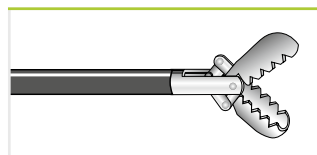


BIO1-H4

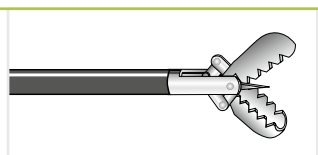
MACRO BIOPSY FORCEPS**

THIRD PARTY PRODUCT

Product code	Material code	Characteristics	Ø Jaws (mm)	Length (mm)	Ø Working channel (mm)	Unit
AMHBFJ2.8*2300	70100146977	Alligator, mono pull wire, coated, macro forceps	2.8	2,300	3.2	10
AMHBFK2.8*2300	70100146955	Alligator, mono pull wire, coated, macro forceps, spike	2.8	2,300	3.2	10



AMHBFJ2



AMHBFK2

* Manufactured by FUJIFILM medwork GmbH, Germany.

** Manufactured by Anrei medical (hz)co.,ltd., China.

FOREIGN BODY



OCTOPUS | FLAMINGO

Foreign Body Retrieval Nets	84
Foreign Body Forceps	86
Foreign Body Protection Cap	86
Buried Bumper Therapy	87



OCTOPUS



HIGH VOLUME

There is no escape: The OCTOPUS retrieval net takes on polyps and foreign bodies. The sturdy structure of the frame ensures reliable removal.

Versatility in use, it can be used for several foreign bodies – due to its reservoir function. Direct rotatability and a high degree of flexibility facilitate the process.



FOR POLYPS & FOREIGN BODIES

STABLE FRAMED NET

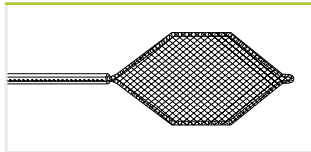
DIRECT ROTATABILITY*

*FOR1-N3-30-220

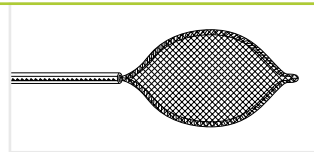
OCTOPUS FOREIGN BODY RETRIEVAL NET*



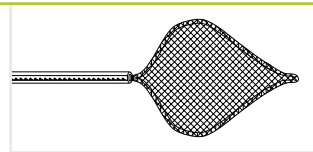
Product code	Material code	Characteristics	Volume (cm ³)	Length (mm)	Ø Working channel (mm)	Unit
FOR1-N1-20-180	70100146681	Hexagonal, framed, paediatric	3	1,800	2.0	5
FOR1-N1-30-220	70100146563	Oval, framed	6	2,200	2.8	5
FOR1-N1-40-220	70100146682	Reservoir function, framed	8	2,200	2.8	5
FOR1-N2-30-220	70100146654	Kite, framed	6	2,200	2.8	5
FOR1-N3-30-220	70100146607	Kite, framed, rotatable	6	2,200	2.8	5



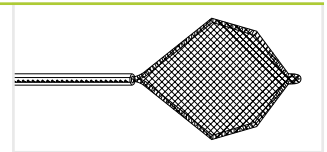
FOR1-N1-20



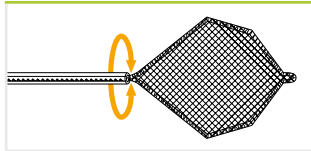
FOR1-N1-30



FOR1-N1-40

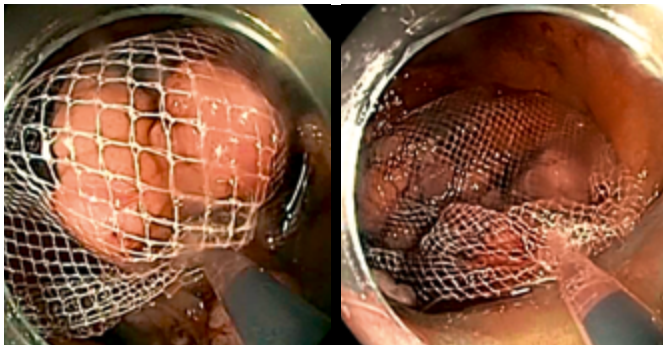


FOR1-N2-30



FOR1-N3-30

SUPPORTING SAFE FOREIGN BODY RETRIEVALS



Owing to a new reservoir design OCTOPUS enables easy and reliable recovery of multiple objects simultaneously. Whereby 1:1 rotatability facilitates manoeuvring during foreign body recovery. The extremely sturdy net reliably maintains its position and does not slip.

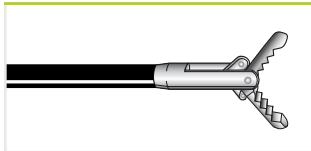
* Manufactured by FUJIFILM medwork GmbH, Germany.



FOREIGN BODY FORCEPS*



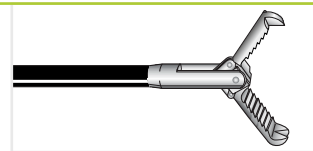
Product code	Material code	Characteristics	Opening width (mm)	Ø Tube (mm)	Length (mm)	Ø Working channel (mm)	Unit
FOR1-A1-23-230	70100146637	Alligator, metal spring, coated	9	2.3	2,300	2.8	5
FOR1-A2-23-230	70100146653	Hybrid jaw configuration alligator/ rat tooth, metal spring, coated	9	2.3	2,300	2.8	10
FOR1-A2-23-260	70100146565	Hybrid jaw configuration alligator/ rat tooth, metal spring, coated balloon enteroscopy	8	2.3	2,300	2.8	5
FOR1-P1-18-230	70100146585	Pelican, coated, paediatric	9	1.8	2,300	2.0	5
FOR1-P1-23-230	70100146638	Pelican, coated	15.5	2.3	2,300	2.8	5
FOR1-H3-23-230	70100146566	Three-arm grasping forceps, PTFE catheter		2.3	2,300	2.8	5



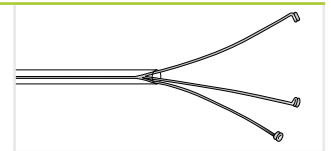
FOR1-A1



FOR1-A2



FOR1-P1



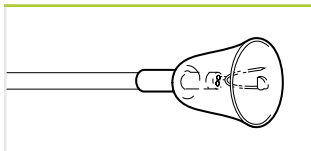
FOR1-H3

FOREIGN BODY PROTECTION CAP**

THIRD PARTY PRODUCT



Product code	Material code	Characteristics	Unit
WS0420000	70100146961	Foreign body protection cap	10



WS0420000

Regional availability may vary, please contact your local distribution partner for further information.

* Manufactured by FUJIFILM medwork GmbH, Germany.

** Manufactured by Prince Medical SAS, France.



FLAMINGO

CO-INVENTED BY PROF. DORMANN



**MULTIDIMENSIONAL CUTTING
FOR PRECISE EXCISION OF
THE RETAINING PLATE**

**ACCURATE POSITIONING
FACILITATES THE STAR-SHAPED
INCISION OF THE MUCOSA**

COMPLETE FLEXIBILITY

Inspired by nature, extremely versatile and effective: The FLAMINGO kit – a system to meet the therapeutic challenges of the buried bumper syndrome. A simple yet precise excision of the PEG's retaining plate, thanks to the unique cutting wire design, which allows multidimensional cutting.



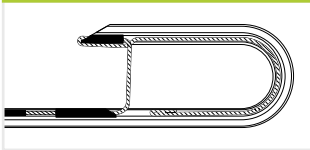
"The FLAMINGO kit has been uniquely designed to meet the particularly difficult circumstances of buried bumper therapy. I use the Flamingo Kit because I gain confidence over other techniques used and at the same time can significantly reduce the examination time."

Co-Inventor Prof. Dr. med. Arno Dormann, 08.02.2022

FLAMINGO KIT*

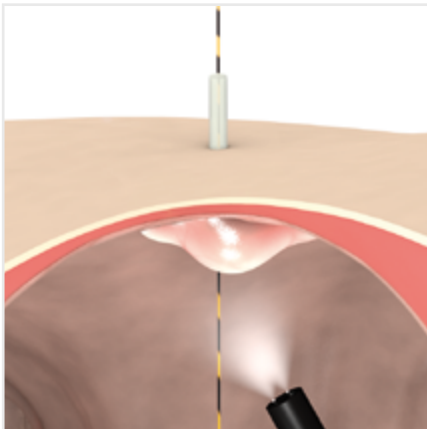


Product code	Material code	Characteristics	Cutting Length (mm)	Length (mm)	Accepted guide wire	Unit
POL3-P1-40-30-30	70100146767	1 Flamingo for 15Fr PEG probe, 2 lumen, CWT, rotatable 1 Foreign body forceps, alligator/rat tooth 1 guide wire, hydrophilic tip	6 / 10	300 2,300 1,200	.035"	1

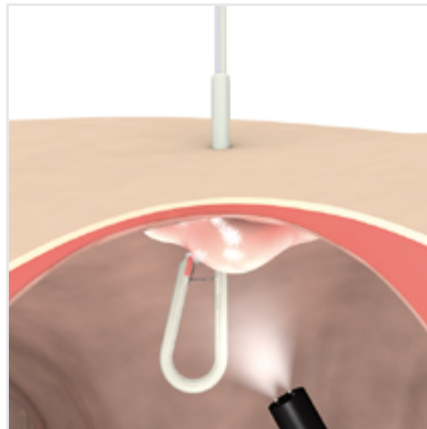


POL3-P1

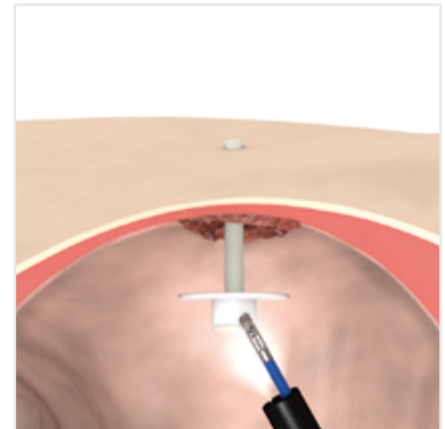
PUSH TECHNIQUE



Exploration with the PEG probe using a guide wire



Cutting the PEG probe free with the FLAMINGO by making a star-shaped incision

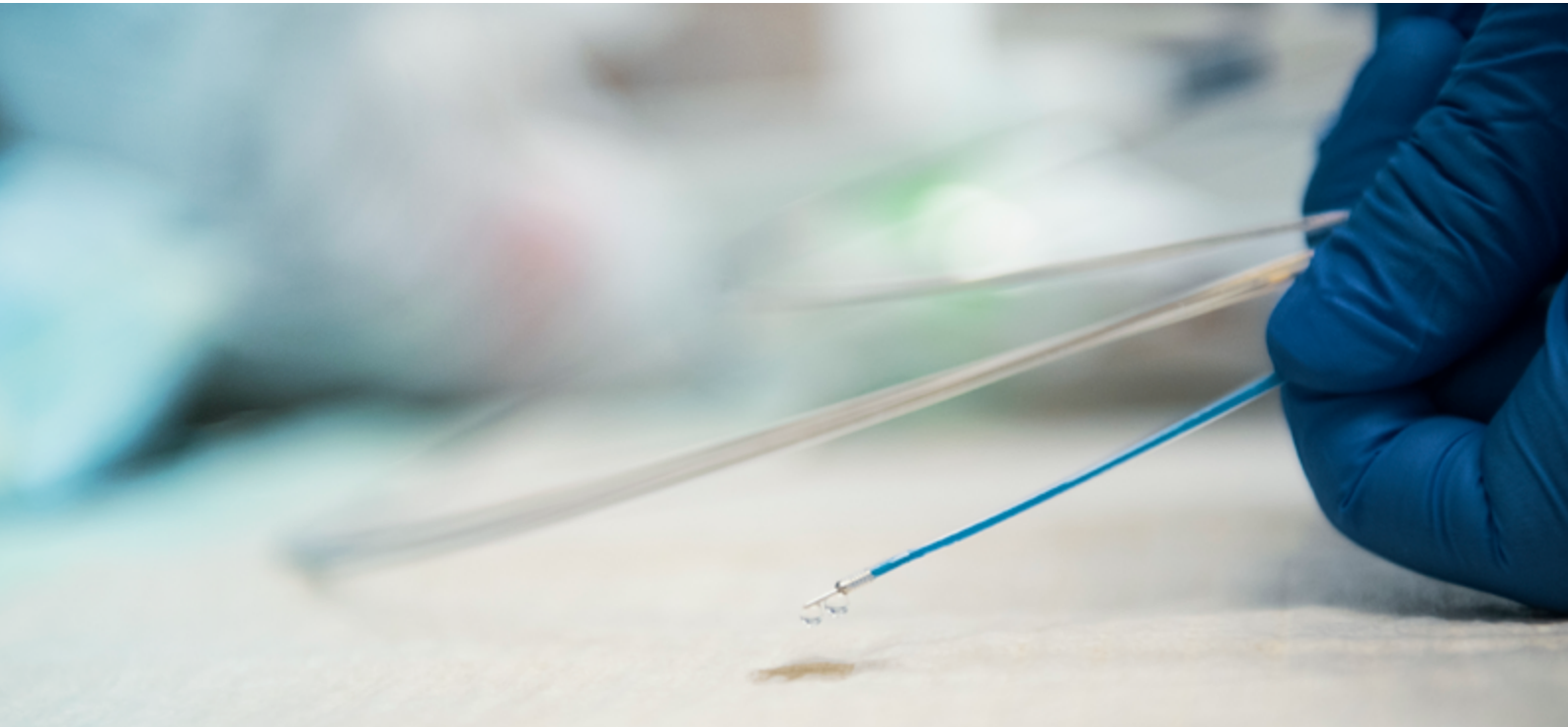


Removal of the PEG probe from the stomach with the foreign body forceps



* Manufactured by FUJIFILM medwork GmbH, Germany.

HAEMOSTASIS & LIGATION



MANTA | ICUS² | PURASTAT

Injection Needles	90
Haemostat	92

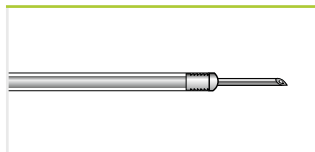


MANTA INJECTION NEEDLES*



Manta ensures reliable retraction and extension of the needle, even in sharply angulated device positions, and prevents feared damage to the working channel. Maximum kink-resistance and single handed operation ease the application.

Product code	Material code	Characteristics	Ø Needle Needle length (mm)	Length (mm)	Ø Working channel (mm)	Unit
INJ1-A3-05-5-18-240	70100146666	Latching mechanism, distal needle guide, suitable with Histoacryl	0.5 (25 Gauge) 5	2,400	2.0	5
INJ1-A3-07-5-18-240	70100146657	Latching mechanism, distal needle guide, suitable with Histoacryl	0.7 (23 Gauge) 5	2,400	2.0	5

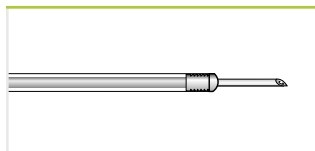


INJ1-A3

ICUS INJECTION NEEDLES*



Product code	Material code	Characteristics	Ø Needle Needle length (mm)	Length (mm)	Ø Working channel (mm)	Unit
INJ1-A1-05-5-18-180	70100146672	Latching mechanism, distal needle guide, suitable with Histoacryl	0.5 5	1,800	2.0	10
INJ1-A1-07-5-18-180	70100146611	Latching mechanism, distal needle guide, suitable with Histoacryl	0.7 5	1,800	2.0	10



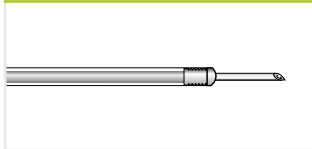
INJ1-A1

* Manufactured by FUJIFILM medwork GmbH, Germany.

ICUS² INJECTION NEEDLES*



Product code	Material code	Characteristics	Ø Needle Needle length (mm)	Length (mm)	Ø Working channel (mm)	Unit
INJ1-A2-05-3-23-230	70100147786	Latching mechanism, distal needle guide, suitable with Histoacryl	0.5 3	2,300	2.8	10
INJ1-A2-05-4-23-180	70100146693	Latching mechanism, distal needle guide, suitable with Histoacryl	0.5 4	1,800	2.8	10
INJ1-A2-05-4-23-230	70100146549	Latching mechanism, distal needle guide, suitable with Histoacryl	0.5 4	2,300	2.8	10
INJ1-A2-07-3-23-230	70100147814	Latching mechanism, distal needle guide, suitable with Histoacryl	0.7 3	2,300	2.8	10
INJ1-A2-07-4-23-180	70100146614	Latching mechanism, distal needle guide, suitable with Histoacryl	0.7 4	1,800	2.8	10
INJ1-A2-07-4-23-230	70100146671	Latching mechanism, distal needle guide, suitable with Histoacryl	0.7 4	2,300	2.8	10
INJ1-A2-07-5-23-180	70100146665	Latching mechanism, distal needle guide, suitable with Histoacryl	0.7 5	1,800	2.8	10
INJ1-A2-07-5-23-230	70100146615	Latching mechanism, distal needle guide, suitable with Histoacryl	0.7 5	2,300	2.8	10
INJ1-A2-09-5-23-180	70100146554	Latching mechanism, distal needle guide, suitable with Histoacryl	0.9 5	1,800	2.8	10
INJ1-A2-09-5-23-230	70100146598	Latching mechanism, distal needle guide, suitable with Histoacryl	0.9 5	2,300	2.8	10



INJ1-A2



Figure: INJ1-A2-05-3-23-230

- 20% reduction** in friction for precision puncture
- 80% less effort** when administering injections
- 20% easier** piercing



Proven reliable needle guidance

No matter whether it is a case of injection-supported polypectomy or haemostasis, permits precision injection thanks to easier piercing behaviour and smoother functioning. In future, have confidence in proven reliable needle guidance and thereby protect your working channel.

* Manufactured by FUJIFILM medwork GmbH, Germany.

** Compared to previous injection needles.



PURASTAT HAEMOSTAT

THIRD PARTY PRODUCT



PuraStat is a slightly viscous peptide solution which is approved to manage intraprocedural bleeding and reduce delayed bleeding (following ESD in the colon). When in contact with physiological fluids, the synthetic peptides self-assemble into a 3-dimensional matrix, resulting in effective haemostasis. PuraStat comes in a ready-to-use syringe. It is transparent, can be left in place and is suitable for use alongside other modalities, including coagulation and clips.

Product code	Material code	Characteristics	Unit
PURASTAT 1ml 621-034	70100152373	Haemostatic gel 1ml syringe	1
PURASTAT 3ml 621-035	70100152372	Haemostatic gel 3ml syringe	1
PURASTAT 5ml 621-036	70100152371	Haemostatic gel 5ml syringe	1
PURASTAT NOZZLE SYSTEM TYPE-E	70100153471	Haemostatic gel catheter	5



Regional availability may vary, please contact your local distribution partner for further information. PuraStat is a trademark for 3-D Matrix.

DILATION



Dilation Balloons

94

Insufflation Device

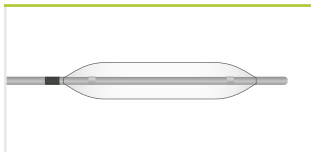
94



DILATION BALLOONS* for short & long wire technique



Product code	Material code	Characteristics	Ø Balloon (mm)	Length Balloon (mm)	Working length (mm)	Accepted guide wire	Ø Working channel (mm)	Unit
DIL1-A1-06-40-23-35	70100146636	2 radiopaque markings, tapered catheter (2.3/1.8 mm)	6	40	2,300	.035" ≥ 2,000 mm	2.8	2
DIL1-A1-08-40-23-35	70100146669	2 radiopaque markings, tapered catheter (2.3/1.8 mm)	8	40	2,300	.035" ≥ 2,000 mm	2.8	2
DIL1-A1-10-40-23-35	70100146663	2 radiopaque markings, tapered catheter (2.3/1.8 mm)	10	40	2,300	.035" ≥ 2,000 mm	2.8	2
DIL1-A1-12-60-23-35	70100146605	2 radiopaque markings, tapered catheter (2.3/1.8 mm)	12	60	2,300	.035" ≥ 2,000 mm	2.8	2
DIL1-A1-14-60-23-35	70100146664	2 radiopaque markings, tapered catheter (2.3/1.8 mm)	14	60	2,300	.035" ≥ 2,000 mm	2.8	2
DIL1-A1-16-60-23-35	70100146670	2 radiopaque markings, tapered catheter (2.3/1.8 mm)	16	60	2,300	.035" ≥ 2,000 mm	2.8	2
DIL1-A1-18-60-23-35	70100146667	2 radiopaque markings, tapered catheter (2.3/1.8 mm)	18	60	2,300	.035" ≥ 2,000 mm	2.8	2
DIL1-A1-20-60-23-35	70100146606	2 radiopaque markings, tapered catheter (2.3/1.8 mm)	20	60	2,300	.035" ≥ 2,000 mm	3.2	2



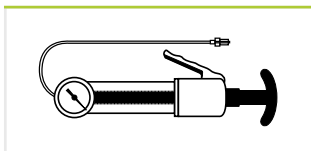
DIL1-A1

INSUFFLATION DEVICE**

THIRD PARTY PRODUCT



Product code	Material code	Characteristics	Unit
DIL1-B1-60	70100146584	60 ml volume, 12 atm maximum pressure, compatible with Dilation Balloons DIL1 range	1



DIL1-B1

* Manufactured by FUJIFILM medwork GmbH, Germany.

** Manufactured by Changzhou JIUHONG Medical Instrument Co., Ltd, China.

GUIDE WIRES



GPS WIRE

Guide Wires

96



GPS WIRE



ARRIVE SAFELY

The atraumatic tip of the GI Probing Scout ensures conservative exploration. The sturdy sheath reliably guides therapy instruments to their destination. A smooth transition between the hydrophilic tip and the coating enhances the precision control of your instruments.

In addition, handling is facilitated by the newly designed insertion aid.

PRECISE EXPLORATION

STABLE INSTRUMENT GUIDANCE

SMOOTH TRANSITION BETWEEN TIP AND COATING



GPS WIRE GUIDE WIRES* with hydrophilic tip



Product code	Material code	Characteristics	Diameter	Length (mm)	Unit
WIR1-S6-35-260	70100146742	Straight, Nitinol, insulated, green/white	.035"	2,600	5
WIR1-S6-35-450	70100146743	Straight, Nitinol, insulated, green/white	.035"	4,500	5
WIR1-J6-35-260	70100147764	J-tip, Nitinol, insulated, green/white	.035"	2,600	5
WIR1-J6-35-450	70100146828	J-tip, Nitinol, insulated, green/white	.035"	4,500	5



WIR1-S6

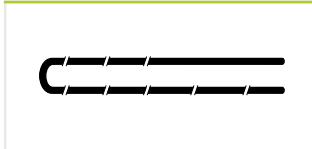


WIR1-J6

GUIDE WIRES*



Product code	Material code	Characteristics	Diameter	Length (mm)	Unit
WIR1-F7-35-260	70100146812	Straight, Nitinol, coated, extra stiff	.035"	2,600	2
WIR1-F7-35-400	70100146827	Straight, Nitinol, coated, extra stiff	.035"	4,000	2



WIR1-F7

* Manufactured by FUJIFILM medwork GmbH, Germany.

BALLOON ENTEROSCOPY



AXS_TOME | MANTA | ENDOBITE2

Sphincterotomes	99
ERCP-Catheter	99
Stone Extraction Baskets	100
Injection Needles	100
Biopsy Forceps	101
Polypectomy Snares	101
Guide Wire	101



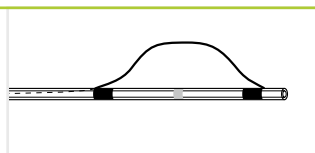
AXS_TOME SPHINCTEROTOMES* 2 lumen



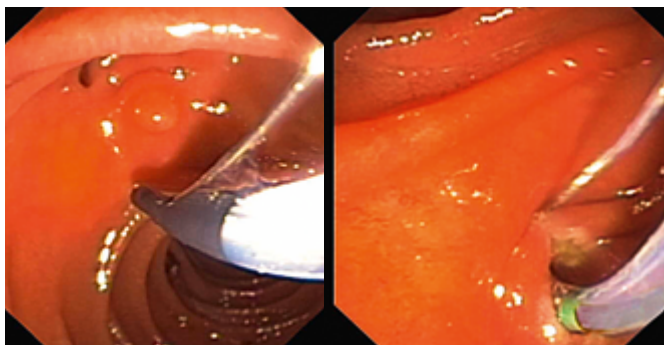
Product code	Material code	Characteristics	Cutting length (mm)	Accepted guide wire	Length (mm)	Ø Working channel (mm)	Unit
PAP1-D2-30-21-OL	70100146601	Micro-Tip, CWT	30	.021"	2,600	min. 2.8	2
PAP1-N2-20-21-OL	70100146696	B II, CWT, balloon enteroscopy	20	.021"	2,600	min. 2.8	2



PAP1-D2



PAP1-N2



Anatomical 3-D orientation

Based on systematic 11 o'clock orientation the AXS_tome sphincterotomes also follow the left frontal anatomy of the distal choledochus.

ERCP-CATHETER*



Product code	Material code	Characteristics	Length (mm)	Accepted guide wire	Ø Working channel (mm)	Unit
CAN1-B3-18-260-35	70100146580	Filiform, 1 lumen, radiopaque marking	2,600	.035"	2.0	2



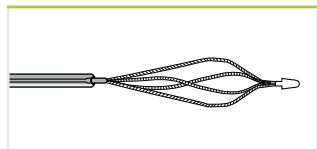
CAN1-B3

* Manufactured by FUJIFILM medwork GmbH, Germany.

STONE EXTRACTION BASKETS*



Product code	Material code	Characteristics	Ø Basket (mm)	Length (mm)	Ø Working channel (mm)	Unit
BAS1-C1-20-18-260	70100146573	Half twisted, balloon enteroscopy, not suitable for lithotripsy	20	2,600	2.0	2
BAS1-C2-25-23-260	70100146642	Half twisted, balloon enteroscopy, not suitable for lithotripsy	25	2,600	2.8	2



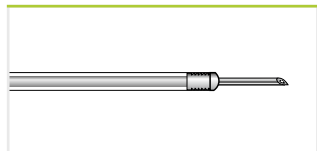
BAS1-C

MANTA INJECTION NEEDLES*



Manta ensures reliable retraction and extension of the needle, even in sharply angulated device positions, and prevents feared damage to the working channel. Maximum kink-resistance and single handed operation ease the application.

Product code	Material code	Characteristics	Ø Needle Needle length (mm)	Length (mm)	Ø Working channel (mm)	Unit
INJ1-A3-05-5-18-240	70100146666	Latching mechanism, distal needle guide, suitable with Histoacryl	0.5 (25 Gauge) 5	2,400	2.0	5
INJ1-A3-07-5-18-240	70100146657	Latching mechanism, distal needle guide, suitable with Histoacryl	0.7 (23 Gauge) 5	2,400	2.0	5



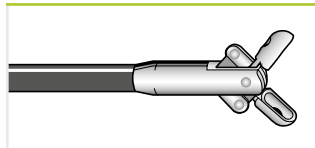
INJ1-A3



ENDO BITE² BIOPSY FORCEPS*



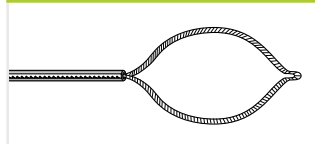
Product code	Material code	Characteristics	Ø Jaws (mm)	Length (mm)	Ø Working channel (mm)	Unit
BIO1-C4-18-260	70100146676	Oval jaws, coated	1.8	2,600	2.0	10



BIO1-C4-18-260

POLYPECTOMY SNARES*

Product code	Material code	Characteristics	Ø Snare (mm)	Length (mm)	Ø Working channel (mm)	Unit
POL1-B1-10-23-260-OL	70100147822	Convex	10	2,600	2.8	10
POL1-B1-15-23-260-OL	70100146685	Convex	15	2,600	2.8	10
POL1-B1-20-23-260-OL	70100147810	Convex	20	2,600	2.8	10
POL1-B1-30-23-260-OL	70100146712	Convex	30	2,600	2.8	10

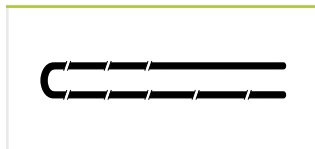


POL1-B1

GUIDE WIRE*



Product code	Material code	Characteristics	Diameter	Length (mm)	Unit
WIR1-F1-21-500	70100147850	Straight, Nitinol, coated	.021"	5,000	2



WIR1-F1

* Manufactured by FUJIFILM medwork GmbH, Germany.

ACCESSORIES



KOALA | FROG | JAZZ

Polyp Traps	103
Cleaning Brushes	104
Endoscope Protector	106
Biopsy Valves	107
Spraying Catheters	108
Valves	109
Miscellaneous	111

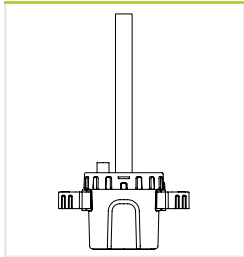


KOALA POLYP TRAPS*

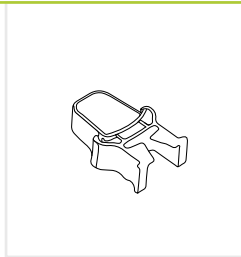


The two removable strainers of the koala polyp trap facilitate easy removal of tissue specimens and therefore protect against contamination with biomaterial. The suction function is limitless throughout the procedure.

Product code	Material code	Characteristics	Unit
TRP1-S2	70100147772	2 integrated strainers, white	25
TRP1-S4	70100149546	2 integrated strainers, white 2 additional strainers, grey	25



TRP1-S2 / S4



Strainer

Minimised contamination risk

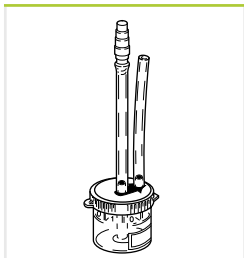
On account of the two chambers of the Koala it is no longer necessary to deposit a contaminated strainer outside the system. That reduces contamination with biomaterial, and hence the infection risk.

POLYP TRAPS**

THIRD PARTY PRODUCT



Product code	Material code	Characteristics	Unit
MIS1-POLYPTRAP	70100146707	4 chambers, connecting tubes to suction pump/endscope	10
MIS1-POLYPTRAP50	70100146556	4 chambers, connecting tubes to suction pump/endscope	50



MIS1-POLYPTRAP

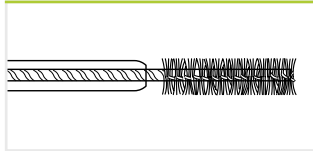
* Manufactured by FUJIFILM medwork GmbH, Germany.

** Manufactured by PPI Médical, France.

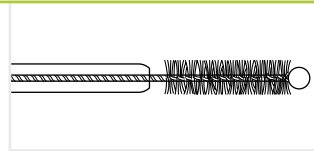
RACoon BRUSH CLEANING BRUSHES*



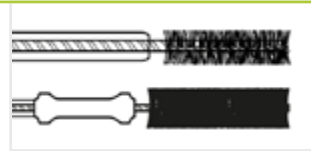
Product code	Material code	Characteristics	Ø Brush (mm)	Length (mm)	Ø Working channel (mm)	Unit
CLE1-G1-50-18-180	70100146651	For gastroscope, 1 brush	5	1,800	≥ 2.0	50
CLE1-G2-50-18-180	70100146644	For gastroscope, 2 brushes	5	1,800	≥ 2.0	50
CLE1-C1-50-18-230	70100146548	For colonoscope, 1 brush	5	2,300	≥ 2.0	50
CLE1-C1-65-18-230	70100146691	For colonoscope, 1 brush	6	2,300	≥ 2.0	50
CLE1-C2-50-18-230	70100146582	For colonoscope, 2 brushes	5	2,300	≥ 2.0	50
CLE1-C3-50-18-230	70100146595	For colonoscope, 3 brushes	5	2,300	≥ 2.0	50
CLE1-V2-012	70100147811	For endoscope valve intake	11/5	120	–	10
CLE1-V2-012-50	70100147826	For endoscope valve intake	11/5	120	–	50
CLE1-C4-18-230	70100146583	For colonoscope, 1 brush, distal protection ball	5	2,300	2.2–4.2	50
CLE1-C6-18-230	70100146706	For colonoscope, 2 brushes, distal protection ball	5	2,300	2.2–4.2	50
CLE1-D2-18-230	70100146692	For colonoscope and endoscope valve intake, 2 brushes, distal protection ball	10/5	2,300	2.2–4.2	50



CLE1- G1 / G2 / C1 / C2 / C3



CLE1-C4 / C6



CLE1-D2

CLEANING BRUSHES for Gastroscopes & Colonoscopes of 700 series

Product code	Material code	Where to use	Characteristics
WB7024FW	16518827	Working channel	Reusable
WB7025DC	16560832	Working channel	ⓧ
WB11003FW	16518841	Cylinder port	Reusable
WB11003DV	16560820	Cylinder port	ⓧ



WB7024FW

* Manufactured by FUJIFILM medwork GmbH, Germany.



CLEANING BRUSHES for Gastroscopes & Colonoscopes of 600 / 580 series

Product code	Material code	Where to use	Characteristics
WB4321FW2	15910078	Working channel	Reusable
WB7025DC	16560832	Working channel	ⓧ
WB11002FW2	15909902	Cylinder port	Reusable
WB11003DV	16560820	Cylinder port	ⓧ



WB4321FW2



WB7025DC



WB11003DV

CLEANING BRUSHES for Double-Balloon Endoscopes

Product code	Material code	Characteristics	Where to use	Suitable for
WB4324FW2	16406921	Reusable	Working channel	EN-580T/XP
WB7025DC	16560832	ⓧ	Working channel	EN-580T/XP
WB11002FW2	15909902	Reusable	Cylinder port	EN-580T/XP
WB11003DV	16560820	ⓧ	Cylinder port	EN-580T/XP
WB7024FW	16518827	Reusable	Working channel	EI-580BT
WB11003FW	16518841	Reusable	Cylinder port	EI-580BT
WB11003DV	16560820	ⓧ	Cylinder port	EI-580BT

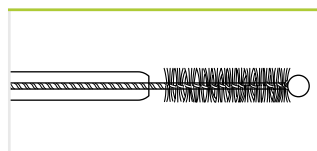


WB4324FW2

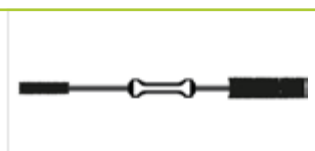
CLEANING BRUSHES* Colonoscope Kit



Product code	Material code	Characteristics	Ø Working channel (mm)	Unit
CLE1-KIT2-COLO	70100147806	Colonoscope kit consisting of: 1 CLE1-C6-18-230 For colonoscope, 2 brushes, distal protection ball 1 CLE1-V2-012 For endoscope valve intake	2.2–4.2	50



CLE1-C6



CLE1-V2

* Manufactured by FUJIFILM medwork GmbH, Germany.

SHEPHERD ENDOSCOPE PROTECTOR*



Product code	Material code	Characteristics	Ø Inner (mm)	Ø Outer (mm)	Length (mm)	Unit
SHP1-U1	70100147808	Endoscope protector in red, white, blue, green	4-10	37	140	50



SHP1-U1



FROG



PROTECTS AND SEALS TIGHT

Grips as tight as a frog's suction pad: the novel FROG Biopsy Valve seals especially tight, yet remains easy to open and close. Less friction allows quicker and less complicated insertion of instruments. Supplied in a practical, space saving dispenser with mounting option.



OPTIMISED TIGHTNESS

LESS FRICTION

EASY TO OPEN AND CLOSE

FROG BIOPSY VALVES*



Product code	Material code	Characteristics	Unit
VAL1-F1-100	70100146824	For Fujifilm and Olympus endoscopes	100
VAL1-P1-100	70100146810	For Pentax endoscopes	100

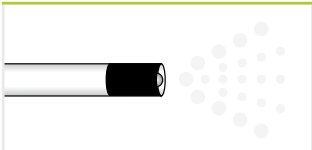


VAL1-F1 / P1

SPRAYING CATHETERS*



Product code	Material code	Characteristics	Length (mm)	Ø Working channel (mm)	Unit
SPE1-B6-18-120	70100146734	Spray catheter	1,200	2.0	10
SPE1-C6-18-220	70100146735	Spray catheter	2,200	2.0	10



SPE1-B6 / C6



JAZZ VALVE KIT



PLAYFULLY EASY

When speed is essential you want the complete endoscope valve kit at hand in an instant. One packaging unit contains air/water valve, suction valve and biopsy valve.

**PROTECTION AGAINST INFECTION
AND CROSS CONTAMINATION**

**NO RISKS INDUCED BY CLEANING,
DRYING AND STORAGE**

**FAST AND RELIABLE PATIENT
DOCUMENTATION DUE TO ADDITIONAL
PRODUCT LABEL**

PERFECT VALVE OPERATION EVERY TIME

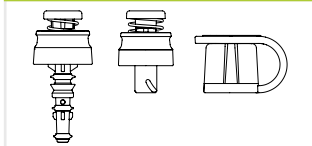
REDUCING TIME AND EFFORT



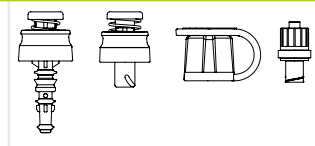
JAZZ ENDOSCOPE VALVE KIT* for 700 Series



Product code	Material code	Characteristics	Compatible endoscope	Unit
VAL1-G7-50	70100146737	Disposable endoscope valve kit, consisting of air/water valve, suction valve and biopsy valve FROG	Fujifilm 700 series with G7 grip	50
VAL1-G7-4-50	70100160979	Disposable endoscope valve kit, consisting of air/water valve, suction valve, biopsy valve FROG and Jet Connector	Fujifilm 700 series with G7 grip	50



VAL1-G7



VAL1-G7-4



Traceability

Fast and reliable patient documentation due to additional self-adhesive label with product data.

FORCEPS VALVES



Product code	Material code	Characteristics	Compatible endoscope	Unit
FV-001	16632659	Forceps valve	Fujifilm endoscopes with G5 / G7 grip	10
FV-002	16663165	Forceps valve	Fujifilm EUS endoscopes	20



FV-002

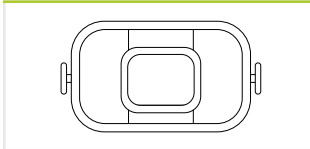
VALVES

Product code	Material code	Characteristics	Compatible endoscope	Unit
SB-605	16518762	Suction valve, reusable	Fujifilm endoscopes with G7 grip	2
AW-603	16518748	Air/Water valve, reusable	Fujifilm endoscopes with G7 grip	2
AW-604G	16578267	Gas/Water valve, reusable	Fujifilm endoscopes with G7 grip	1

* Manufactured by FUJIFILM medwork GmbH, Germany.

BITE BLOCKS *Perfect fit, maximum protection*

Product code	Material code	Characteristics	Ø Inner (mm)	Unit
BYT1-A3-20*	70100146578	Standard, white, with OEKO TEX® strap, latex-free	20	100
AN10018004**	70100147834	With strap, latex-free	13	25



BYT1-A3-20

PRODUCT CLIP*

Product code	Material code	Characteristics	Unit
MIS2-PRO-CLIP	70100147813	Reusable product clip for fixation and reprocessing of flexible accessories, autoclavable up to 134° C, opening width 0-10 mm	20



MIS2-Pro-Clip

* Manufactured by FUJIFILM medwork GmbH, Germany.

** Manufactured by PPI Médical, France.

MONITORS, PRINTERS & CARTS



EIZO | SONY | ITD



Monitors	113
Printers	114
Endoscopy Carts	115



Monitors for clear and natural images: Fujifilm's medical equipment incorporates advanced video technology. High-performance monitors used in conjunction with Fujifilm endoscopes reproduce sharp, genuine images.

EIZO MONITORS*

THIRD PARTY PRODUCT

Model	Description	Input signal	Output signal	Dimensions WxHxD (mm)	Weight (kg)
EIZO CURATOR (UHD) EX3242 32" LCD with 4K resolution	LED backlight with high brightness of max. 850 cd/m ² , high-resolution of 3840 x 2160 px (4K), optical bonding for reduced reflections, Smart Resolution Sparse Coding (S.R.S.C.) for high-definition images and enhanced sharpness	DisplayPort (HDCP 1.3) HDMI (HDCP 2.2/1.4) BNC (12G-SDI) BNC (3G-SDI) DVI-D (HDCP 1.4)	DisplayPort BNC (12G-SDI) DVI-D	760 x 463 x 92	13.2
EIZO CURATOR EX2721 27" Colour LCD 	LED backlight with high brightness of max. 900 cd/m ² , high-definition, full multi-modality	BNC (3G-SDI) DVI-D x 2 (HDCP 1.4) D-Sub 15 pin (mini) S-Video BNC (Composite)	BNC (3G-SDI) DVI-D, S-Video BNC (Composite)	660 x 400 x 87	8.5
EIZO Colour LCD 26" HD-Type LCD 	LED backlight with high brightness of max. 700 cd/m ² , high-definition, full multi-modality, displays up to three video sources simultaneously	BNC (3G-SDI) x 2 DVI-D x 2 (HDCP 1.4) D-Sub 15 pin (mini) BNC (RGB C-Sync or Component) S-Video BNC (Composite)	BNC (3G-SDI) x 2 (Composite) DVI-D BNC (RGB C-Sync or Component) S-Video BNC (Composite)	643 x 396 x 83	8.4



**EIZO CURATOR EX3242:
4K RESOLUTION IN
COMBINATION WITH
THE ELUXEO SYSTEM**

Monitors might not be available in all countries. Please check with your local distributor.
* Manufactured by EIZO Corporation, Japan.

SONY MONITORS*

THIRD PARTY PRODUCT

Model	Description	Input signal	Output signal	Dimensions WxHxD (mm)	Weight (kg)
Sony LMD-X3200MD 32"-4K-LCD	LED backlight with high brightness of max. 500 cd/m ² , high resolution of 3840 x 2160 px (4K)	HDMI x1 Display Port x1 3G-SDI x1 incl. 1x loop out 12G-SDI x1 incl. 1x loop out DVI-Dx1	SDI(BNC) x1 Clone Out	754 x 476 x 79	11.8
Sony LMD-2735MD 27"-Full HD-LCD	LED backlight with high brightness of max. 300 cd/m ² , high resolution of 1920 x 1080 pixels (Full HD)	HDMI x1 Display Port x 1 3G-SDI x1 incl. 1x loop out 12G-SDI x1 incl. 1x loop out DVI-Dx1	DVI-D x1	660 x 427 x 78	8.7
Sony LMD-2435MD 24"-Full HD-LCD	LED backlight with high brightness of max. 300 cd/m ² , high resolution of 1920 x 1080 pixels (Full HD)	HDMI x1 Display Port x 1 3G-SDI x1 incl. 1x loop out 12G-SDI x1 incl. 1x loop out DVI-Dx1	DVI-D x1	572 x 376 x 78	6.7

SONY PRINTERS*

THIRD PARTY PRODUCT

Model	Printing method	Interface	Resolution	Dimensions WxHxD (mm)	Weight (kg)
Sony UP-27MD	Dye sublimation thermal transfer	Hi-Speed USB (USB 2.0) x1	423 dpi	212 x 98 x 398	5.7
Sony UP-D25MD	Dye sublimation thermal transfer	SDI IN: BNC (x1) 3G/HD/SD-SDI SDI OUT: BNC (x1) 3G/HD/SD-SDI	423 dpi	212 x 98 x 398	5.7

Monitors might not be available in all countries. Please check with your local distributor.

* Manufactured by SONY Corporation, Japan.



Strong and reliable carts: The stable and flexible frames in different widths and heights empower enhanced procedural workflow. Used as single equipment tower, they ensure optimised space amount in surgical suites and offer maximum storage capacity.

ENDOSCOPY CARTS *

THIRD PARTY PRODUCT

Model	Material code	Dimensions (WxHxD mm)	Weight (kg)	Characteristics
ITD-03 EUS Iso Plus	70100128566	618 x 1500 x 624	approx. 85	EUS cart 2x endoscope hanger, 4x shelves 2,000 VA, isolating transformer with insulation monitoring function
ITD-03 Iso Plus	70100113037	540 x 1510 x 580	approx. 40	Uni-cart sonoprobe 3x shelves, 1x monitor stand 660 VA, isolating transformer
ITD-00 Plain Cart	70100113035	614 x 1277 x 625	approx. 70	Classic cart 1x endoscope hanger, 3x shelves



ITD-03 EUS Iso Plus



ITD-03 Iso Plus



COMPACT SINGLE TROLLEY
ACCOMODATES ALL DEVICES
DIFFERENT FRAMES

* Manufactured by ITD GmbH, Germany.

SERVICE



Service & Partnership	117
Training & Education	119
Product Recommendations	121



OUR COMMITMENT TO **SERVICE**



THINK GLOBALLY – ACT LOCALLY

Our service strategy aims for the highest customer satisfaction by offering a comprehensive service and being close to the customers. Eight service centers with the headquarters in Willich (Germany) are spread throughout Europe and employ highly qualified in-house technicians and experts in the field, allowing faster and better coverage for all customer needs.

Our service network includes:

Willich (GER)
Montigny, Toulouse (FRA)
Barcelona, Porto (IBERIA)
Milano (ITA)
Prague (CZE)
Istanbul (TUR)

Our full comprehensive service contract covers:

In-house repair service
All repair costs
Highly qualified field service engineers
Large variety of loan devices
Maintenance service and damage prevention
Support for reprocessing and on-site consulting

POWERED BY PARTNERSHIP

Fujifilm, a pioneer in the field of diagnostic imaging and information systems for medical institutions, operates in about 50 group companies in Europe and employs over 4,500 people engaged in R&D, manufacturing, sales and service. Dialogue and continuous partnership have a special significance for us and at our locations. Our products and technologies are constantly being developed in agreement with you to meet your specific needs. Your contact partners are available for you – no matter where you are. Living this kind of partnership inspires us to do all we can to make the world a little better.





OUR **TRAINING** OFFERS



ANYTIME – ANYWHERE

One of the biggest challenges in endoscopy is the provision of training and education for healthcare professionals. To benefit endoscopy services, enhanced onsite training opportunities and greater hands-on support from manufacturers is key.

Above all, there is a need for flexibility from the side of the manufacturers: Delivering training and education on site is of great advantage for the clinicians.

Having heard the challenges faced by endoscopists, Fujifilm has developed a series of training and education courses. The latest development is the mobile service unit EndoRunner.

MOBILE HUB *EndoRunner*

The 'EndoRunner' is a mobile hub containing all the latest innovations in endoscopy from Fujifilm. The EndoRunner travels to hospitals and conferences across Europe to offer training and education opportunities to clinicians. It includes around twenty different flexible endoscopes and more than fifty different therapeutic devices for all kinds of applications.

To request a visit from the EndoRunner, get in touch at endorunner_feg@fujifilm.com

Further information and details about the EndoRunner tour can be found at www.fujifilm-endorunner.com



ON-SITE TRAINING

Fujifilm offers hands-on trainings on a regular basis. If you are interested to join please contact for further information

endoscopy_eu@fujifilm.com





PRODUCT **RECOMMENDATIONS**

Recommended endoscopes for different gastrointestinal segments	Diseases	Special endoscopes to cope with these diseases	Special features of the special endoscope	Endoscopes for further diagnosis
OESOPHAGUS				
EG-760R EG-760Z EG-760CT EG-740N EI-740D/S EG-720R EG-600WR EG-580NW2 EG-580UR EG-580UT EG-530NP	Zenker diverticle	EG-760CT; EI-740D/S	WCH* 3.8; dual channel	
	Other oesophagus diverticle	EG-760CT; EI-740D/S	WCH 3.8; dual channel	
	Barrett oesophagus	EG-760CT; EG-760Z; EG-760R; EG-720R; EG-600WR	Magnification, high-quality images	EG-580UT/UR
	Oesophagitis	EG-760CT; EG-760Z; EG-760R; EG-720R; EG-600WR	Magnification, high-quality images	
	Mallory Weiss syndrome	EG-760CT	WCH 3.8	
	Oesophagus varices	2 endoscopes prepared		
	Tumors	EG-760CT; EG-760Z; EG-760R; EG-720R; EG-600WR	Magnification, high-quality images	EG-580UT/UR
	Squamous cell carcinoma	EG-760CT; EG-760Z; EG-760R; EG-720R; EG-600WR	Magnification, high-quality images	EG-580UT/UR
	Achalasia/POEM	EG-760R; EG-760CT	WCH 3.8	
	Stenosis	EG-740N; EG-580NW2; EG-530NP	Small outer diameter	EG-580UT/UR
GASTRO INTESTINAL				
EG-760R EG-760Z EG-760CT EG-740N EI-740D/S EG-720R EG-600WR EG-580NW2 EG-530NP	Gastritis	EG-760Z; EG-760R; EG-720R; EG-600WR	Magnification, high-quality images	
	Dyspepsia	EG-760Z; EG-760R; EG-720R; EG-600WR	Magnification, high-quality images	
	Ulcus ventriculi	EG-760Z; EG-760R; EG-720R; EG-600WR	Magnification, high-quality images	EG-580UT/UR
	Ulcus perforation	EG-760CT; EI-740D/S	WCH 3.8; dual channel	
	Ulcus carcinomas	EG-760Z; EG-760R; EG-720R; EG-600WR	Magnification, high-quality images	EG-580UT/UR
	Ulcus bleeding	EG-760CT; EI-740D/S	WCH 3.8; dual channel	
	Gastro carcinomas	EG-760Z; EG-760R; EG-720R; EG-600WR	Magnification, high-quality images	EG-580UT/UR
	Precancerosis	EG-760Z; EG-760R; EG-720R; EG-600WR	Magnification, high-quality images	EG-580UT/UR
	Stomach exit stenosis	EG-740N; EG-580NW2; EG-530NP	Small outer diameter	
	Vessel abberation	EI-740D/S	WCH 3.8; dual channel	EG-580UT/UR
	Fundus varices	EG-760R; EG-760CT	WCH 3.8	
DUODENUM				
EG-760R EG-760Z EG-760CT EG-740N EI-740D/S EG-720R EG-600WR EI-580BT EG-580UT/UR EG-530NP	Duodenitis	EG-760Z; EG-760R; EG-720R; EG-600WR; (EI-580BT)	Magnification, high-quality images, stabilises position	
	Duodenal ulcer	EG-760Z; EG-760R; EG-720R; EG-600WR; (EI-580BT)	Magnification, high-quality images, stabilises position	
	Coeliac disease	EG-760Z; EG-760R; EG-720R; EG-600WR; (EI-580BT)	Magnification, high-quality images, stabilises position	
	Bleeding	EG-760CT; (EI-580BT); EI-740D/S	WCH 3.2; WCH 3.8; dual channel, stabilises position	
	Tumors	EG-760Z; EG-760R; EG-720R; EG-760CT; EG-600WR; (EI-580BT)	Magnification, high-quality images, stabilises position	EG-580UT/UR

* Working Channel

Recommended endoscopes for different gastrointestinal segments	Diseases	Special endoscopes to cope with these diseases	Special features of the special endoscope	Endoscopes for further diagnosis
--	----------	--	---	----------------------------------

SMALL INTESTINE

EN-580T EN-580XP	Tumors of the small intestine	EN-580T	Bigger working channel	
	Erosive and ulcerated defects	EN-580XP	Small outer diameter	
	Bleeding	EN-580T	Bigger working channel	
	Vessel anomaly	EN-580T	Bigger working channel	

BILIARY TRACT AND PANCREAS

EN-580T EN-580XP EI-580BT EG-580UT/UR ED-580XT	Bile duct stones	EI-580BT; ED-580XT	Stabilises position	EG-580UT/UR
	Cholelithiasis	EI-580BT; ED-580XT	Stabilises position	
	Postoperative alterations	EI-580BT; ED-580XT	Stabilises position	
	Malignant stenosis	EI-580BT; ED-580XT	Stabilises position	EG-580UT/UR
	Tumors of the papilla	EG-760Z; EG-760R; EG-720R; EG-600WR; EI-580BT; ED-580XT	Magnification, high-quality images, stabilises position	
	Environmental tumors	EG-760Z; EG-760R; EG-720R; EG-600WR; EI-580BT	Magnification, high-quality images, stabilises position	EG-580UT/UR
	Infections	EG-760Z; EG-760R; EG-720R; EG-600WR; EI-580BT	Magnification, high-quality images, stabilises position	

COLON

EC-760ZP-VM/VL EC-760R-VM/VI/VL EC-760P-VM/VL EC-740TM/TL EC-720RM/RI/RL EC-600WM/WI/WL EN-580T EN-580XP EG-580UT/UR EC-530DL	Colorectal polyps	EC-760ZP-VM/VL; EC-760R-VM/VI/VL; EC-760P-VM/VL; EC-740TM/TL; EC-720RM/RI/RL; G-EYE 760R; EC-600WM/WI/WL	Magnification, high-quality images, Smart Bend	
	Flat adenomas	EC-760ZP-VM/VL; EC-760P-VM/VL; G-EYE 760R	Magnification, high-quality images	
	Malignant tumors	EC-760ZP-VM/VL; EC-760P-VM/VL; G-EYE 760R	Magnification, high-quality images	EG-580UT/UR
	Intestinal inflammation	EC-760ZP-VM/VL; EC-760R-VM/VI/VL; EC-760P-VM/VL; EC-720RM/RI/RL; G-EYE 760R; EC-600WM/WI/WL	Magnification, high-quality images	
	Irritable bowel syndrome	EC-760ZP-VM/VL; EC-760R-VM/VI/VL; EC-760P-VM/VL; EC-720RM/RI/RL; G-EYE 760R; EC-600WM/WI/WL	Magnification, high-quality images	
	Ulcerative colitis	EC-760ZP-VM/VL; EC-760R-VM/VI/VL; EC-760P-VM/VL; EC-720RM/RI/RL; G-EYE 760R; EC-600WM/WI/WL	Magnification, high-quality images	
	Crohn's disease	EC-760ZP-VM/VL; EC-760R-VM/VI/VL; EC-760P-VM/VL; EC-720RM/RI/RL; G-EYE 760R; EC-600WM/WI/WL	Magnification, high-quality images	
	Hemorrhoids	2 endoscopes prepared		
	Anal diseases	EC-760P-VM/VL; EC-740TM/TL; G-EYE 760R	Smart Bend	

All endoscopes are compatible with the video processors ELUXEO 7000 system and ELUXEO Lite EP-6000.
All endoscopic ultrasonography systems are compatible with processor SU1.

This overview contains selected information and recommendations and does not purport to be complete.



FUJIFILM Healthcare Europe GmbH

Balcke-Dürr-Allee 6 | 40882 Ratingen, Germany
+49 2102 5364-0 | endoscopy_eu@fujifilm.com
www.fujifilm-endoscopy.com

Specifications are subject to change without notice. The name FUJIFILM and the FUJIFILM logo are trademarks of FUJIFILM Corporation. All other trademarks shown are trademarks of their respective owners. All rights reserved. SAP 70100153958. 03/2024.